



# MISSION ABBEY

ALL SAINTS ANGLICAN CHURCH

Master Site Plan & Phase One



## MISSION ABBEY VISION

To say we hope to build a “Mission Abbey” is to say that our intention is to develop our property as an outgrowth of our mission **“to share in the life of God for the life of the world.”**

- “Abbey” speaks to a community devoted to the contemplative tradition, spiritual formation, immersion in Scripture, and rhythms of rest, worship, and prayer—thus, “sharing in the life of God.”
- “Mission” speaks to a community devoted to action, equipping one another for ministry, and working together to make an impact on the world around them—thus, “for the life of the world.”

The more specific elements of our Mission Abbey vision spring from those personality traits of All Saints that we as a church continue to nurture.

### HEALING HOSPITALITY

As All Saints has been a place of **Healing Hospitality** for so many, so should our buildings and spaces continue to reflect that characteristic. We hope our Mission Abbey will be a retreat and refuge from the world, a sacred setting affording the opportunity to encounter God through meditation, silence, and beauty. Therefore, we desire more of a “campus feel”: we imagine an accessible, safe, and inviting environment, and we want to be attentive to how spaces connect with and flow into each other. Landscaping and the proper placement of parking will be important, as well as clear entry points and signage so that everyone feels welcome.

In the spirit of hospitality, we also want our facilities to be designed for shared use. We hope to make many of our spaces (meeting rooms, office space, parish hall, kitchen, grounds) available to local ministries for work that contributes to kingdom expansion, and to do so on a regular basis so that our campus is a lively place of activity for the community, seven days a week.

### THE CHURCH AS FAMILY

As people experience the healing hospitality of All Saints, they also discover **The Church as Family**, a multi-generational parish that fosters close relationships across generational lines. Therefore, our hope is to avoid isolating certain age groups from the rest of the church, while acknowledging a few key exceptions like nursery care and Children’s Church. Other aspects to consider are adjacent play and adult spaces, family-friendly amenities like nursing rooms and changing stations, safe nursery facilities easily accessible to the nave, large gathering spaces both inside and out, a kitchen to prepare “family meals,” and a garden to grow flowers and produce.

We also hope to worship in one service on Sundays to strengthen the family feel of our church, which means a new nave will need to seat more than our growing average Sunday attendance, but less than would frustrate family-like relationships. We also recognize that healthy families typically grow, and so we want to be ready and eager to manage that growth, not by building bigger buildings, but by sending people out to start new families, that is, to plant new churches, which is why we are currently pursuing church planting in the hopes that our Mission Abbey will be a hub of church planting for West Tennessee.

## SPIRITUAL FORMATION IN THE ANGLICAN WAY

The family of All Saints is part of the Anglican tradition, which means we are committed to **Spiritual Formation in the Anglican Way**. The heartbeat of our parish family is the regular worship of God in Word and Sacrament, so the construction, layout, and design of our nave will be critical, reflecting the formative role that architecture, church tradition, and beauty play in our spiritual lives. We also want the nave to communicate peace, reverence, and sacramental presence without losing the hospitable and family-friendly nature of our gathered worship experience.

Since the communal practices of daily prayer, solitude and silence, meditation, and Scripture are imbedded in Anglicanism, we also hope that they would influence the development of the property in other ways. We imagine spaces for contemplation, such as a prayer labyrinth, an outdoor Stations of the Cross, gardens, pavilions and patios, and even a small prayer chapel that is always open to the Parish as well as to the public.

## A HEART FOR SERVICE

As a community that exists for the life of the world, we are grateful that All Saints has always had **A Heart for Service**. As mentioned above, we want our facilities to serve other ministries, to be a community center of sorts. Currently, our existing building is used for adoption training (ASAP), staff meetings for other organizations, play therapy for local social workers, AA groups, and various community forums. Our hope is to increase these types of partnerships.

Furthermore, we hope our Mission Abbey will bless our Parish and community through what we produce from our land. We do not want to be mere consumers or even mere inhabitants, but co-creators with God as he intended from the beginning. While we recognize that our labor in the world as individuals is a key part of being faithful to this calling, we also hope there will be a degree of openness and flexibility with our space and facilities to accommodate various creative endeavors that might arise—growing produce in our garden, flowers on our grounds, making soaps, creating prayer beads, etc.

## FINANCIALLY GENEROUS AND RESPONSIBLE

All Saints has a history of being **Financially Generous and Responsible**, which is the same posture we aim to have throughout the development of our property. This means that we will develop our campus over time and in multiple phases as the Spirit leads. Each phase will consist of a capital campaign that secures pledges from our people and only takes on a manageable amount of debt, something that would hinder neither our regular ministries nor our annual practice of giving 10% of our pledged budget to outreach ministries and 10% to our diocese. We also plan to continue to designate monies to our church planting efforts even as we develop our property.



This vision for how All Saints Anglican Church hopes to develop its current property is both rooted in our Mission & Personality as well as adapted from ancient elements of monastic care and community that embrace the fullness of humanity: mind, body, and soul. It is a vision that will span many years, but important initial steps will occur in the months to come. The final character and details of each component will depend on how we respond together to the leading of the Holy Spirit as we seek to follow Jesus.

## THE MASTER SITE PLAN

*from Rardin & Carroll Architects*

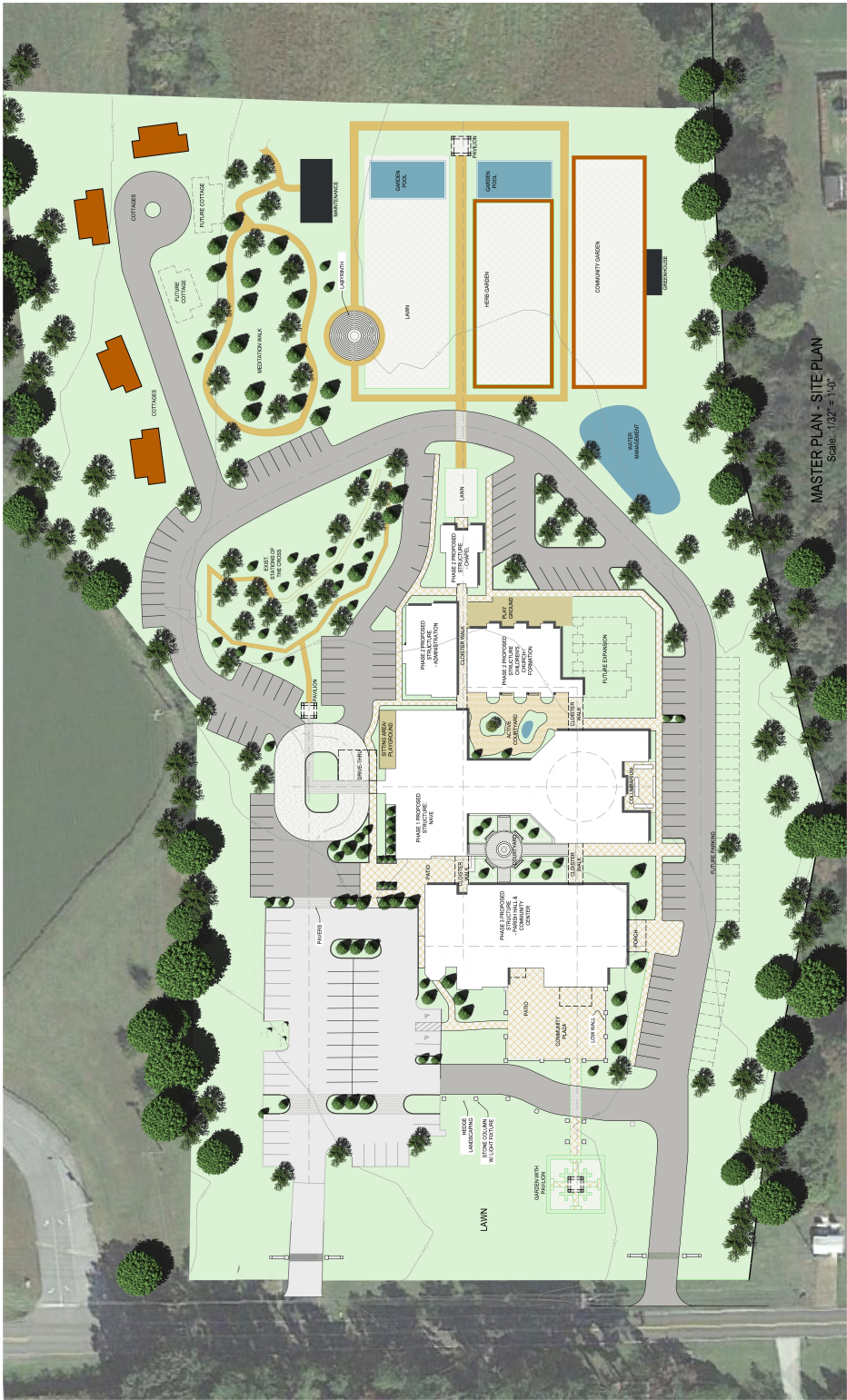
The Site Design Concept is formatted after the daily functional routines and ministries as a model for Mission Abbey vision. The layering of the site for ministry, function, and security adheres to the spiritual model of a community-ministries-based church.

The outer layer of development represents the outreach and evangelistic ministry of the church to address the Great Commission. The front garden, with its center pavilion and Jerusalem Cross shaped plaza, provides a spiritual context, both informative and representative of the spiritual foundation of the Mission Abbey, and as a defining element for scale and arrival on the campus.

The arrival through front gateways and low wall represents a transition to a more sacred space from the public road. The large front parking area will be developed as a vehicle courtyard with low landscaping and definition as a community space. The community building with the Parish Hall, meeting rooms, food service, and outdoor meeting venues, provides spaces for community interaction. The colonnaded front walkway into the community building is anchored by an octagonal shaped prayer room. The prayer room acts as both a focal point and turning element into the site from the road.

The second layer of the site speaks to the historic spiritual context of the Church. Arrival at the second parking court is on axis from the street to a second pavilion, which acts as a focal point and marks the entrance to the Stations of the Cross. The porte-cochere and front porch provide visual direction to the front entrance and Narthex, which is on an East-West axis to the main altar. The Nave, Transepts, and Chancel form a cross. The Chancel and Altar are located on the East end facing Jerusalem and the rising sun. The crossing of the Nave and Transepts forms a center line axis for both the Nave, Narthex, and Chancel, and Southward for the center line of the Transept, Parish Hall, and front pavilion. The crossing location emphasizes the importance of communion.

The third layer of the site, while having a public aspect, is more internal, not in an access sense, but in a formative and contemplative manner. Elements of the rear site development are arranged to provide different levels of spiritual and environmental awareness. The rear of the Chapel acts as a focal point for the contemplative spaces. Administrative and Educational Spaces, which require more sound control and security, are in this layer of the site. Future housing and garden development acts as a buffer to the neighboring homes. A third pavilion serves as a counterpoint to the Chapel and a focal point at the North end of the gardens and walking paths. The patio that is rear of the Chapel provides for an outdoor venue as well as an overlook of contemplative and community garden spaces.



MASTER PLAN - SITE PLAN  
Scale: 1/32" = 1'-0"





## PHASE ONE: THE NAVE

For several years now, the increasing need for space has become more and more evident. The strain of our current building and the possibilities of the property on which it rests have become topics of conversation. The need to build a building has seemed an easy and obvious next step.

But in guarding our church's unity and mission, we have insisted that we move in prayerful intentionality rather than speedy practicality. While we are running out of space, we remember that we are the church, with or without a building.

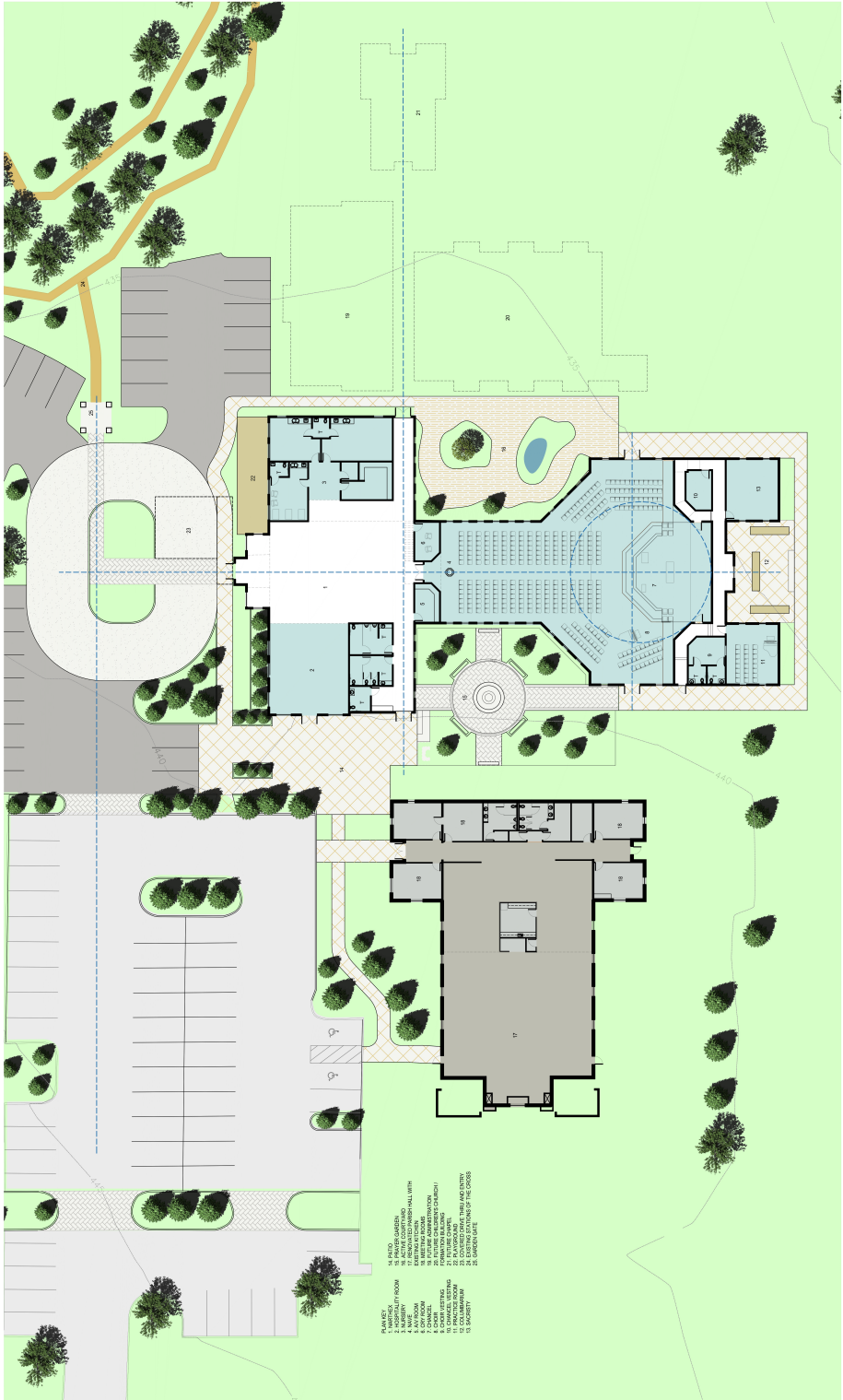
This process has been slow, but formative. At every turn, whether in Vestry meetings or Parish Forums, there has been a remarkable consensus that the time is right to bring these two realities together. How do we increase our actual space and develop our property, not so we can become something we have not already been, but so we can grow into more of what God has already created us to be? The Mission Abbey has become a picture of what our Mission & Personality looks like if it was covered in grass and stone and wood.

The first step toward the development of our Mission Abbey will be to construct its central piece: the Nave. Both in symbol and in reality, the focus of Phase 1 addresses our immediate needs for space and reminds us in the structure and layout of our campus of our core mission as a church. Entrance into this structure directs our collective heart and gaze forward to the altar, reminding us once again that we are first and foremost a Eucharistic community. All healing, all family life, all formation, all service and generosity flow from this reality. As such, it is the central element of the property.

The Nave will include a narthex, a hospitality area, a nursery, bathrooms, the worship area, and behind it a sacristy and vesting rooms. Currently, the Nave is designed to be a little over 15,000 square feet, holding around 350 people, with the possibility of one day finishing out a balcony that would seat an additional 50 people. The projected cost of the project is in the \$3 million range, which includes site development, two new parking lots, and all the furnishings and equipment.

Naturally, as we share in God's life around this altar, as we build the church, we change the community around us. Once the Nave is complete, our current building will become a place for us to better accommodate current ministry and service efforts as well as grow our capacity to do new ones that are forming even now. We gain the room we have not had to share meals together as well as the ability to offer more space to other ministries and organizations.

The Mission Abbey forces us to remember that corporate worship is not only during Holy Eucharist, but in all our kingdom efforts. This additional space in effect becomes a laboratory for current and new ministries, the results of which will influence how we realize the future of the Mission Abbey vision.



- PLAN KEY
- 01 PARKING GARAGE
  - 02 SECURITY ROOM
  - 03 MAIL ROOM
  - 04 MAIL ROOM
  - 05 OFFICE
  - 06 OFFICE
  - 07 OFFICE
  - 08 OFFICE
  - 09 OFFICE
  - 10 OFFICE
  - 11 OFFICE
  - 12 OFFICE
  - 13 OFFICE
  - 14 OFFICE
  - 15 OFFICE
  - 16 OFFICE
  - 17 OFFICE
  - 18 OFFICE
  - 19 OFFICE
  - 20 OFFICE
  - 21 OFFICE
  - 22 OFFICE
  - 23 OFFICE
  - 24 OFFICE
  - 25 OFFICE

