



Beacon of Hope

New Building – Move In Information

Our new building address is

850 Terrace Court, St. Paul, MN

Our website address is

beaconforthecity.org



Beacon of Hope

Agenda

- Locations & Layout
- Safety
- Security
- General Use Information
- Building Ministry Highlights
- Questions



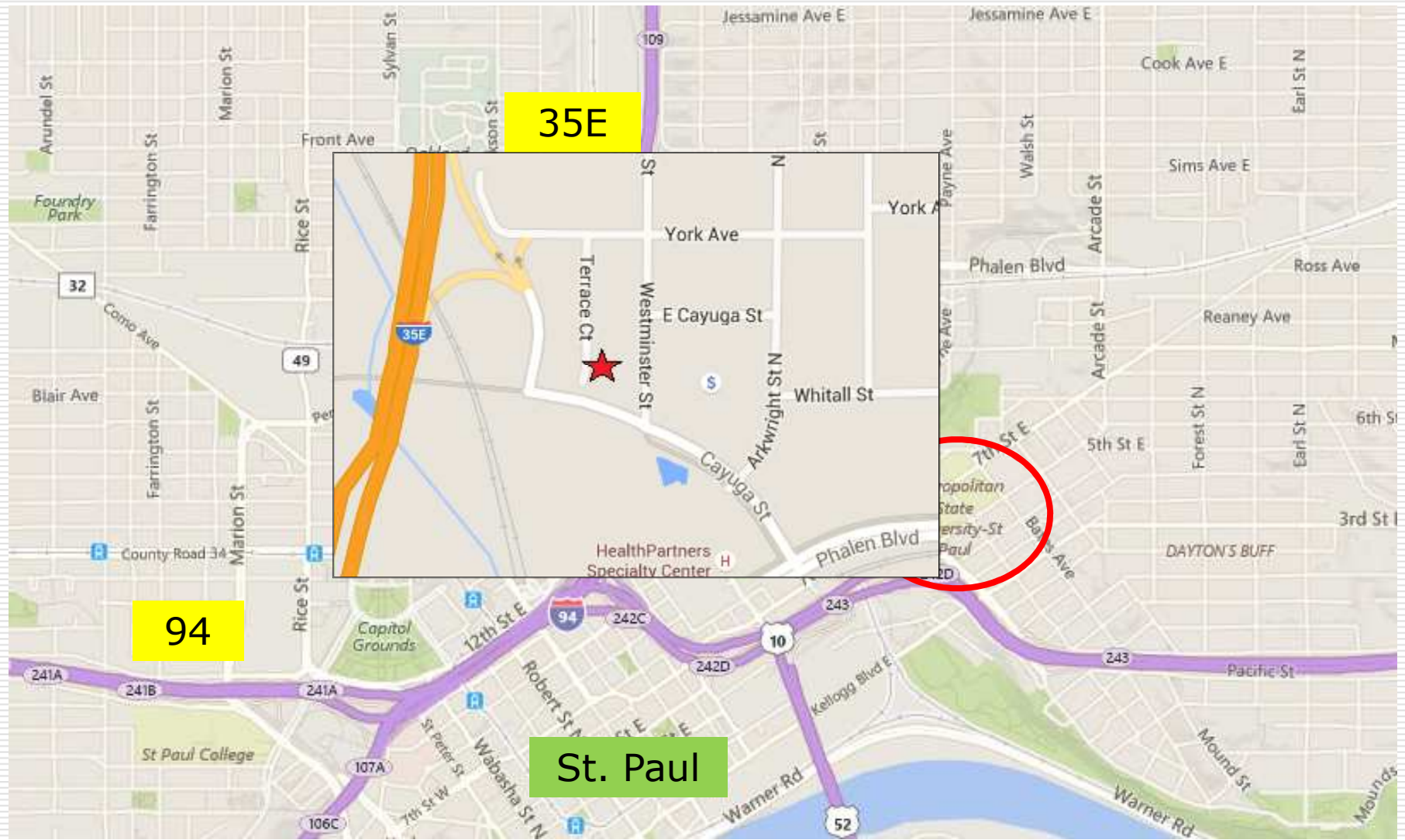
Beacon of Hope

Agenda

- Locations & Layout
- Safety
- Security
- General Use Information
- Building Ministry Highlights
- Questions



Locations & Layouts

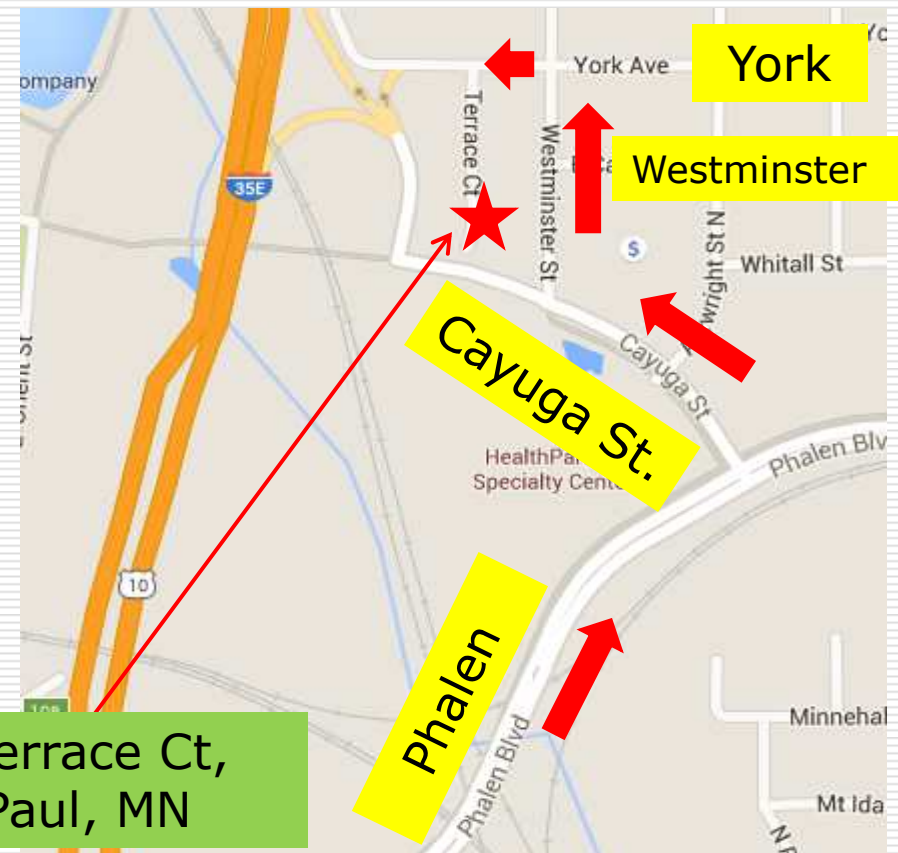




Locations & L

Going South on 35E

To	University	(East)
To	Olive	(North)
To	Phalen	(East)
To	Cayuga	(West)
To	Westminster	(North)
To	York	(West)
To	Terrace	(South)



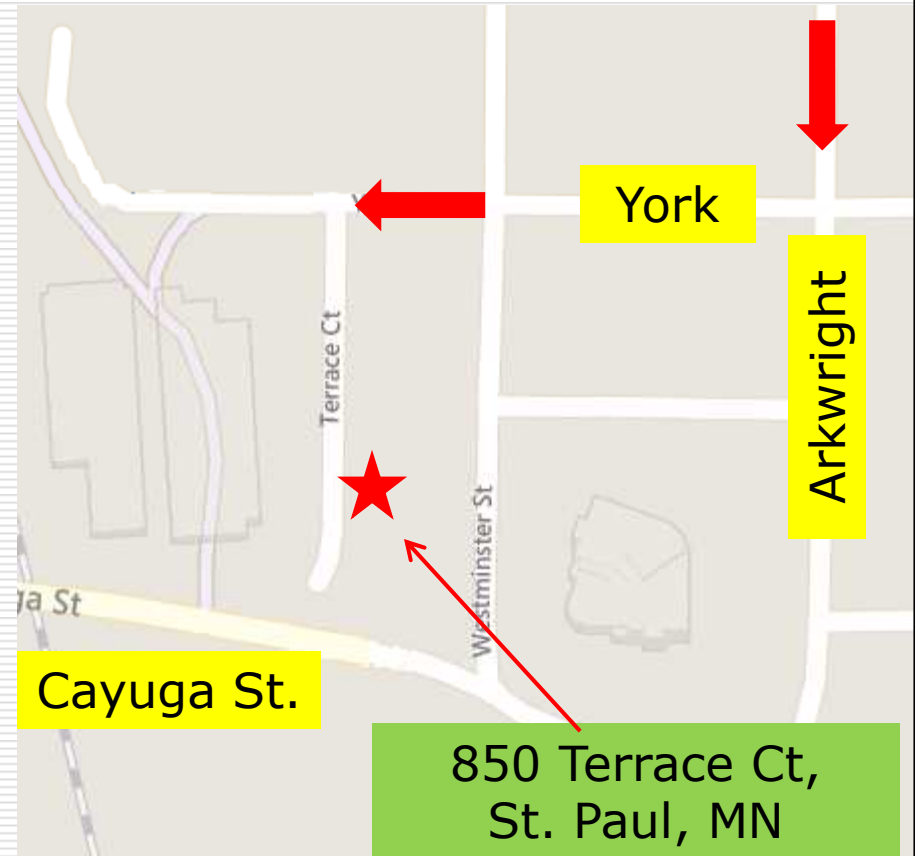


Locations & Layouts



Going South on 35E

To	M aryland	(East)
To	A rkwright	(South)
To	Y ork	(West)
To	T errace Ct	(South)





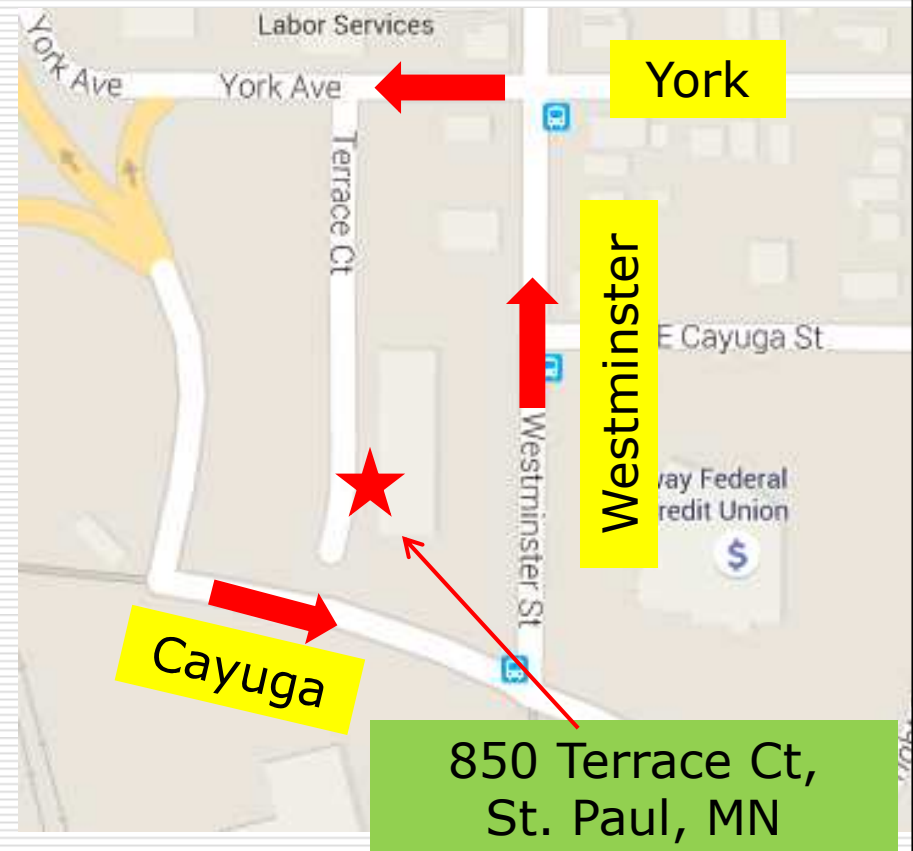
Locations & Layouts

North on
35E to
Cayuga St



Going North on 35E

To	Cayuga	(East)
To	Westminster	(North)
To	York	(West)
To	Terrace Ct	(South)





Locations & Layouts

I-35E Cayuga Improvement Project

Timeframes are approximate and subject to change

LEGEND

- Completed
- Complete spring/
summer 2016



850 Terrace Ct,
St. Paul, MN

Data from MN DOT Website





Locations & Layouts





Locations & Layouts



No Parking



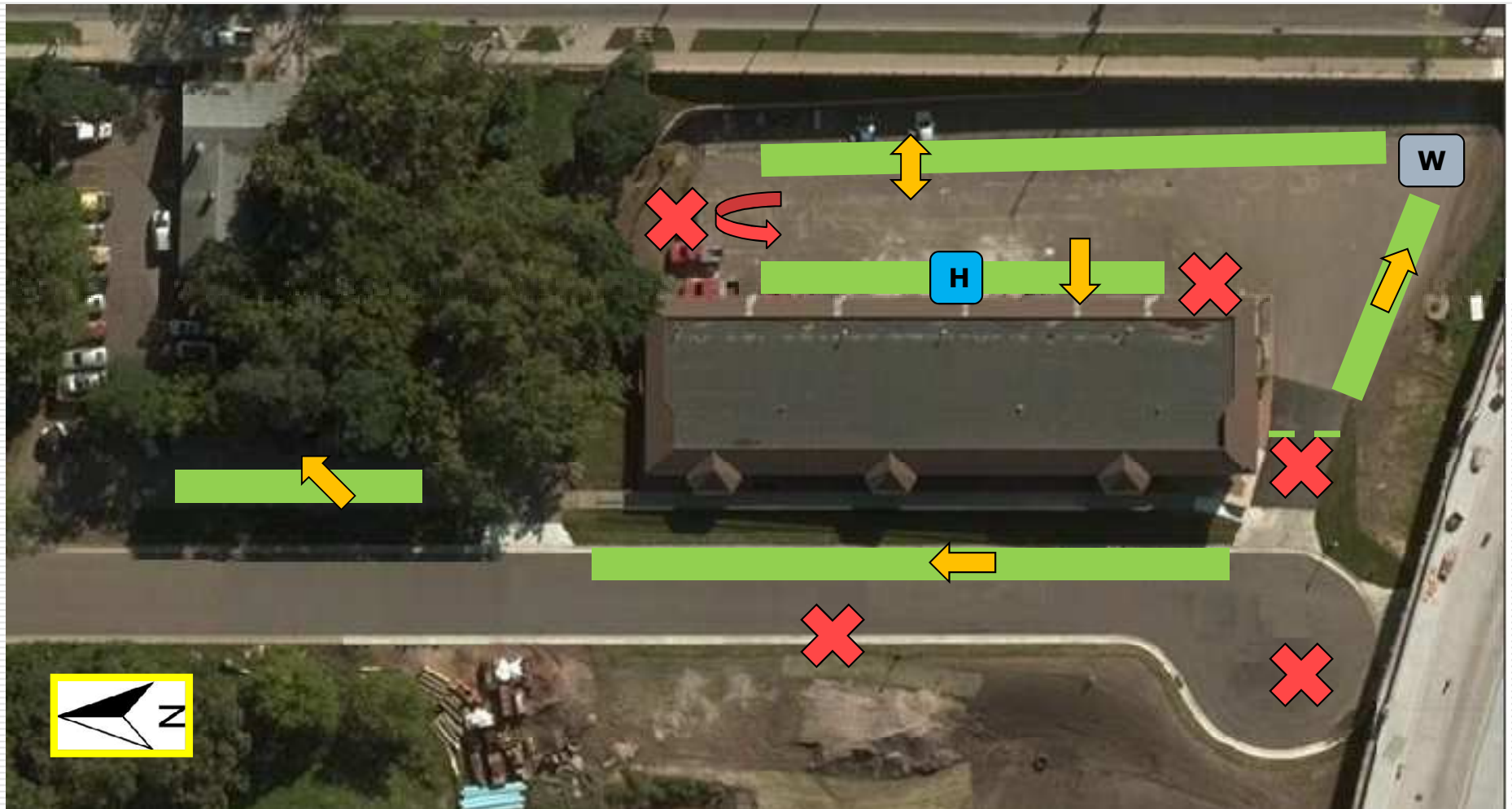
Turn Around



Car Parking



Park at these locations





Locations & Layouts

850



FRONT OF THE BUILDING



Entrance
to a
Tenant's
Space

Pre-K & 1st,
2nd thru 5th,
Junior,
& Sojourners

Agapetos &
Joint Heirs

**Fellowship Group
Upstairs Entrances**





Locations & Layouts

BACK OF THE BUILDING



Entrance
to a
Tenant's
Space



Main
Entrance





Locations & Layouts



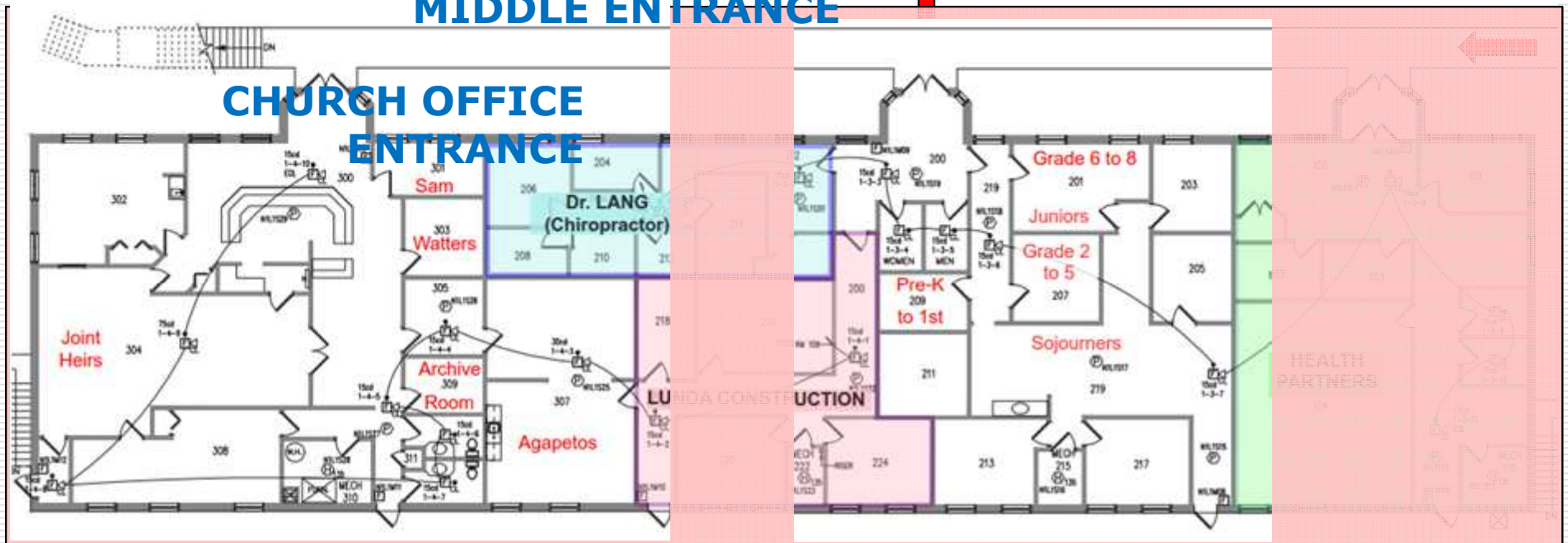


Locations & Layouts

UPPER LEVEL

MIDDLE ENTRANCE

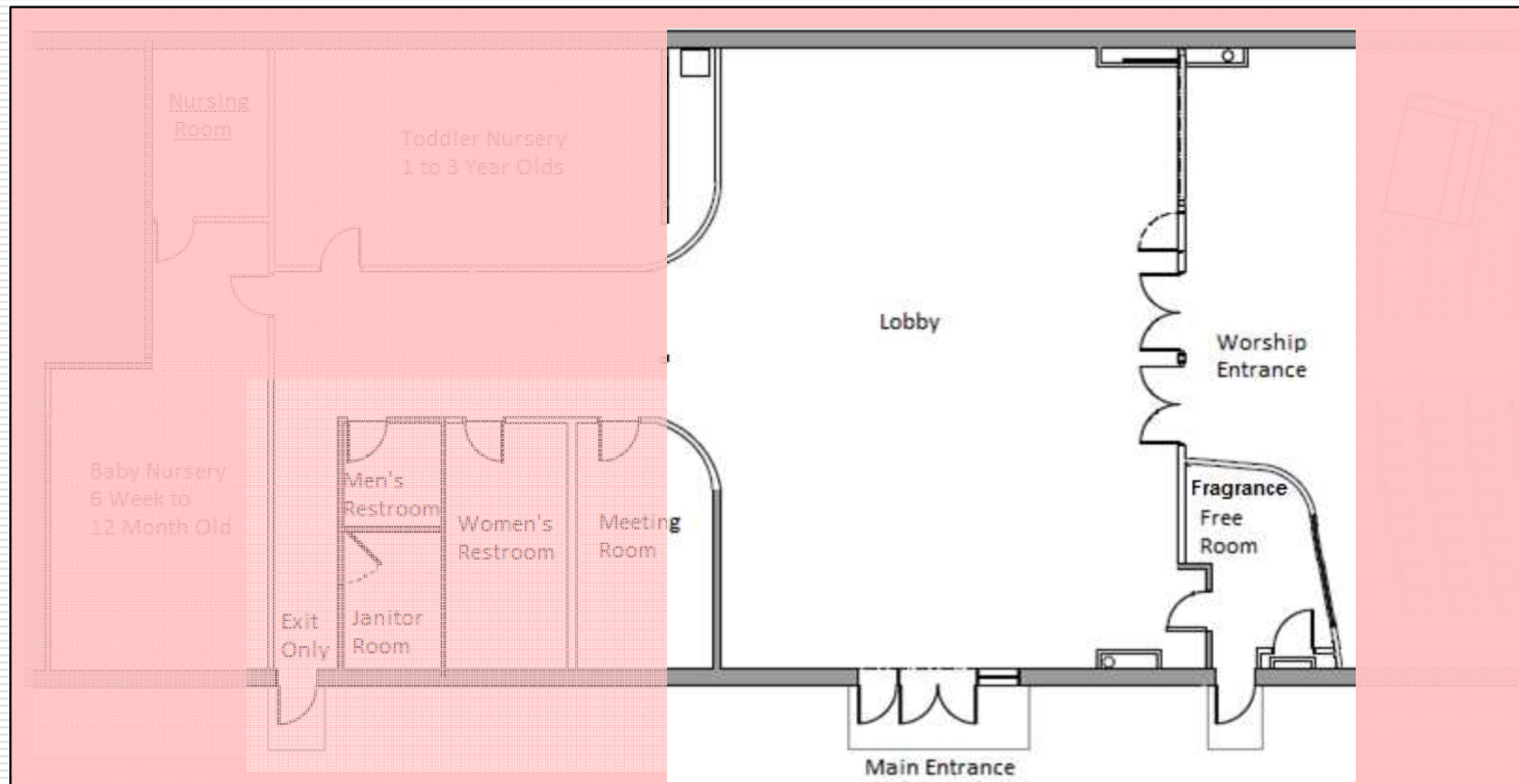
CHURCH OFFICE ENTRANCE





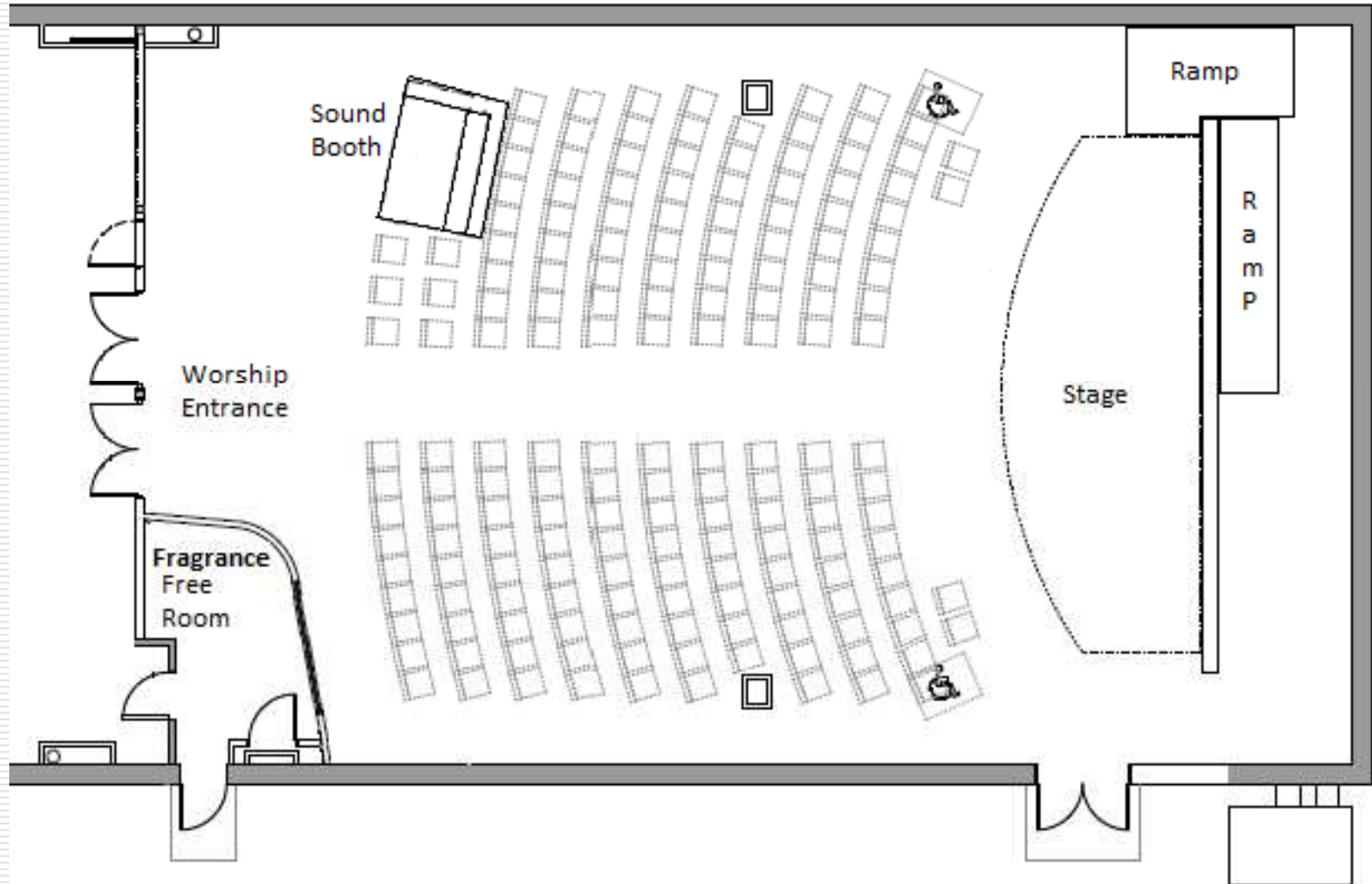
Locations & Layouts

LOWER LEVEL





Locations & Layouts





Beacon of Hope

Agenda

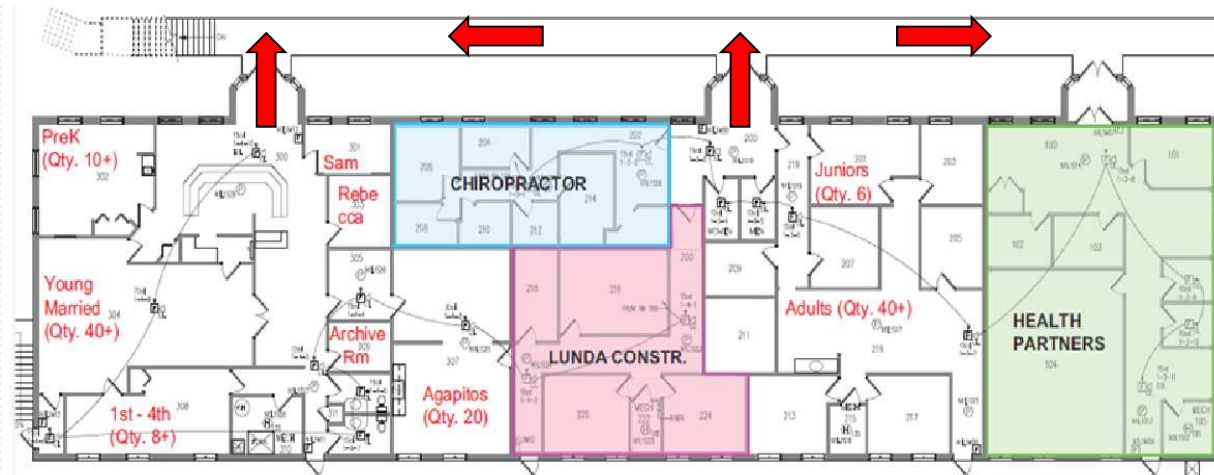
- Locations & Layout
- **Safety**
- Security
- General Use Information
- Building Ministry Highlights
- Questions



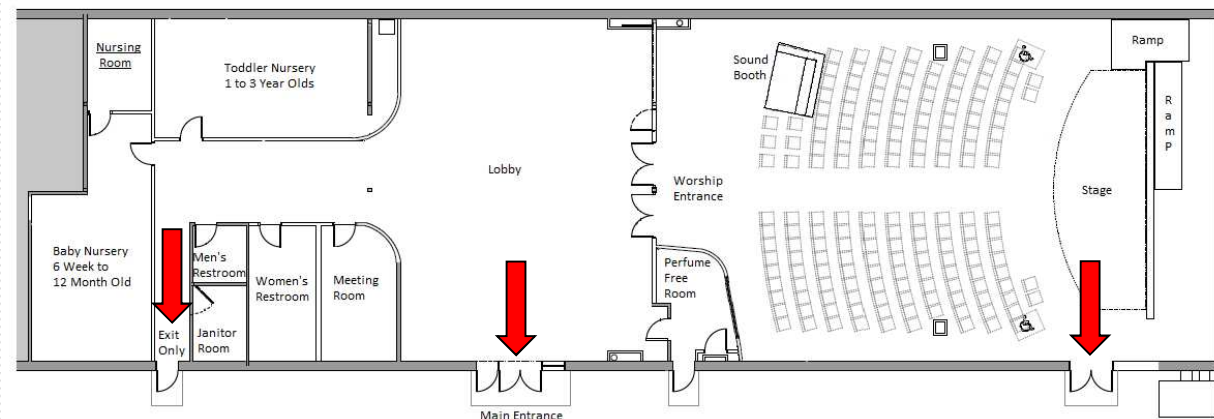
Safety

In case of fire, building exits are...

UPPER LEVEL



LOWER LEVEL





Safety

In case of fire, meeting locations are...





Safety

In case of Fire....

- **Call 911 immediately**
- **Exit in an orderly manner**
- **Assist visitors and people who need help**
- **Deacons will take the lead until Fire Department is on site**
- **Establish and exercise a fire exit plan and meeting location with your family**



Beacon of Hope

Agenda

- Locations & Layout
- Safety
- Security
- General Use Information
- Building Ministry Highlights
- Questions



Security

Outside

- Be attentive to your surroundings
- Alone and Uncomfortable in the parking lot ?
Drive away
- Park as close as possible to the entrance
- Remove distractions when walking outside
- If you witness a concern, call 911 and give a good description
- Don't confront, call 911
- If you choose to confront, do it safely
- During Sunday worship service parking lot is periodically patrolled



Security

Outside

- Parking lot is lit at night
- Softest targets are the most attractive targets
- Evening events, use the assistance of men
- Lock vehicles & empty them of valuables
- Hidden valuables in vehicles, do not stop criminals
- Don't give money or loan your phone
- Watch for tag teaming
- Use the help of Deacons to resolve concerns



Security

Inside

- Be friendly while being cautious
- Welcome visitors and introduce them to the Leadership
- Be attentive, thoughtful, and look out for your brother and sister
- If you witness a concern, call 911 and give a good description
- Don't confront, call 911
- If you choose to confront, do it safely
- Last one shuts the lights off and secures the doors



Security

Remember.....

- God has given us this property to use for his glory
- We must be wise yet kind

Two verses to ponder on....

- "For God has not given us a spirit of fear, but of power and of love and of a sound mind."

2 Timothy 1:7

- "Have I not commanded you? Be strong and courageous. Do not be terrified; do not be discouraged, for the Lord your God will be with you wherever you go." **Joshua 1:9**



Beacon of Hope

Agenda

- Locations & Layout
- Safety
- Security
- General Use Information
- Building Ministry Highlights
- Questions



General Use Information

- Welcome visitors and friends
- Parents watch for the safety of your kids
- Respect the neighbors property
- Respect the tenant space
- Do not use the east deck
- Be patient and share your talents
- Pray for and look out for one another
- Pray as we learn how to run a building
- Pray for wisdom for the Leadership



Beacon of Hope

Agenda

- Locations & Layout
- Safety
- Security
- General Use Information
- **Building Ministry Highlights**
- Questions



Building Ministry Highlights

Security

Fellowship Groups

Greeters

Ushers

Communion

Nursery

Worship

Audio/Video

Janitorial

**Repair &
Maintenance**

Tenant Relations

**Fragrance-Free
Room**



Building Ministry Highlights

Security

- Discussed the Do's and Dont's
- Please use your Name Tags
- If you want to join the team or support the ministry, please contact the main contact.
- Security Main Contact: **Sean Staum**
- Parking Lot Contact: **Larry Pitkanen**



Building Ministry Highlights

Fellowship Groups

- On Sundays meet at 9 AM till 10 AM
- Classrooms located on upper level
- Main Contact: **Your Group Leader** (Teacher) or **Cha Lo**



Building Ministry Highlights

Greeters

- Same number of people as Metro
- Expected to be at the main entrance inside the building
- Scheduled by Len Parenteau through planning center
- Main Contact: **Len Parenteau**



Building Ministry Highlights

Usher

- Increased staffing
 - ✓ Three on regular Sundays
 - ✓ Six on communion Sundays
- Will tend to the Welcome Table and new name tags
- Will provide communion to Fragrance-Free Room attendees and nursery attendants
- Scheduled by Grant Skoog through Planning Center
- Main Contact: **Grant Skoog**



Building Ministry Highlights

Communion

- New communion table moved into position on communion Sundays. Table located on floor in front of the stage at center
- Fragrance-Free Room users and nursery attendants all served by Ushers
- Worship Team needs a table/stool for the elements on stage
- Main Contact: **The Andersons**



Building Ministry Highlights

Nursery

- Separate rooms for babies and toddlers.
- Two Shifts for worship service
 - ✓ Three people from 8:30 am till 10:15 am for Fellowship Group hour
 - ✓ Five people from 10 am for worship service
- Being a new building, before the nursery service is available and after worship service, request parents to watch their own kids for their kids safety, protection, and security



Building Ministry Highlights

Nursery

- There will be new security procedures in place for the nursery to protect our kids, please come to the parent meeting for more details.
- Plan on attending the parent meeting on **Sunday, April 3rd at 9:55 AM at Metro** for 20 minutes in the Joint Heirs Room (basement). Child care will be provided.
- Scheduled by Brigetta Somerville through Planning Center
- Main Contact: **Mary Lonetti/Brigetta Somerville**



Building Ministry Highlights

Worship

- Acoustic Practice during the week at church building
- Initially, Worship Team set up is unchanged
- Scheduled by Sam Blakey through Planning Center
- Main Contact: **Sam Blakey**



Building Ministry Highlights

Audio/Video

- Using existing sound equipment
- Equipment to be set up all the time
- For worship Sunday, three people: Soundboard, Laptop, and Technical Support
- New projector & network equipment
- Temporary radio transmission for nursery. Later video/audio streaming.
- Scheduled through planning center



Building Ministry Highlights

Janitorial

- Volunteer or Paid crew to tend to upstairs and downstairs level
- Janitorial Equipment will be located upstairs and downstairs
- Not responsible to clean tenant space
- Will conduct general cleaning of grounds and parking lot
- Report any issues to main contact
- Main Contact: **Mike Watters**



Building Ministry Highlights

Repair & Maintenance

- Will maintain all of church space
- Will maintain utility type equipment of church and tenants
- Will update and maintain equipment through out the year
- Report any issues to main contact
- Main Contact: **Mike Watters**



Building Ministry Highlights

Tenant Relations

- Main contact will monitor tenant needs and contracts
- Report any issues with or identified by a tenant to main contact
- Do not address issues directly with a tenant
- Main Contact: **Rebecca Watters**



Building Ministry Highlights

Fragrance-Free Room

- Do not want any fragrance or chemicals in the room
- Both doors are keyed
- All furnishings in the room are provided by the Andersons and should not be removed from the room
- Craig Anderson will handle the cleaning in the Fragrance-Free Room
- Do not remove from or introduce anything into the room
- Main Contact: **Craig Anderson**



Building Ministry Highlights

THANK YOU to the....

- Stage set up & tear down ministry
- Nursery set up & tear down ministry
- Trailer ministry
- Folks who have been helping with projects for the new building

**THANK YOU to all ministries who will
continue to help support the
church in the new building**



Beacon of Hope

Agenda

- Locations & Layout
- Safety
- Security
- General Use Information
- Building Ministry Highlights
- Questions



Questions

What will be available on Day One ?

- Everything we need to have the first service in the building. Not everything for the building will be up and operational. Please give us time.

Will there be construction going on while we are there ?

- At move in the contractor will have punch list items. Also, the church has to do some work & tasks with volunteers while we are in the building.

Will there be WiFi available ?

- Not till the complete system is in place and a policy is in place by the Leadership.



Questions

Who should I contact to use the building after hours?

- No process is in place at this time. No contact identified yet.

What can I do to help with the building ?

- Contact your Elders and Deacons.

How safe is the area we are in?

- Our safety is mostly dependent on how we conduct ourselves, how secure we are with the building, how we look out for one another, and how proactive we are with security .



Questions

What will the sound be like in the new space?

- It will be a learning challenge. We may have to go through multiple Sundays and try different combinations of technology including adding sound absorbing panels. Please be patient as the sound team and worship team hone in on an effective solution.

Will there be tables & chairs upstairs for the fellowship groups ?

- Yes.

Will the building and construction project end up on budget ?

- We have encountered a number of challenges that has made it difficult to do so. Currently, we are over by 2.9% or \$64K.



Questions

Will the church improve or enhance the building ?

- Yes, as funds are available and priorities are established.

Will the Fragrance-Free Room hear sound ?

- The plan is to connect the sound from the soundboard to the Andersons current equipment.

Will the nursery people be able to hear the service ?

- Our temporary solution is to use a radio transmitter to work with a typical radio (like a clock radio). In the next few months, we expect to have video and audio streamed to the nurseries. But we need TVs with HDMI inputs.



Questions

What are the near term needs for the building ?

- With the financial limits from improvements to the structure, as the Lord provides, we are planning for things like:

Mens Restroom	Lobby Furniture	Coffee Area
East Wooden Deck Removal	Exterior Landscaping	Parking Lot Upgrades
Lobby Tiling	Upper Level Improvements	Sound Panels in Worship Space
Worship Center Carpet	Sound System Update	

- Nevertheless, what is needed now, is a spirit of gratefulness to Christ for His generous provision to our young church. We know the Lord will continue to bless us through growth and opportunity for abundant ministry.



Questions

Will the church accept anything I donate to the building ?





Questions

When will we move into the building ?

- We hope to move into the building with equipment and furnishings starting Saturday, April 2nd. We are estimating our first service in the new building to be on Sunday, April 10, 2016.
 - ✓ Prep Staff – 8 AM
 - ✓ Worship Practice – 8:30 AM
 - ✓ Fellowship Groups – 9:00 AM
 - ✓ Worship Service – 10:30 AM



Questions

ANY MORE QUESTIONS.....

Contact Alex Figueiredo at
afigueiredo@beaconforthecity.org

