


NEXT50

Building on our Past ➤ Looking to our Future



WE ARE A FAMILY OF BELIEVERS FOLLOWING JESUS

 Christ Community Church | Tucson, AZ | 520.296.8501 | www.ccctucson.org



www.ccctucson.org

All drawings and renderings provided by SDG Architecture LLC

A photograph of a five-piece band performing on a stage in front of a church congregation. The band consists of a male lead singer/guitarist in a red shirt, a male bassist in a white shirt, a female cellist in a grey sweater, a male drummer in a blue and white striped shirt, and a male acoustic guitarist in a grey and blue shirt. The stage is lit with warm, orange-toned lights. The background features a wall of horizontal wooden planks. The foreground shows the backs of several audience members seated in pews.

We are a
Family of Believers
following Jesus.

*So we, though many, are **one body in Christ**, and individually members one of another.*

Romans 12:5

message from
Chris Chan
Elder Chairman



Church family, over the last few years, the Elders of Christ Community Church have been prayerfully seeking God's face about the possibility of significant renovations of several key areas on our church campus. With great joy and anticipation, I want to welcome you to the start of NEXT50 - our two-year, generosity campaign!

As you know, the founding generations of our church have prayed, contributed, and persevered over the last 50 years so that we can enjoy our beautiful campus today! Building on their example of faithfulness, we now believe it's time to seize the opportunity to remodel and rebuild to leave a legacy for the next 50 years! By investing in our facilities now, we hope to set up the next generation for maximum Gospel impact in Tucson and beyond.

The booklet you hold lays out the general outlines of our intentions to transform our church campus in two phases. Phase 1 involves the cosmetic and technical renovation of our Worship Center and the construction of a strategically-designed Children's Ministry building. As God would lead, we're prayerfully seeking to raise \$7.5 million in this two-year campaign to accomplish Phase 1. Though it lies beyond the scope of the current campaign, we also wanted to lay out Phase 2 of our plan which involves the construction of new worship and connection spaces for our Student Ministries, an expansive and welcoming atrium/lobby, newly positioned church offices, and an overall campus design that is beautiful, inviting, and up-to-date.

Psalm 127:1 reminds us that "Unless the LORD builds the house, those who build it labor in vain." We eagerly seek God's favor and blessing upon this project. Our heart's desire is to see our church well-positioned to shine the light of Jesus in our community for the next 50 years and more. If this endeavor is of God, we know He will use the prayers, hard work, and generosity of His people to accomplish His purposes, and we invite you to join us for this journey!

Chris Chan

"It's time to seize the opportunity to remodel and rebuild to leave a legacy for the next 50 years!"

CCC Story



1952

- February: Northside Assembly of God holds service for the first time in rented office space near the corner of Prince Rd. and Stone Ave.
- October: Moved into new building at 2555 N Stone Avenue (pictured above).



1976

- March: Dedicated Christ Community Church Sanctuary (current Oasis Auditorium).



1988

- April: New 1200-seat Worship Center dedicated.



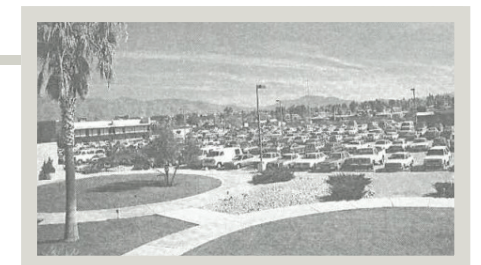
2003

- June: Family Life Center opened.



1972

- June: Left the AOG denomination, became Christ Community Church, and met at Fickett Junior High School on S Kolb Rd. for nearly four years.



1973

- February: Purchased 16-acre parcel on the NW corner of Pantano Rd. and Kenyon Dr.



1981

1983

- New Children's Ministry classrooms opened (current church office building).
- New Student Ministries building opened (current "Blue Building").



2005

- July: Family Life Center two-story classroom annex completed.

NEXT50 FOR CCC

VISION

WHAT ARE WE DOING?

We are positioning CCC for the next 50 years of faithful ministry by...

- Making significant aesthetic updates to our Worship Center and investing in new audio and visual systems for technical and musical excellence.
- Constructing a new, two-story Children's Ministry building for both church and school use, designed to maximize ministry effectiveness and safety for the kids.
- (Phase 2 - longer term) Building new worship/activity spaces for our students, repositioning our church office spaces, adding an expansive atrium/lobby to our Worship Center, and creating an overall campus design that is inviting and up-to-date.

WHY ARE WE DOING IT?

We believe now is the time to make these changes because...

- Our Worship Center is 36 years old and needs cosmetic updates. The audio/visual system has become obsolete and must be replaced. Renovating our Worship Center will greatly improve our musical experience and welcoming impact as a church.
- Our current Children's Ministry spaces are outdated, confusing in layout, and less ideal for security and child safety. A newly constructed Children's Ministry building will strengthen our ministry effectiveness to kids and serve as a welcoming draw to new families.
- (Phase 2 - longer term) Our Worship Center needs a warm, welcoming entrance that ties in with our campus. Our Student Ministries need facilities that support our emphasis on worship and small group connection. Our office buildings need repositioning, and our campus, as a whole, needs a more welcoming design.

WHAT IS MY ROLE IN THIS VISION?

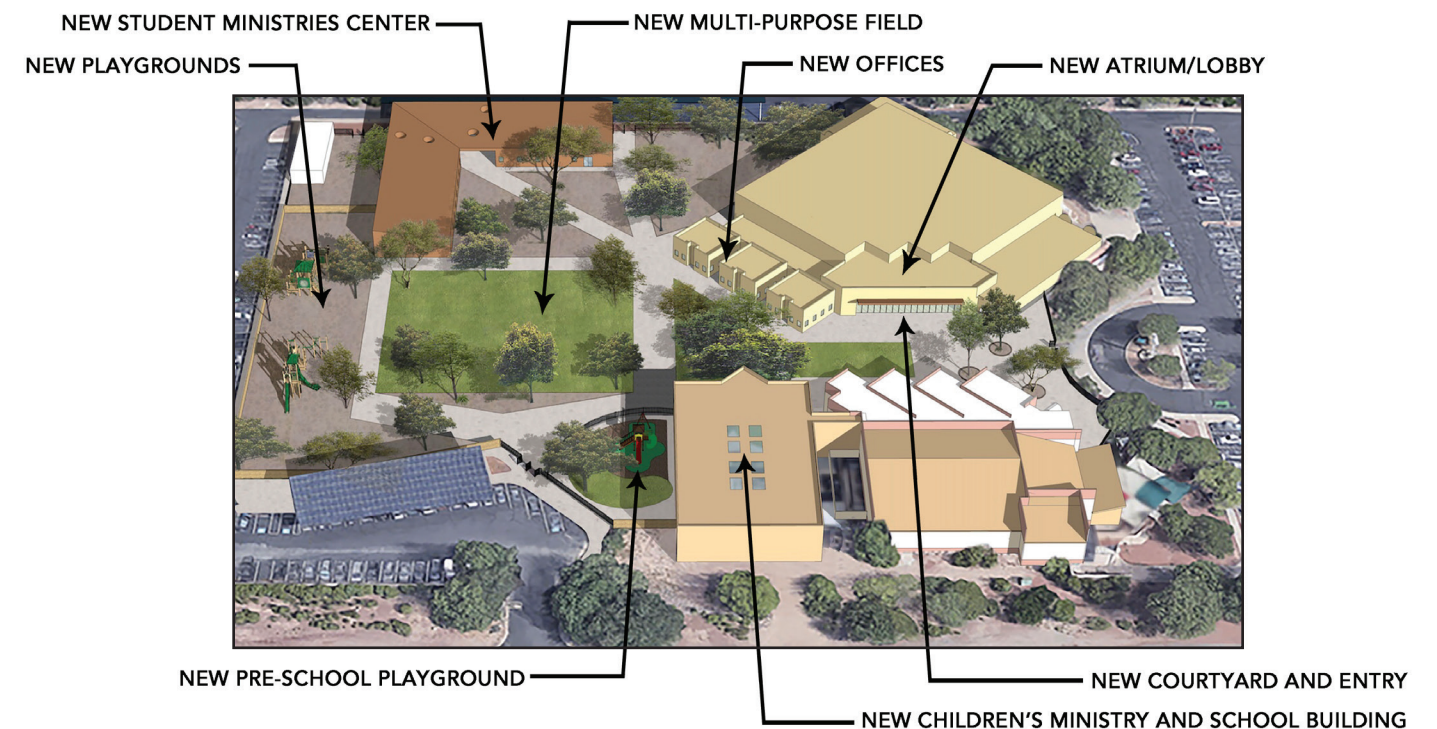
We invite you to join us in preparing for NEXT50 as you...

- Pray: ask God what He would have you give to invest in our church's future.
- Plan: assess how you might give above and beyond during this two-year campaign season.
- Anticipate: expect great joy as God provides through His people's generosity.

But as you excel in everything—in faith, in speech, in knowledge, in all earnestness, and in our love for you—see that you excel in this act of grace also. - 2 Corinthians 8:7



EXISTING SITE



FUTURE SITE

PHASE 1

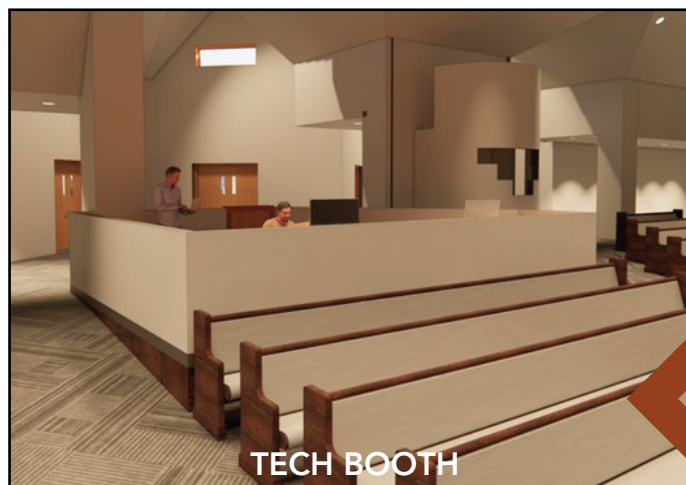
WORSHIP CENTER & CHILDREN'S MINISTRY BUILDING



Worship is at the very center of our calling as a church. We hope to beautify our Worship Center with updated carpet and seating, renovate our stage layout for better sight lines and use, and replace our current audio and visual system with new equipment that will enhance our worship services for years to come.

THE DETAILS

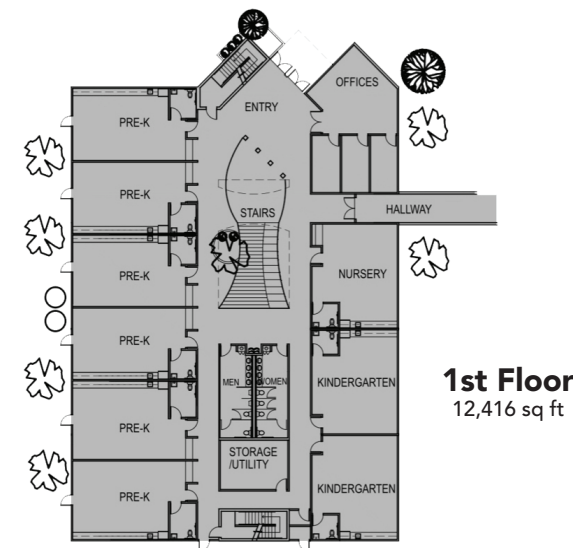
- New carpet and refurbished seating
- Enhanced stage design with new visual technology
- New audio system and technical infrastructure
- Tech booth consolidation and increased seating capacity



Discipling our children is a central passion of our church. We aim to construct a new, two-story, Children's Ministry building with a well-designed single point of entry that enhances security and gives the space an inviting appeal. Multiple classrooms for all grades in one centralized building will strengthen the ministry effectiveness of both our church and our school.

THE DETAILS

- Two stories, 20 classrooms, fenced-in play area
- Safe and unified points of entry
- Beautiful "kid friendly" design and welcoming look/feel
- Layout supporting ministry best practices for both school and church



Let the word of Christ dwell in you richly, teaching and admonishing one another in all wisdom, singing psalms and hymns and spiritual songs, with thankfulness in your hearts to God. - COLOSSIANS 3:16

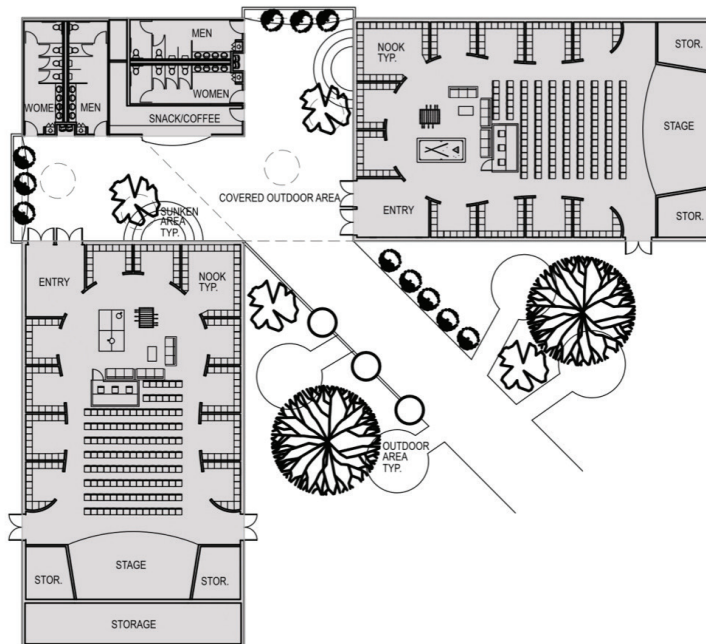
And these words that I command you today shall be on your heart. You shall teach them diligently to your children, and shall talk of them when you sit in your house, and when you walk by the way, and when you lie down, and when you rise. - DEUTERONOMY 6:6-7

PHASE 2

STUDENT MINISTRIES CENTER, ATRIUM/LOBBY, AND OFFICES



Students are a valuable part of our church family. We envision two separate gathering spaces for High School and Middle School ministries, each designed to support student worship teams and facilitate small group discipleship with several breakout rooms along the perimeter and a covered outdoor plaza for connection year-round.



THE DETAILS

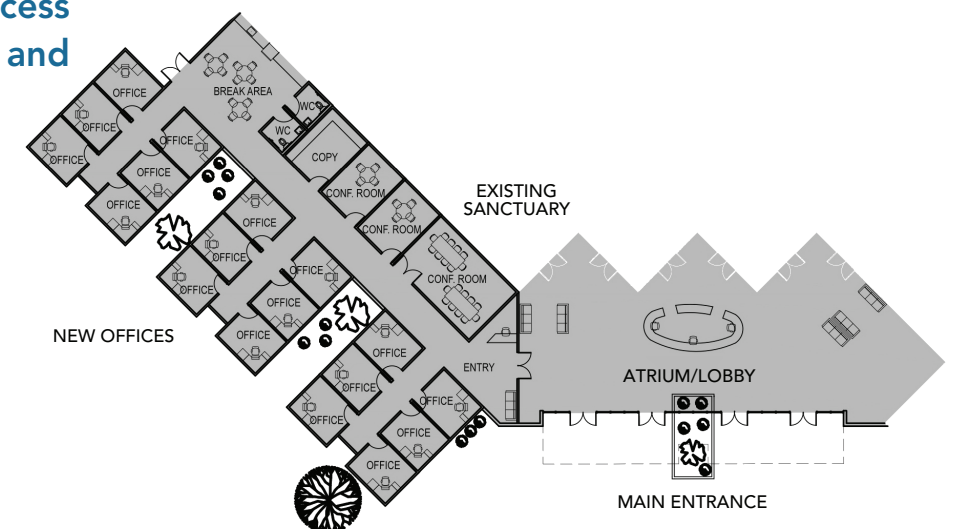
- Separate gathering spaces for High School and Middle School worship
- 20 breakout rooms for small group ministry
- Covered outdoor connection space with café counter



THE DETAILS

- Spacious atrium/lobby entrance to Worship Center
- Inviting interior for connection and information sharing
- Church offices repositioned along Worship Center for open access

First impressions matter, and we hope to build an open, welcoming atrium/lobby that serves as an inviting connection space and a helpful place for communication to visitors and members alike. Our church offices will be relocated alongside the Worship Center, providing efficient and open access to the pastors, staff, and congregation.



We will tell the next generation the praiseworthy deeds of the LORD, His power, and the wonders He has done. - PSALM 78:4

WHAT IT'S GOING TO TAKE

How are we going to accomplish our NEXT50 goals?

Many people ask the question, "What is it going to take for us to collectively give \$7.5 million to bring the goals of our NEXT50 initiative into reality?" Here are our thoughts on the question:

THE BEST AND MOST IMPORTANT ANSWER – We all need to **pray** and ask God, "What do you want me to give above and beyond my regular giving over the next two years of our NEXT50 generosity campaign?" Next, **listen and then obey**. The first church building fundraiser in history happened in 1440 BC when Moses said to the Israelites, "Whoever is of a generous heart, let him bring the LORD's contribution" to build the tabernacle (Exodus 35:5). The response: "And they came, everyone whose heart stirred him... and brought the LORD's contribution to be used for the tent of meeting" (Exodus 35:21). And there was more than enough for the tabernacle project (Exodus 36:3-7).

Funding Scenario #1 – Our Phase 1 goal of \$7.5 million is almost twice our church's annual operating budget. So, if every Christ Community Church household would take whatever amount they would normally give to the church during one year, double it, and give that amount over the next two years (over and above their regular giving), then we would hit our faith goal. Of course, not everyone can do that, and some people can do more than that.

Funding Scenario #2 – If every Christ Community Church household will give \$10,000 (over and above their regular giving) over the next two years, then we would hit our faith goal. Of course, not everyone can do that, and some people can do much more than that.

Funding Scenario #3 – One final illustration is as follows: If different CCC households gave different amounts according to the chart to the right (over and above their regular giving), then we would hit our faith goal.

NUMBER OF HOUSEHOLDS	TWO-YEAR GIFT AMOUNT
1	\$750,000
1	\$400,000
2	\$300,000
3	\$150,000
5	\$100,000
6	\$75,000
10	\$50,000
12	\$40,000
15	\$30,000
25	\$20,000
30	\$15,000
50	\$10,000
75	\$6,000
100	\$3,600
125	\$2,400
300	\$1,200

Again, the best answer is **pray...listen...obey**. The point of the widow's mite story that Jesus shared is that it is not how much you give, but how much you keep for yourself. Jesus praised the gift of two pennies that the widow gave (Luke 21:1-4). Look to Jesus for how much to give.

What is the timeline for Phase 1 of NEXT50?

If funding goals are met, renovation of our Worship Center could begin in mid-2025. The design phase of our new Children's Ministry building could start in late 2025, with the construction phase launching in late 2026 or early 2027.

Is my gift tax deductible?

Yes, the NEXT50 commitment duration is two years, March 2024 to 2026. This extends over three taxable years.



WHAT ARE WE ASKING OF YOU?

Prayerfully fill out your commitment card.

NEXT50

Three Steps to Prepare

Step 1: Pray

Ask God what He would have you give to help invest in our ministry's future.

Step 2: Plan

Assess how you might strategically give above and beyond during this season.

Step 3: Anticipate

Expect great joy in watching God provide through His people's generosity.

Three Ways to Give

- 1 A one-time cash gift
- 2 A 24-month goal for giving
- 3 Store resources
(stocks, bonds, savings, real estate, etc.)

LET'S PRAY FOR NEXT50

Father, we thank you for your faithfulness in providing for Christ Community Church through the years. We long to steward the opportunities you've given us as a church and to shine brightly with the Gospel in our community.

We seek your wisdom for these renovations, and we ask for your guidance by your Spirit. Use these updates to our church campus to position us well for powerful impact for the next 50 years and beyond!

Provide all that we need to obey your calling in these things, O God. Show each of us how we might contribute. We lay all of our plans at your feet.

In Jesus' name, Amen!

Now to **HIM** who is able to do
far more **ABUNDANTLY** than all that
we ask or think, according to the
POWER at work within us,

to Him be **GLORY** in the **CHURCH**
and in **JESUS CHRIST** throughout
ALL GENERATIONS,
forever and ever. **AMEN.**
Ephesians 3:20-21

