



CONGREGATIONAL UPDATE

—
APRIL 2024



AGENDA:

- 1: The Results from the Survey
- 2: Next Steps
- 3: Q & A

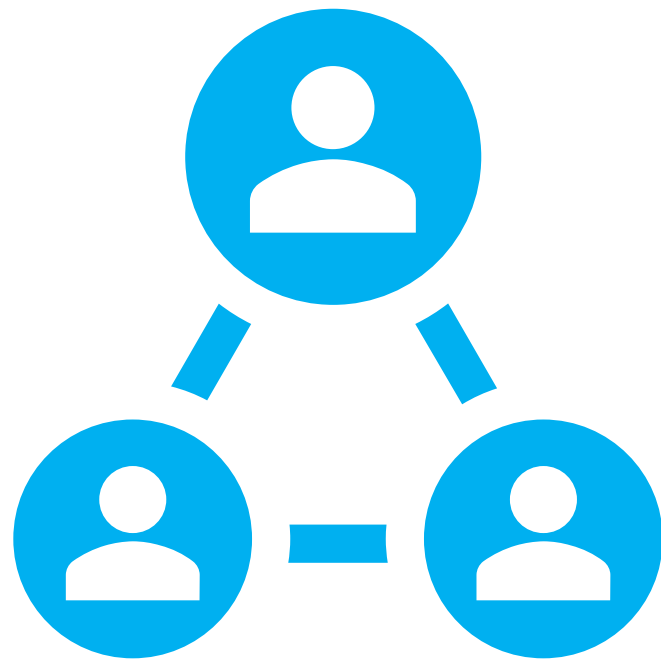
Psalm 31:23-24

Leader: Love the Lord, all you his saints!

Congregation: The Lord preserves the faithful but abundantly repays the one who acts in pride.

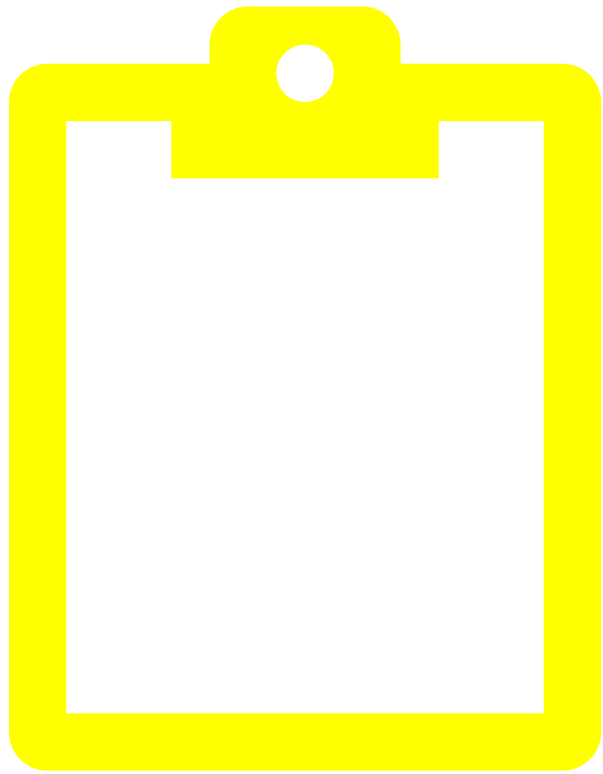
Leader: Be strong and let your heart take courage,

Congregation: All you who wait for the Lord! Amen!



Meeting Purposes and Goal

1. To catch you up on the results from the Congregational Survey.

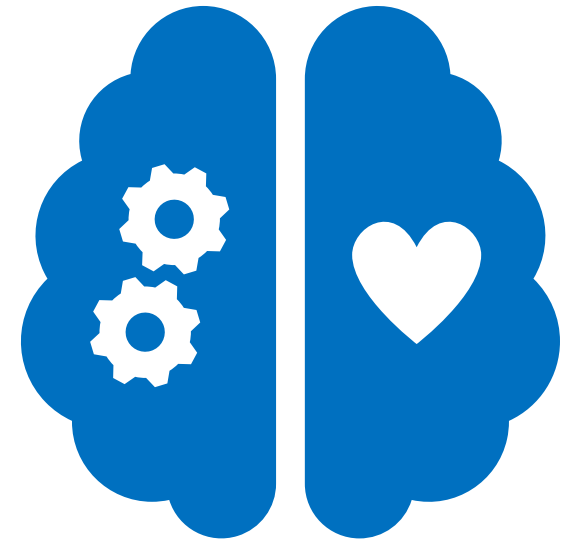


Meeting Purposes and Goal

2. To continue to non-anxiously discern more specifically a potential direction for next steps without a decision looming
 - Online Survey to be sent out in the next few weeks to be returned by **TBD**

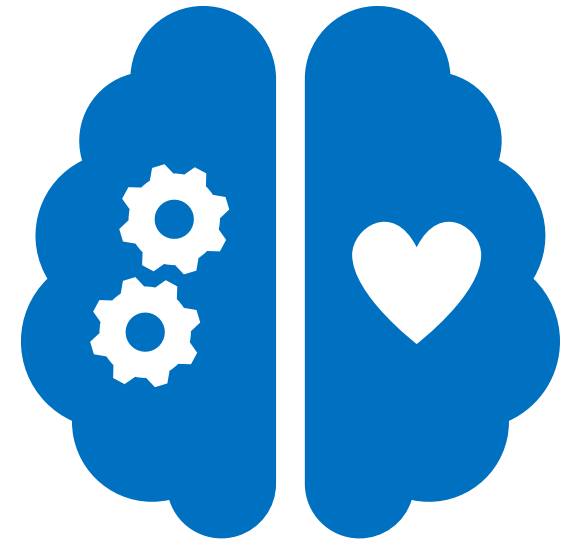
Important Things to Remember

- Our rent at KCC has doubled (but remains below market value)
- Our current space limits what we can do for fuller Christian Education and festivity, thus limiting growth
- We will periodically be displaced in various ways based on local, state, and national elections which limits growth
- We've been given a loose window of 3-5 (maybe 7) years before major changes would be made to the existing building

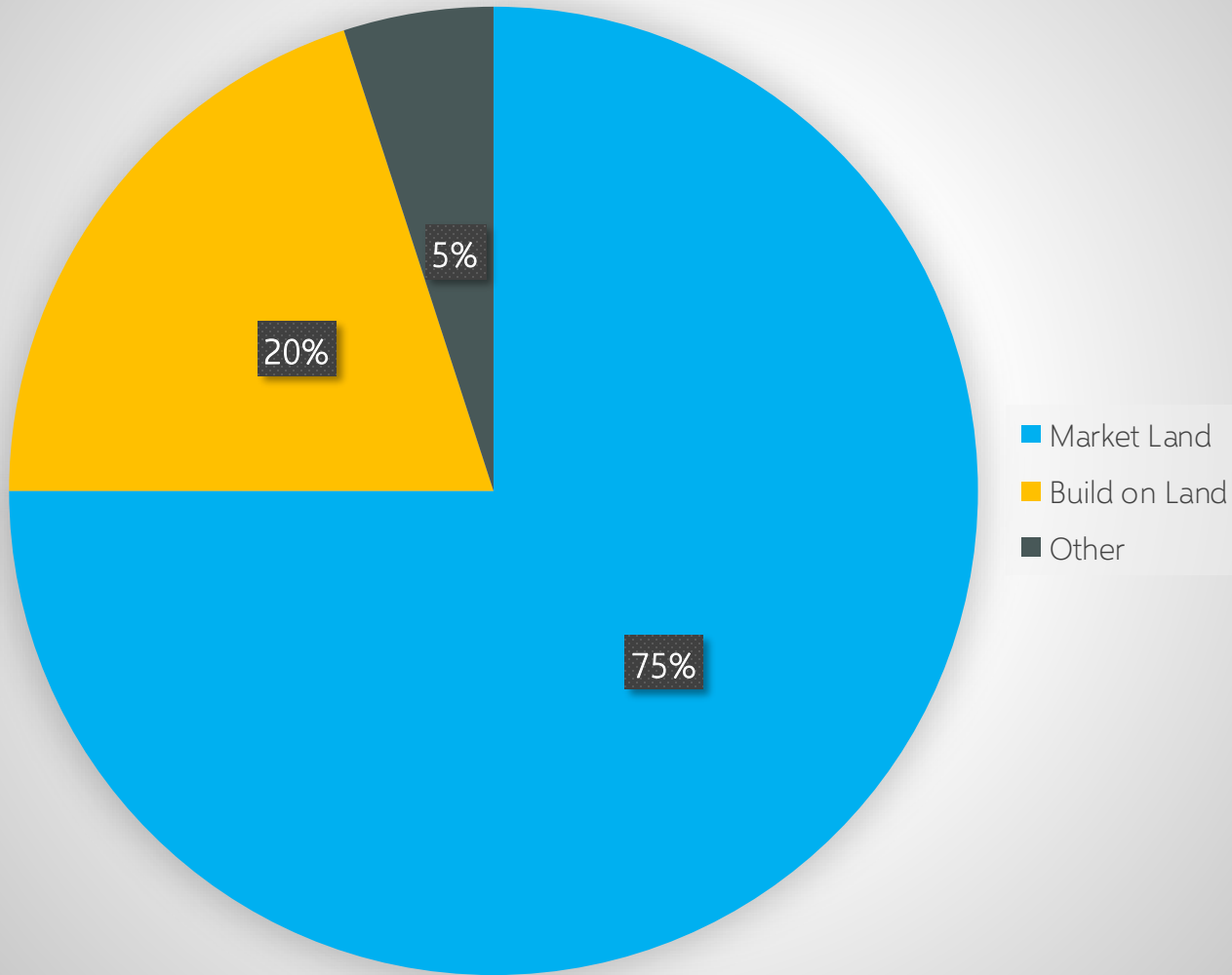


Important Things to Remember (cont'd)

- We renew our lease yearly, which could bring changes
- We don't currently have enough financial liquidity to purchase an existing space (approx. \$1-2M in cash on hand to be able to put in an offer)
- We don't currently have enough financial liquidity to build on our land (approx. \$4M to build). We have approx. \$270K in our Building Fund and approx. \$393K in Emergency Reserves



Q1



Q1. What do you think is the wisest path forward after hearing the presentation on January 28?

- Approximately 75% were okay with us marketing the land to see what we could get for it
- 20% think we should seek to build on the land
- 5% No strong opinion

Q2. How attached are you to the land?

Limited attachment to the land with responses averaging 33 out of 100

Q3. How urgent do you perceive it to be that we find a more accommodating facility?

Lack of anxiety overall about finding a more accommodating facility within the next 5 years with an average of 50 out of 100.

Q4. How important is it that we own our next facility?

Moderate to Strong sense of importance in owning our own facility with an average of 62 out of 100.

Q5. Please give your impression of our approach to raising capital.

Overall acceptance of current fundraising approach with an average of 41 out of 100. A tangible goal would help.

Q6. How willing are you to give even more sacrificially for a new facility?

Moderate sense of being willing to give sacrificially with an average of 53 out of 100.



Summary of Your Ideas

- Set some deadlines for options and financial targets
- Talk with a church that has been through this that is similar to us to glean wisdom
- Price the land at an “offer we can’t refuse” price in the \$5-6M range



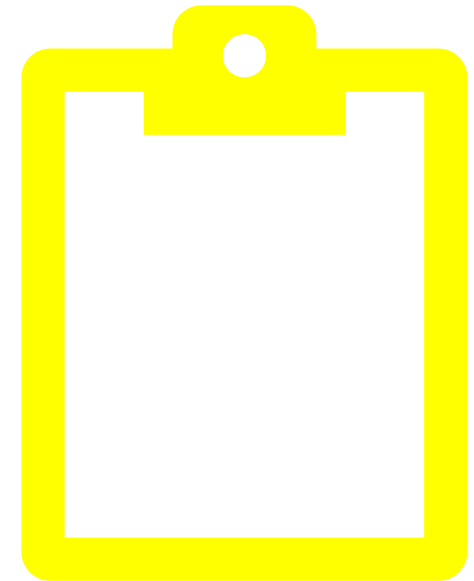
Summary of Your Ideas

- Research giving groups and grants for church buildings
- Share a facility with another church
- Consider income possibilities on the land such as pickle ball
- Start a Kickstarter campaign to raise money
- Consider multiple geographic locations

What We're Asking of You

Prayerfully fill out the
Survey that will be emailed
out in a few weeks and
return by

TBD



OPEN FORUM: Q&A