

As we come upon cold and flu season, as well as Covid-19 and the variants, we want to keep you all safe and healthy. For your health and the health of others, if you think you may have been exposed to Covid, either stay home or please wear a mask and keep a safe distance from others. If you're not feeling well, we ask that you stay home and stream the service [from our website](#) or [YouTube](#), or you can even watch it later after it's posted to our website. Please pray that God will heal those that are feeling ill at this time.

FBC, Newman has a more than a few ways for you to give; online through [tithe.ly](http://tithe.ly) on our website, by mail, by dropping your envelope off at the church office, or at a Sunday morning service. We thank you for faithfully giving. Clearly mark your offering envelopes with your name, amount of your tithe or offering, your address, and any changes we need to make.

**FBC, Newman's Guest Wi-Fi Password is: guest1234**

#### **NOMINATING COMMITTEE REQUEST:**

If you're interested in serving God and your church family? Contact **Mike** at 543-4917 or [msajdalton@sbcglobal.net](mailto:msajdalton@sbcglobal.net) to find out where you can serve. We are a small church right now and it's going to take us all pitching in and helping where needed.

#### **Church Staff**

<i>Senior Pastor Tim Rempel</i>	<i>(209) 602-2492</i>
<i>Associate Pastor Tim Weimer</i>	<i>(209) 324-4958</i>
<i>Administrative Assistant Ruth Carey</i>	<i>(209) 631-6585</i>
<i>Worship Leader Marsha Silva</i>	<i>(209) 585-5246</i>

WHOEVER  
CLAIMS  
TO LIVE  
IN HIM  
MUST  
WALK AS  
JESUS DID  

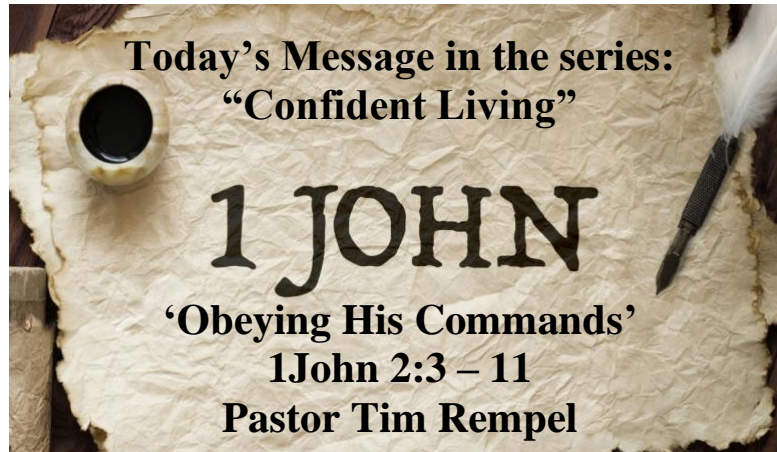
---

1 JOHN 2:6



## ***First Baptist***

**Church of Newman**  
**910 R Street / P.O. Box 759**  
**Newman, CA 95360 (209) 862-2393**  
<http://www.fbcnewman.org>



### **Sunday, August 29<sup>th</sup>, 2021**

- 9:45am** Sunday school for all ages  
**11:00am** Sunday Morning Worship – on [YouTube](#)  
On website at: [www.fbcnewman.org](http://www.fbcnewman.org)  
**6:00pm** 5<sup>th</sup> Sunday Sing and Share – dessert to follow  
(See insert in bulletin)

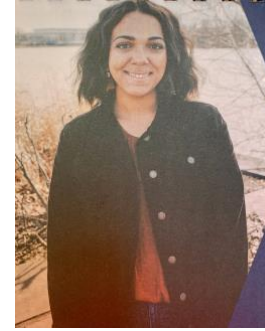
### **Children's Church**

For children in TK through 3<sup>rd</sup> grades. After the Worship time the children will be prayed for and dismissed to attend Children's Church. Please bring your children and have them invite their friends to come along.

### **This week's schedule:**

- Wed 09/01 *Women's Bible Study here at 10:30am*  
Bible Study & Prayer here at 7pm  
Thur 09/02 *Men's Group here at 7pm*

### **NAMB PRAYER CALENDAR**



Brianna (Bri) McKinney, NAMB  
Journeyman, Pinewood Church  
18475 West 83<sup>rd</sup> Dr., Arvada, CO 80007  
[bmckinney@namb.net](mailto:bmckinney@namb.net)  
@pinwoodboulder / @pinewoodchurch  
Pray for the opportunity to meet more  
people where they are and point them to  
Jesus – in Boulder, as in Heaven.

Pray: 08/29/2021 – 09/04/2021

### **HISPANIC MINISTRY**

The number of Hispanic SBC churches grew by more than 65 percent between 2000 and 2010, according to Annual Church Profile statistics provided by LifeWay Christian Resources. Pray that God will raise up planters with a burning, God-given passion to reach Hispanics (whether they are first, second or third generation) by starting new, Multiplying Churches in North America, regardless of the obstacles they may face. Pray for Hispanic leaders who would intentionally, by word and deed, influence the established churches and pastors nationwide to become Sending Churches in their geographical areas and across the U.S. and Canada.

### **5<sup>th</sup> Sunday Sing and Share - **TONIGHT**:**

**See the insert in your bulletin. You could share your testimony, a poem, a verse, a song, a special memory, etc... We will have a dessert fellowship directly following this event. Please bring a dessert to share with others.**