



FIRST BAPTIST CHURCH
TOMBALL



LET'S GO

GO DEEPER • LIVE INTENTIONALLY • REACH FURTHER

LET'S GO

GO DEEPER • LIVE INTENTIONALLY • REACH FURTHER

We are strategically locating the heart of our church's ministry and facilities over the next two years, creating greater opportunities to reach the Tomball Area.

First Baptist Church Tomball was founded in 1909. By God's Grace, we have grown with our community. For 114 years, we have been sharing the great story of finding a full-life in Jesus from the beginning. Through the years, we have seen the Lord do many exciting things.

"I knew that when God was ready to move us to a new location, He would. I'm so excited to see what He's going to do next! 'God can do exceedingly and abundantly more than we can think or imagine.' Let's give Him Glory!"

- Eileen Allen



"I'm grateful for First Baptist Church Tomball because it has taught me that I am rich in God's love and blessings."

- Danielle Vanya

Today, the greater Houston Area is one of the fastest growing regions in Texas. God continues to bring kids, families, and adults to Tomball. As a church, our call is to GO and invite others into a life-changing relationship with Jesus. We get to share with them the amazing experience of knowing Jesus!

With all the new faces at FBCT, our current space and location has significant challenges to those currently attending our church. Our location is separated by multiple streets, making it dangerous for kids, parents, families, and older members to move from one building to another.



Our relocation effectively addresses difficulties with our current location, such as adverse weather, deteriorating construction, security concerns with buildings, and easier access for people with disabilities and elderly individuals. These issues, combined with the fact that our current campus is landlocked, leave us with the best financial and practical decision: to relocate to our Highway 249 property.

Our leaders, in the late 1990s, looked ahead and saw these 3 challenges:

- The accelerated population growth of Tomball Facility challenges and inefficiencies
- The new interconnected regional aspect to Tomball

These godly men and women began praying and planning. By God's leading, in 2003, thirty-two acres of land was purchased for the development of the new First Baptist Church Tomball home.

Over the next 2 years, we will be strategically locating the heart of our church's ministry and facilities. This development creates opportunities to influence our region with the Hope that is found in knowing Jesus.



Our Vision

As this region continues to expand, we remain committed to living out God's mission. As Jesus stated, "Go therefore, and make disciples of all nations" (Matthew 28:19). By inviting others into a life-changing relationship with Jesus one conversation at a time.

Our Passion

We believe that if every generation, from children to adults, could hear the Gospel and be transformed by a life-changing relationship with Jesus, then our region itself would be transformed. This is the power of God's movement in our lives and why we must GO!

Our Opportunity

The best way to see widespread personal and community transformation is to be a viable presence in this community. We must embrace the opportunity and GO. It's time for First Baptist Church Tomball to GO... TOGETHER!



WE PLAN TO DO THIS IN THREE WAYS:

Go Deeper

At the new campus of First Baptist Church Tomball people of all ages will have the opportunity to continue to seek and deepen their relationship with Jesus Christ.

Live Intentionally

As our church finds greater fulfillment in our lives, the new campus positions us for a greater impact in the future.

Reach Further

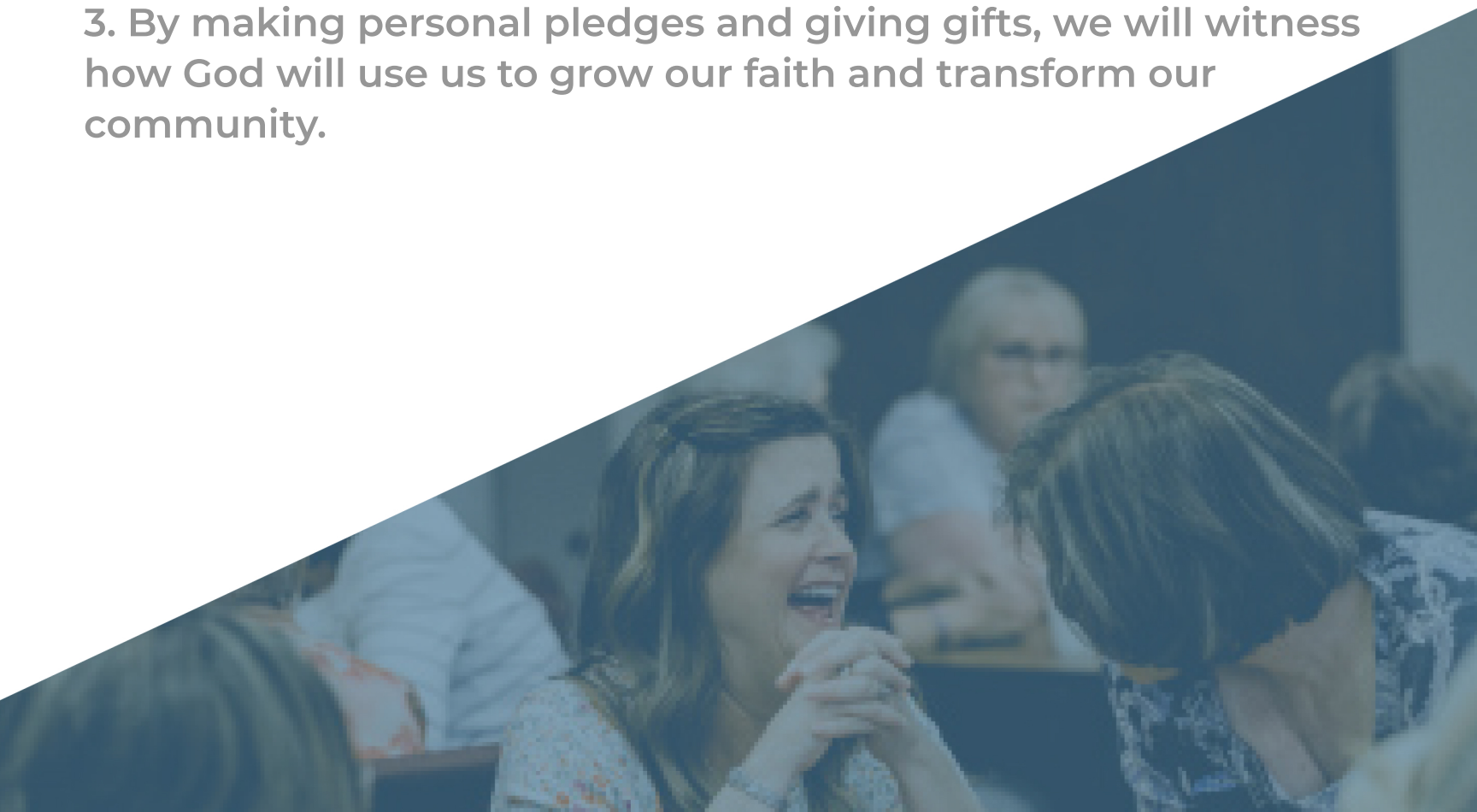
Our new campus will create greater opportunity to reach the growing population and embrace the expanding region. Bringing the life-changing message of Jesus to more people is exciting! Our future looks great!

Ready? What's Next?

The time to GO is now! We have seen God's faithfulness first hand through the sale of our building, and we are filled with excitement to move forward into a new chapter. We invite you to join us on this journey and take a leap of faith with us. Jesus' command to "GO" challenges us to step out of our comfort zones and into our calling, even though it may not be easy or comfortable.

I'm Ready! Let's Go!

1. Invite and engage our neighbors and friends to see Jesus!
2. Enable ourselves to invest financially in the vision of the LET'S GO! campaign.
3. By making personal pledges and giving gifts, we will witness how God will use us to grow our faith and transform our community.



Phase 1 Building Renderings



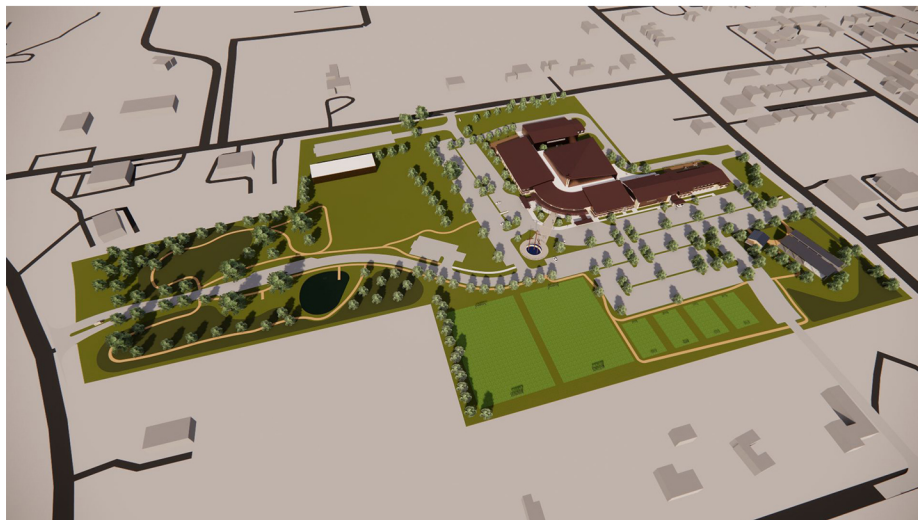
Our worship center is not only capable of hosting weekend services for up to 400 people, but it is also an ideal venue for church-wide events such as meals, conferences, and ministry events like VBS (Vacation Bible School). With a flat floor, this space can be easily configured to accommodate tables and chairs, making it an incredibly versatile and functional space for our congregation.



As you enter the parking lot from Quinn Road, the Southside of our Phase 1 building will immediately catch your eye, housing our adult and youth rooms. As you continue further into the lot, you'll be greeted by our covered drop-off area, lobby, and the spacious worship center, making for a seamless and convenient experience.



As you enter from the parking lot into the Phase 1 building lobby, you'll see a well-designed, open and inviting space creating a friendly atmosphere for gathering.



Phase 1 is just the beginning of the exciting expansion plans for FBCT. In addition to a beautiful lobby, the church will add an adult class building, children's building, and a 1,200 seat worship center, all anchored by a stunning cross at the main entrance. The community will also enjoy walking trails, splash pads, and a fishing pond and outdoor event venue making this an all-encompassing space for fellowship and fun.

FAQ's

Please provide a Brief Description of Phase 1.

Based on building planning and perceived financial capacity, Phase 1 will include a 400 seat worship center and lobby/gathering area along with secure classrooms and play areas for all kids and children's activities. It will also include a youth area, adult classrooms, and other supporting facilities, including additional parking (by the pavilion) and expanded detention ponds required for rainfall runoff control.

How has security been considered in the design plans?

The Phase 1 building has two entrances: one main entrance from the parking lot and one supplemental entrance at the rear of the lobby. All exterior doors are locked and can only be opened from the inside. The children's hallway has a secured doorway and check-in desk for registered parents/guardians only. Outside play areas can only be entered via their classrooms and the secure check-in desk. The facility is normally locked during the week and monitored by intercom/video cameras for visitor entrance.

What are details on the capital fundraising campaign?

Capital campaign planning began in late 2022, and development of details have proceeded with meetings to gauge support. Church member's financial commitment focus will occur in Fall 2023, with the opportunity to submit giving commitment cards for the next 24-month period. Contributions can be made in various forms. Prayers are requested for provision and generosity during this preparation period.

What is the financial plan for Phase 1?

Proceeds from the sale of the Oxford Campus (\$4.5MM) were used to pay off the previous property loan and invested in CDs until needed. A capital fundraising campaign will also contribute to the project, and construction financing will be pre-approved if needed.

From which street will we enter the parking lot?

For Phase 1, it is planned that the existing entrance from Quinn Rd (by the Pavilion) will be adequate. As future phases of the campus are developed, entrances may be connected from Hicks St (to the North), from SH-249B (to the West), and potentially to Rudel via Bovinghausen (to the South) of the building complex.

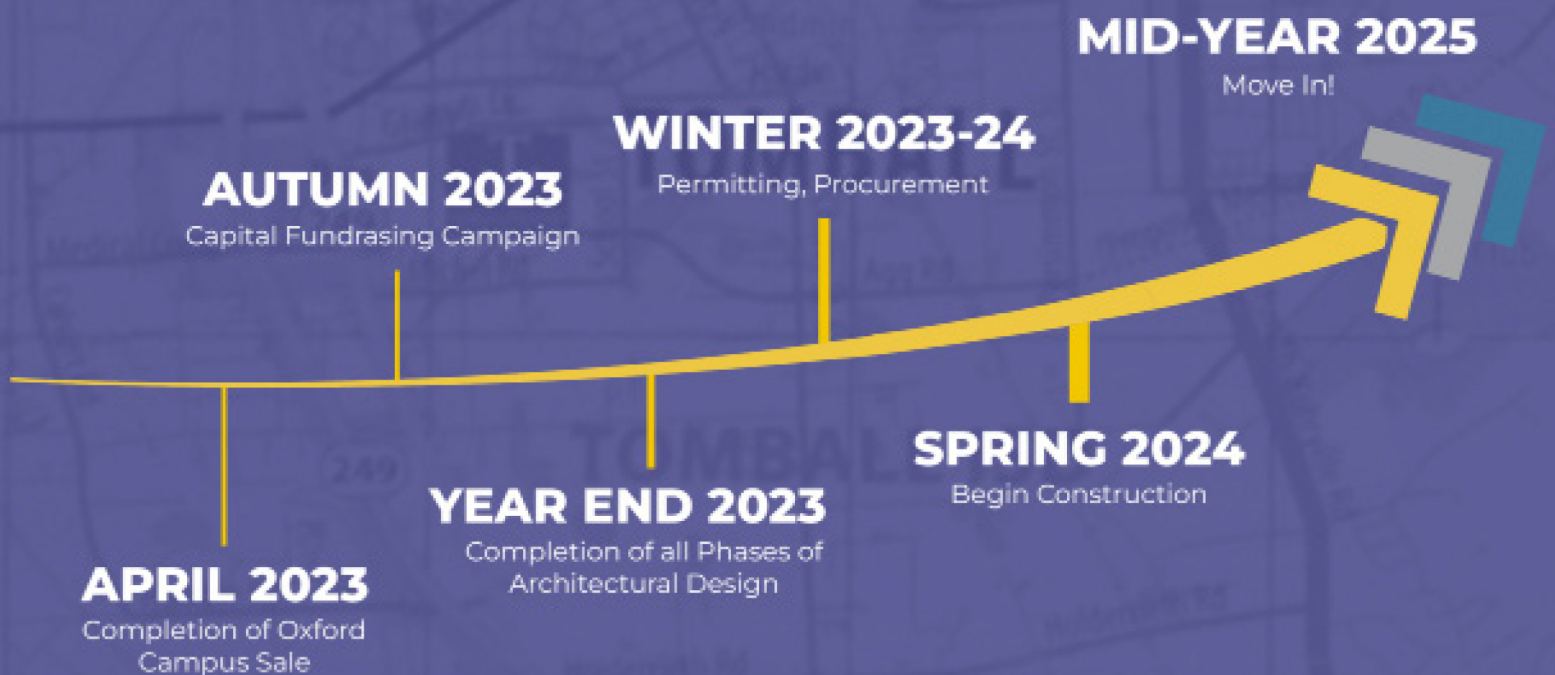
Where can I direct other questions that I have about the project or campaign?

We plan to communicate the schedule and update the congregation on the process throughout the planning and building phases via Townhalls, monthly website updates, constant contact emails, etc.

Also, you may email "ministry@fbctomball.org" or call the office at (281) 351-4997 with any questions, comments or requests for appointments.

LET'S PRAY

WE ARE STRATEGICALLY LOCATING THE HEART OF OUR CHURCH'S MINISTRY AND FACILITIES OVER THE NEXT TWO YEARS, CREATING GREATER OPPORTUNITIES TO REACH THE TOMBALL AREA.



Stay Up To Date!

Scan the QR code or visit fbctomball.org/letsgo to get the latest updates on our relocation and what God is doing through First Baptist Church Tomball!



CONTACT INFO

401 Oxford Street, Tomball, TX. 77375

Phone: (281) 351 - 4997

Email: ministry@fbctomball.org

Website: www.fbctomball.org

Publish Date: September 2023



**FIRST BAPTIST CHURCH
TOMBALL**