



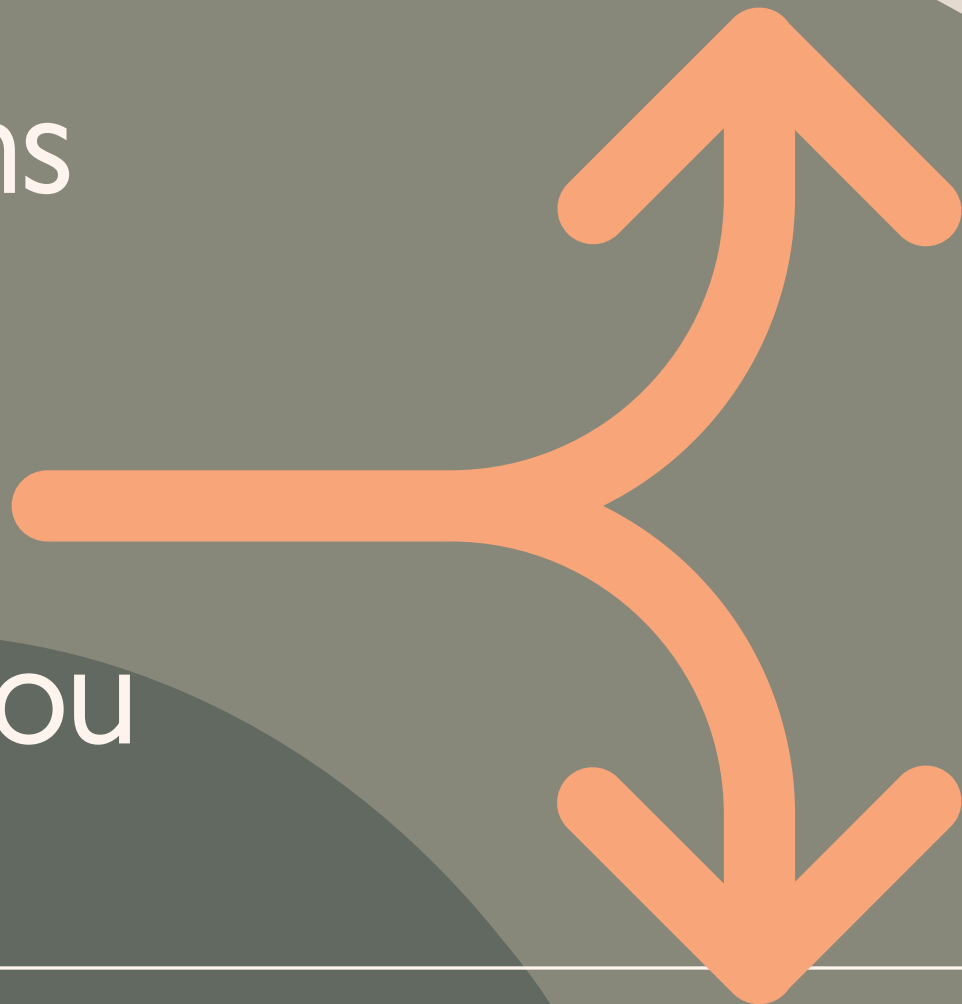
Proverbs: People At A Crossroads

Proverbs: People At A Crossroads - Message

Two very different paths
stretch out before you

—

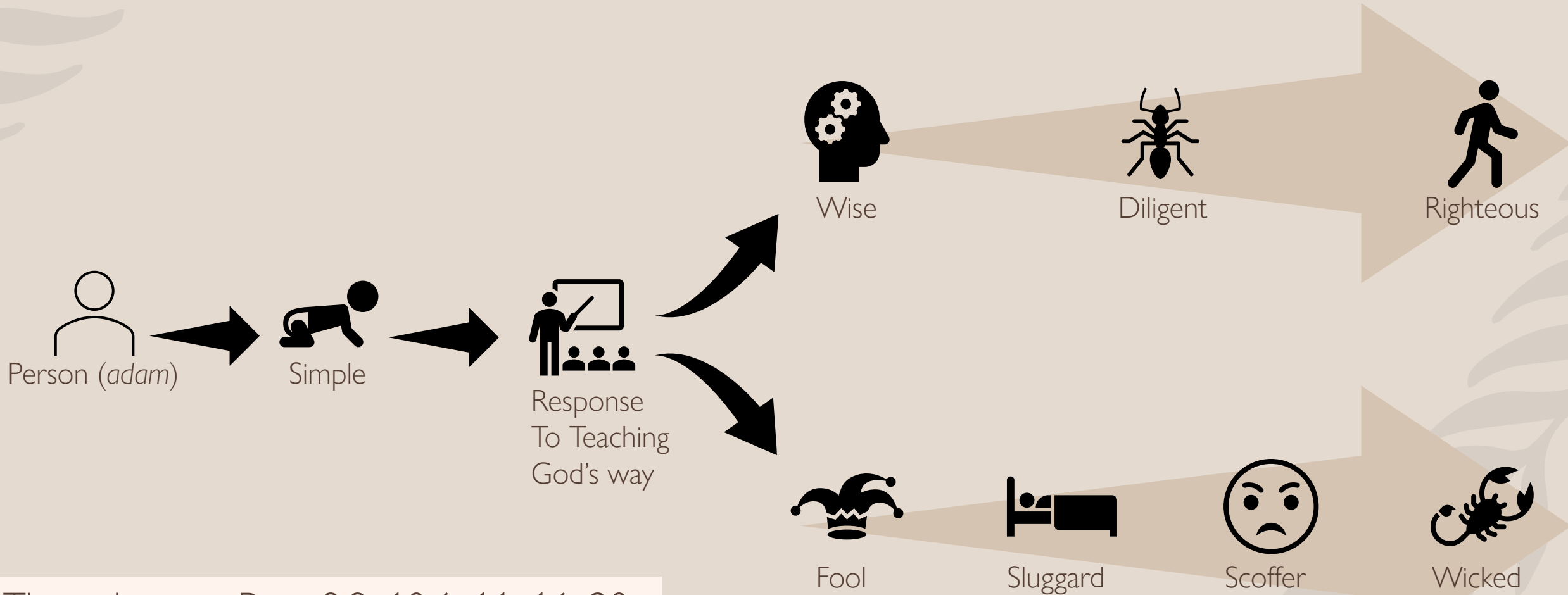
Choose wisely which you
will take



Proverbs: People At A Crossroads

- I. At the crossroads, each person chooses their path**
 - A. We each have the same starting point**
 - B. Some foolishly try to linger there**
 - C. Your response to Yahweh determines your path**
- II. Walking the fool's path is sloth and wickedness**
- III. Walking the wise person's path is diligence and righteousness**

People in Proverbs



The righteous: Prov 9:9; 10:6, 11, 16, 20, 25-31; 28:1; 11:23; 12:5, 12, 26; 13:5, 9, 25; 15:29; 20:7; 21:15, 26; 23:24; 29:6;

Wise people still seek out and kill foolishness



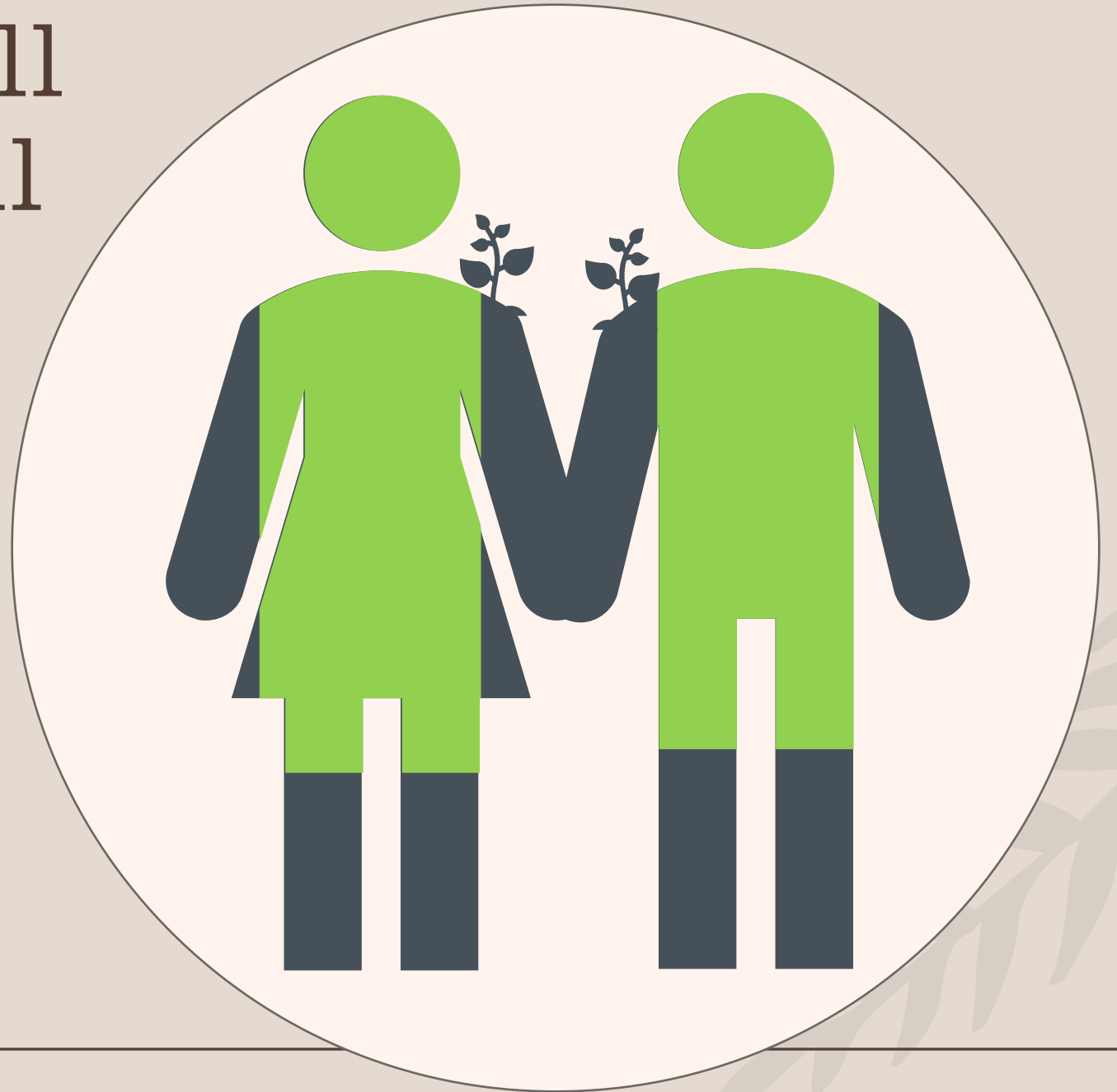
Foolishness born
with (Prov 22:15)



Wisdom growing bit
by bit



Foolishness can still
pop up



Proverbs 13:20

- Contrast
- Symmetrical

- 1) He who walks with the wise will be wise
- 2) But the friend of fools will suffer harm

- He who walks
- With the wise
- Will be
- Wise

- The friend
- Of fools
- Will suffer
- Harm

Associations matter!

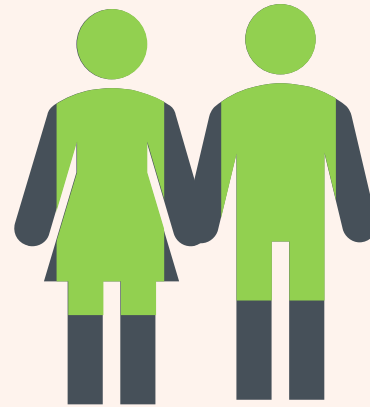
The company of wise people



Foolishness we're
born with (22:15)



Wisdom growing
bit by bit



Proverbs 13:14

- Line 2 explains the consequences of Line 1

- 1) The instruction of the wise is a fountain of life
- 2) To turn aside from the snares of death

- The instruction
- Of the wise
- Is
- A fountain of life

**To
what
end?**

- To
- Turn aside
- [Himself and others]
- From the snares of death

Lines not parallel but sequential

Righteous Wise vs Wicked Fools

“The righteous...are willing to disadvantage themselves to advantage the community; the wicked are willing to disadvantage the community to advantage themselves”

(Bruce Waltke, *Proverbs*, 1:97)