



Power of Wisdom's Influence

Proverbs 8:12-21 - Message

God's wisdom has the power to transform believers in this life

Proverbs 8 – Structure – Wisdom is Better

Righteous beauty of Lady Wisdom's teaching (1-11)

Relational bonds of Lady Wisdom's experience (12-31)

Power to influence those who love her in the present (12-21)

Pleased to serve Yahweh in the past (22-31)

Rich blessings for Lady Wisdom's close companions (32-36)

Biblical Wisdom

Biblical wisdom has a spiritual foundation (fearing & knowing God)

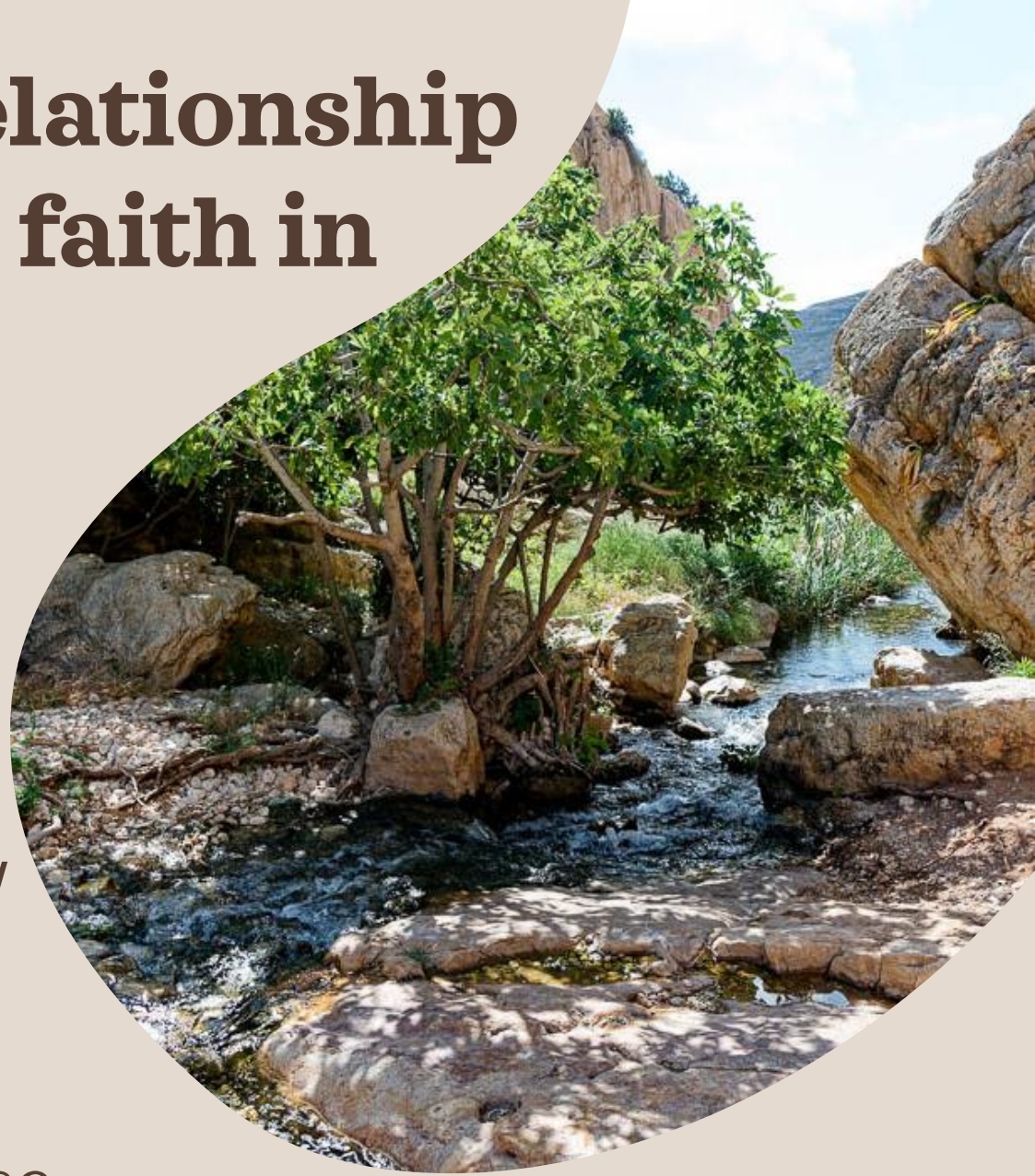
True wisdom is from God, it is about God, it is designed to bring us to God and to help us live God's way

Proverbs 8:12-21

- I. Lady Wisdom's essence is spiritual understanding (12-14)**
- II. Lady Wisdom's influence extends to all levels of authority (15-16)**
- III. Lady Wisdom's rewards are for the believer's benefit (17-21)**

The fear of Yahweh is a relationship of humble, wholehearted faith in God (Prov 1:7; 3:7; 9:10)

- Starting point and foundational principle
- *Biblical wisdom departs from all other wisdom at the very beginning*
- Faith in Yahweh is essential
- To orient yourself to Him by faith
- Fearing God drives everything else



Understanding “Evil” (Prov 8:13)

1. Evil arises from a person’s **pride** and **arrogance**. Both words from the verb “to rise up”, lifting the head, the body language of pride (Job 10:16).
2. Those who don’t fear God are characterized by evil. Evil is their “**way**”.
3. They verbally contradict God’s way. **Perverted** is lit., “upside down” speech.



PRIDE AND ARROGANCE

PROVERBS 8:13

“Evil is based on these fundamental vices that refuse to submit to authority” and arrogance is “a self-confident attitude that throws off God’s rule to pursue selfish interests”

(Bruce Waltke, *Proverbs*, 1:401; see Ps 17:10)

GOD'S WISDOM VS MAN'S WISDOM

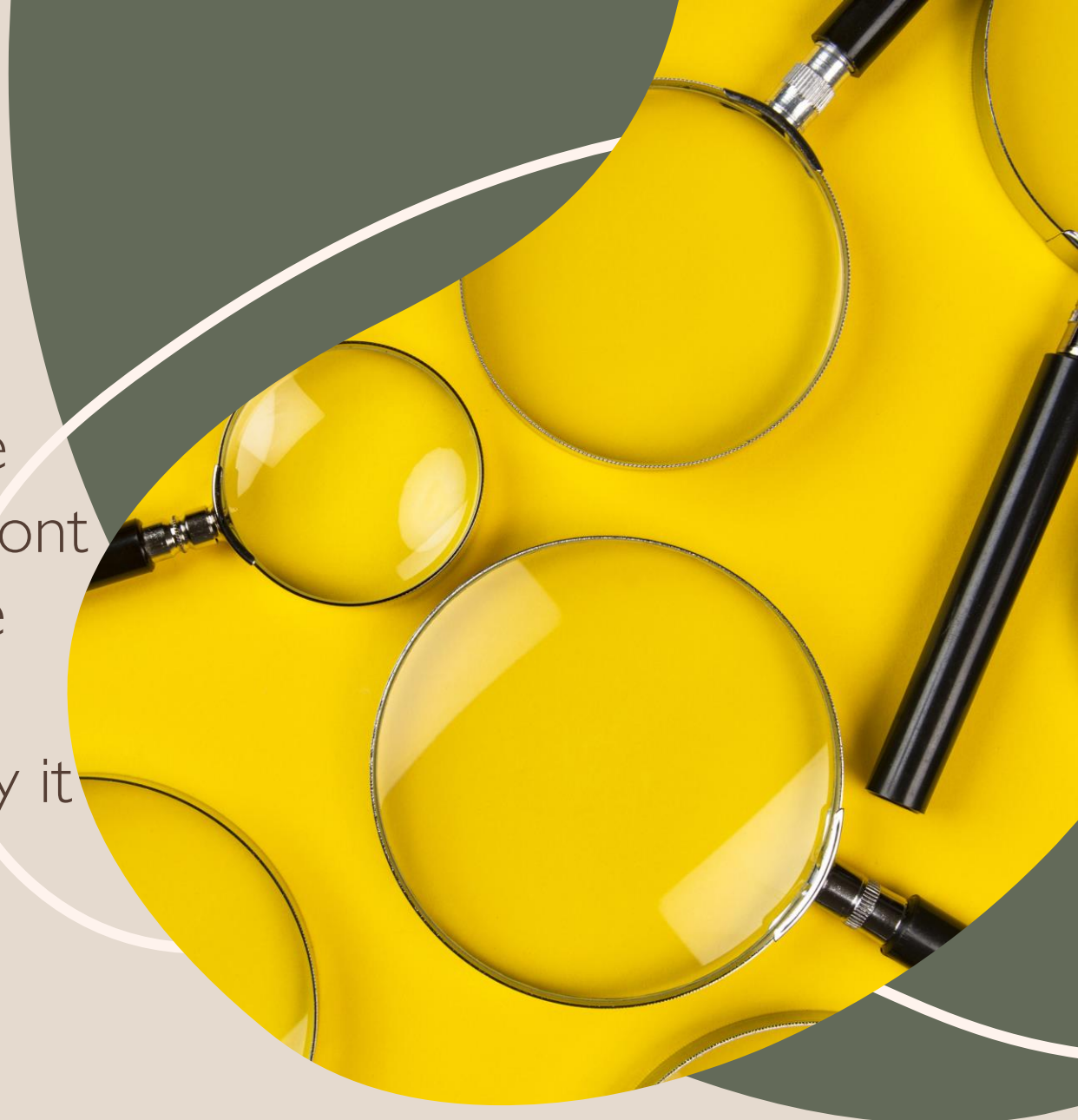
“*God’s wisdom* makes the glory of God’s grace our supreme treasure. But *man’s wisdom* delights in seeing himself as resourceful, self-sufficient, self-determining, and not utterly dependent on God’s free grace”

(John Piper, *Think*, p. 149)
(See Jer 17:5; 1 Cor 1:18-25)

Proverbs 8:14

Might

- Language of warfare, describes valor, bravery in the face of opposition, the strength required to stand and confront
- “For counsel to be worth its salt one must have not only a strategy for success but also the strength to carry it out and not to flinch in the face of opposition”
- (Bruce Waltke, *Proverbs*, 1:402; see Job 12:13)





WEALTH AND WISDOM

“Paradoxically when wealth is sought it corrupts, but when wisdom is sought, edifying wealth is given”

(Bruce Waltke, *Proverbs*, 1:405; see 1 Kgs 3:4-15)

Wisdom's Fruit & Produce

These point to wisdom as the cause of the transforming power that works inside the person who fears God and embraces His wisdom

