

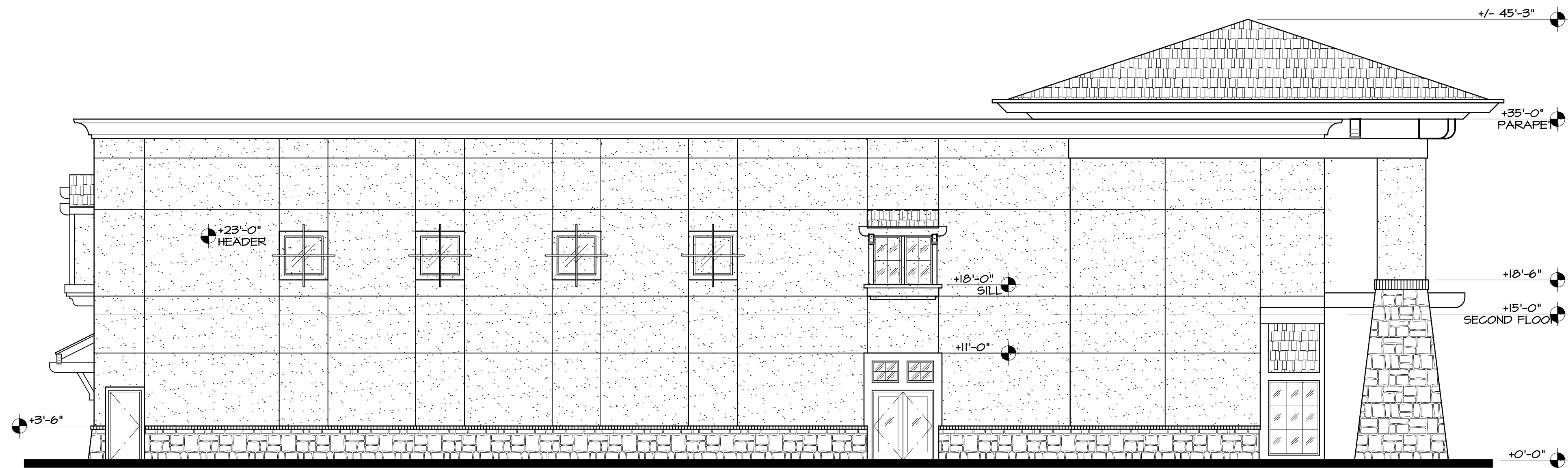
EXTERIOR PAINTING SCHEDULE

THE FOLLOWING ITEMS SHALL BE PAINTED, UNLESS OTHERWISE INDICATED, PAINTING REQUIRED AT ALL (N) AND (E) OF EA. ITEM LISTED	THE FOLLOWING ITEMS DO NOT REQUIRE FIELD PAINTING, EXCEPT FOR TOUCH-UP AS REQUIRED IN SPECIFICATIONS:
EXPOSED GSM FLASHING & CAPS EXPOSED CONCRETE FOUNDATION/BULKHEAD HOLLOW METAL DOORS & FRAMES ROOF ACCESS HATCH WOOD TRELLIS (HEAVY BODY STAIN) MOULDED FASCIA & TRIM DECORATIVE STEEL BARS STEEL CORBEL SUPPORTS TRASH ENCLOSURE GATE ORNAMENTAL IRON CROSS EXPOSED WOOD BEAMS (HEAVY BODY STAIN) EXPOSED RAFTER TAILS (HEAVY BODY STAIN) ROLL-UP SERVICE DOOR SHINGLE SIDING COMPOSITE WOOD TRIM EXPOSED T&G DECK (HEAVY BODY STAIN) EXPOSED INTERIOR CMU AT ENCLOSURE	STOREFRONT SYSTEM CONCRETE ROOF TILE CULTURED STONE VENEER (SEALER) BRICK CAPS (SEALER) EXTERIOR CEMENT PLASTER & EIFS SYSTEM
EXPANSION JOINTS: IN EIFS SYSTEM-----SEE DETAIL 20/A907 IN EXT. CEMENT PLASTER O/ PLYWOOD SHTG. O/ WOOD STUDS ----- SEE DETAIL 9/A907	

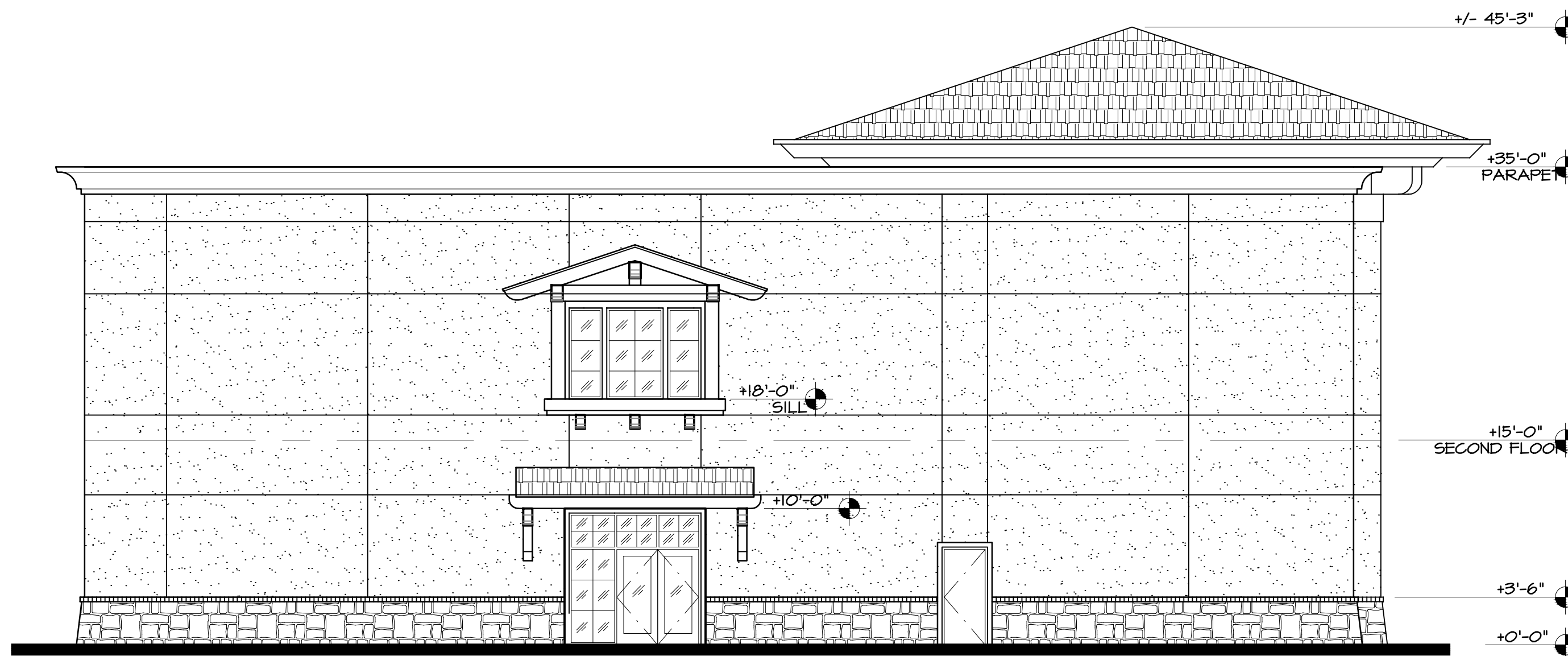
EXTERIOR FINISH SCHEDULE

MARK	MATERIAL	DESCRIPTION	MARK	MATERIAL	DESCRIPTION	MARK	MATERIAL	DESCRIPTION
1	ALUMINUM STOREFRONT SYSTEM	4-1/2" THERMAL BREAK, DARK BRONZE ANODIZED FINISH, OPENABLE WHERE INDICATED	12	EXPOSED STEEL BEAMS	FACTORY PRIMED; SEE STRUCTURAL			
2	GALV. SHEET METAL CAP FLASHING	-	13	STEEL GABLE TRUSS	FACTORY PRIMED; SEE STRUCTURAL			
3	HOLLOW METAL DOOR & FRAME	FACTORY PRIMED AT (N) DOORS	14	SHINGLE SIDING	FIBER CEMENT, PAINTED			
4	STEEL TRELLIS/HEADER	FACTORY PRIMED; SEE STRUCTURAL	15	ORNAMENTAL IRON CROSS	-			
5	CONCRETE ROOF TILE	EAGLE PONDEROSA FLAT TILE, COLOR BLEND AS SELECTED BY ARCHITECT; O/ 40 LB. SATURATED UNDERLAYMENT	16	EXPOSED STEEL RAFTER TAILS	FACTORY PRIMED; SEE STRUCTURAL			
6	EXPOSED CONCRETE	SACK TO SMOOTH FINISH	17	STEEL CORBEL SUPPORTS	FACTORY PRIMED; SEE STRUCTURAL			
7	EXT. CEM. PLASTER O/ PLYND. SUBSTRATE O/ WOOD STUDS	INTEGRAL COLOR, SMOOTH FINISH; AIR BARRIER (TYVEK SYSTEM & SLIP SHEET); ACRYLIC FINISH COAT	18	ROLL-UP SERVICE DOOR	FACTORY PRIMED AT (N) DOOR; CHAIN HOIST			
8	DECORATIVE STEEL BARS	-	19	ALUMINUM FOLDING DOOR SYSTEM	-			
9	BRICK CAP	-	20	COMPOSITE WOOD TRIM	-			
10	CULTURED STONE VENEER	-						
11	MOULDED FASCIA & TRIM, ACRYLIC FINISH COAT O/ FOAM SHAPED TRIM	PAINTED O/ SMOOTH ACRYLIC FINISH COAT						

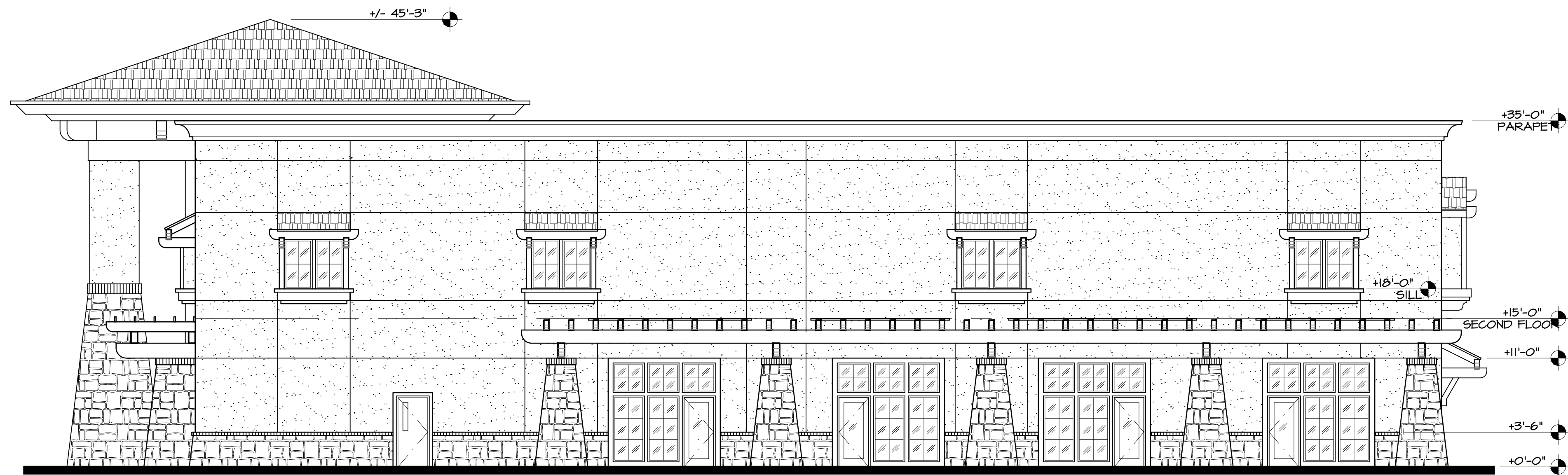
- NOTES:
- ALL SHEET METAL FLASHING TO BE MIN 24 GA, UNLESS OTHERWISE INDICATED.
 - SEE REFLECTED CEILING PLANS FOR SOFFIT MATERIALS.
 - PROVIDE EXPANSION JOINTS AT EACH FLOOR LINE, TYP.; NOT SHOWN FOR CLARITY
 - PROVIDE 6YP. SHTG. BELOW ALL EXT. CEMENT PLASTER AT ALL VERT. SURFACES, NO 6YP. SHTG. REQD. AT HORIZ. SURFACES (SOFFITS) UNLESS OTHERWISE INDICATED; SEE SECTIONS AND DETAILS FOR LOCATIONS WHERE REQD.
 - FOR TYPICAL PLASTER ACCESSORIES, SEE DETAIL 17/A907
 - FOR TYPICAL SEALANT JOINTS, SEE DETAIL 18/A907
 - FOR FLASHING AROUND BOX PENETRATIONS AT PLASTER, SEE DETAIL 4/A915
 - ALL EXPOSED STEEL WELDS TO MEET NOMMA VOLUNTARY JOINT FINISH STANDARD FINISH NO. 1, UNLESS OTHERWISE INDICATED.
 - ANTI-GRAFFITI COATINGS TO BE APPLIED TO PLASTER, STONE, CONCRETE, & BRICK, BELOW FIRST HORIZ. JOINT (1/15'-0"), AND BELOW SOFFIT ALONG EAST SIDE (1/1'-0"-6").
APPLIED CONT. AROUND ENTIRE BUILDING. NO ANTI-GRAFFITI COATING REQD. AT COURTYARD.



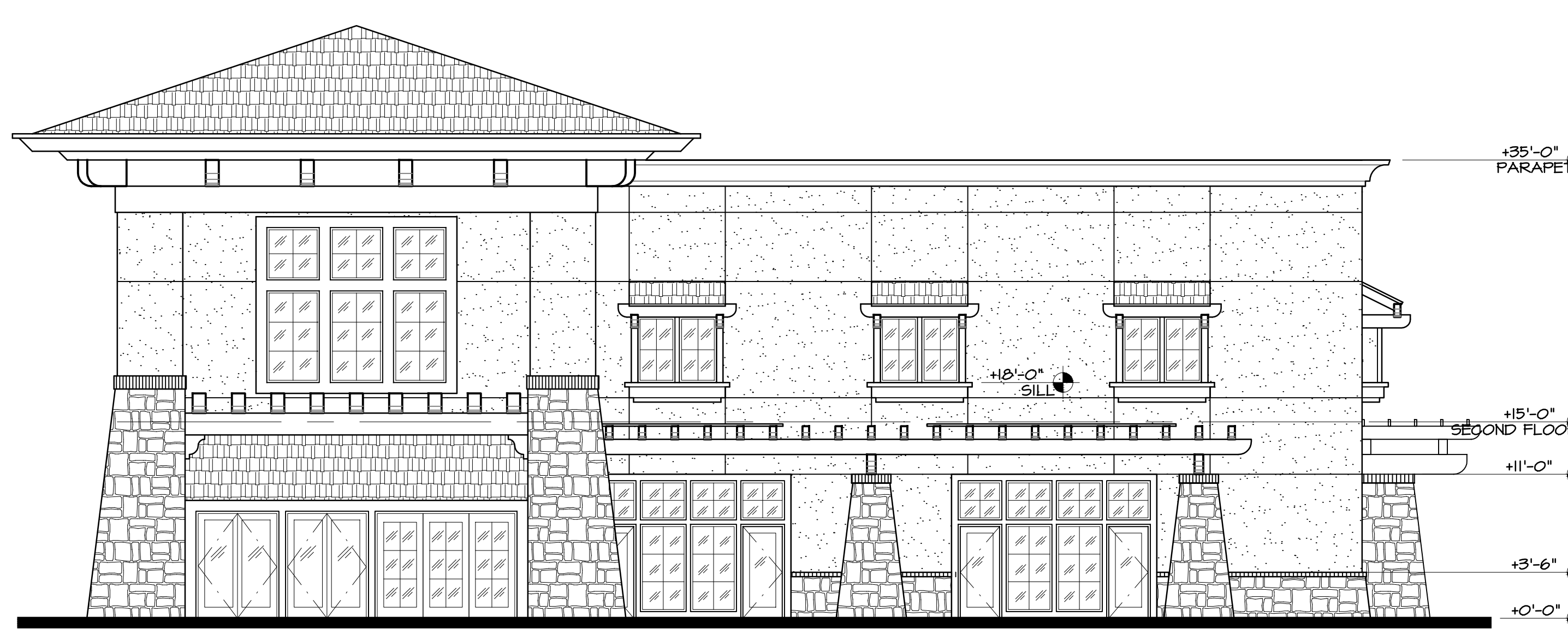
A SUNDAY SCHOOL - NORTH ELEVATION



B SUNDAY SCHOOL - EAST ELEVATION



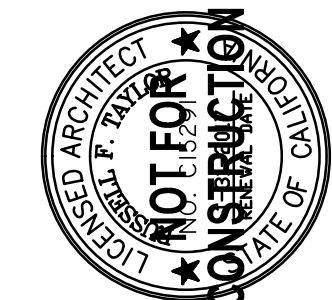
C SUNDAY SCHOOL - SOUTH ELEVATION



D SUNDAY SCHOOL - WEST ELEVATION

SUNDAY SCHOOL EXTERIOR ELEVATIONS

SCALE: 1/8" = 1'-0"



DESCRIPTION	CUP SUBMITTAL
DATE	1/25/2016
MARK	-

PROPOSED CHURCH CAMPUS:
GRACE CHURCH OF THE VALLEY
HIGHWAY 99 & 18TH AVENUE
KINGSBURG, CA

SUNDAY SCHOOL EXTERIOR ELEVATIONS

The Taylor Group expressly warrants that the drawings, specifications, and other documents prepared by it for the project are, to the best of its knowledge and belief, true and correct, and that it has not been negligent in its preparation.

PROJECT NO.
13-012.00

DRAWING
A500

www.tgarchitects.com