



LEGACY

Living Life Backwards

PSALM 127:1

*Unless the Lord builds the house,
the builders labor in vain.*

HARVEST FELLOWSHIP
hfpc.org/legacy

PASTOR

Dear Friends,

We are involved in some of the most exciting days in the history of Harvest Fellowship. Our efforts in these days will direct the future ministry and mission of our church. ***Our Generosity Initiative—Legacy: Living Life Backwards— is underway. The challenge before us is great, but we are not alone.*** We have each other and we have the presence and love of Jesus Christ.

As your pastor, I strongly encourage each of you to begin your participation in the initiative in three ways: ***Pray, Study, and Worship.*** Enclosed in this packet you will find several items to help you get started. Please take a few moments to familiarize yourself with these resources.

Will you commit to pray daily? There is great power when we join together in asking God to use and bless our efforts as a part of His church family. I believe we will see the miraculous presence of God through our prayers during this initiative. I especially encourage you to join us for corporate prayer in our worship services, prayer walks around the future ministry facility, and special prayer and praise night. Let us together boldly approach the throne of grace, that we may receive mercy and find grace to help in time of need (Heb. 4:16).

Will you commit to a five-week study? Our Sunday morning series on the book of Ecclesiastes will focus on learning to live life backwards from the two realities of death and our eternal inheritance in Christ. During that time, I challenge you,

R LETTER

if you are not already, to join a small group focused on responding to the themes in Ecclesiastes. Similarly, I encourage you to pick up a copy of the “Counter Culture Stewardship” to use in your personal devotions.

Will you celebrate what God is doing? God is at work! The Lord has truly blessed us with an intergenerational church. In the past few years God has brought young families and seasoned saints into our fellowship. One generation is commending the mighty acts of the Lord to the next. My prayer as you see the vision, the floor plan of the new ministry facility, and the different ways you can participate in this initiative, the Lord will enlarge your heart for those God has already brought and those who are not yet here.

Each and everyone’s participation is important to us, as the Harvest family joins together in seeking to fulfill Christ’s calling now and for generations to come.

For His Glory,
Pastor Barry



Living Life Backwards

Scripture invites us to “number our days” so that we may gain a heart of wisdom. Ecclesiastes teaches us to live life backwards — to begin with the end in mind. When we remember that our lives are finite, we learn to invest in what truly matters. The gospel deepens this perspective: Christ has secured for us an eternal inheritance that cannot perish or fade. Because our future is certain, our present can be marked by faith, courage, and generosity.

Legacy is not simply the theme of an initiative. It is an invitation to consider the kind of future we are preparing for the next generation. It is an opportunity to align our lives with the reality of eternity—to let the promises of God shape the way we use our time, our resources, and our relationships. We are not building for ourselves alone. We are planting seeds that, by God’s grace, will bear fruit long after our own part in the story is complete.

PSALM 127:1

*Unless the Lord builds the house,
the builders labor in vain.*



D PURPOSE



A Vision Rooted in God's Faithfulness

For many years, God has used this church family to form deep relationships, nurture children in the gospel, and welcome neighbors into a community shaped by Christ. As ministries grow and new families arrive, we have reached the limits of our current space. The Legacy Initiative is an opportunity to create room for the next generation—a place where worship, discipleship, and community can flourish for decades to come.

Our vision is not simply to construct a building, but to strengthen the ministry God has entrusted to us. A permanent, welcoming space will allow us to provide safe classrooms for children, create a foyer that encourages connection, support volunteers with adequate space, and expand our capacity to welcome new families and neighbors.

We believe God has positioned us for this moment. The Legacy Initiative is our opportunity to respond with faith — to build with the next generation in view, trusting that the Lord will use this space to shape lives, strengthen families, and proclaim the gospel for years to come. Ultimately, generosity is the Spirit's work in us. Our task is simply to pray, listen, and follow where He leads.

PROJECT C

Why We Need to Build Now

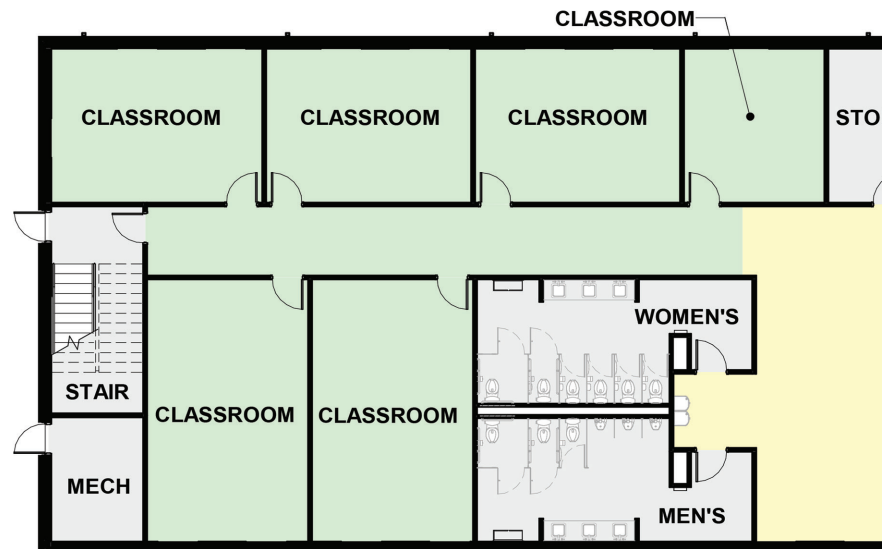
God has blessed our church with steady, meaningful growth. Children fill our ministries each week. Students gather for discipleship. Families linger after worship to encourage one another. Ministry teams meet throughout the week to plan, pray, and serve. Our people have made the most of every square foot available to us.

But as our ministries have expanded, the limitations of our current arrangement have become increasingly clear. Children's classrooms are spread across multiple buildings. Some spaces were never intended for long term ministry use. Volunteers regularly adapt rooms to fit different needs. Families move between areas that are separated by distance and weather. These realities reflect years of creativity and faithfulness—but they also show that our current setup is no longer sustainable for the ministry God is growing here.

This is not about comfort or convenience. It's about stewardship and mission.

Our current layout makes it difficult to welcome newcomers, support families, and create an environment that encourages fellowship. Children's ministry needs rooms that are safe, accessible, and designed for their age groups. Volunteers need spaces that allow them to serve without constant setup and teardown. Our congregation needs a building that supports the rhythms of worship, discipleship, and community life.

These realities are not frustrations to complain about—they are invitations. They show us where God is calling us to prepare for the future and to make room for the people He is bringing.

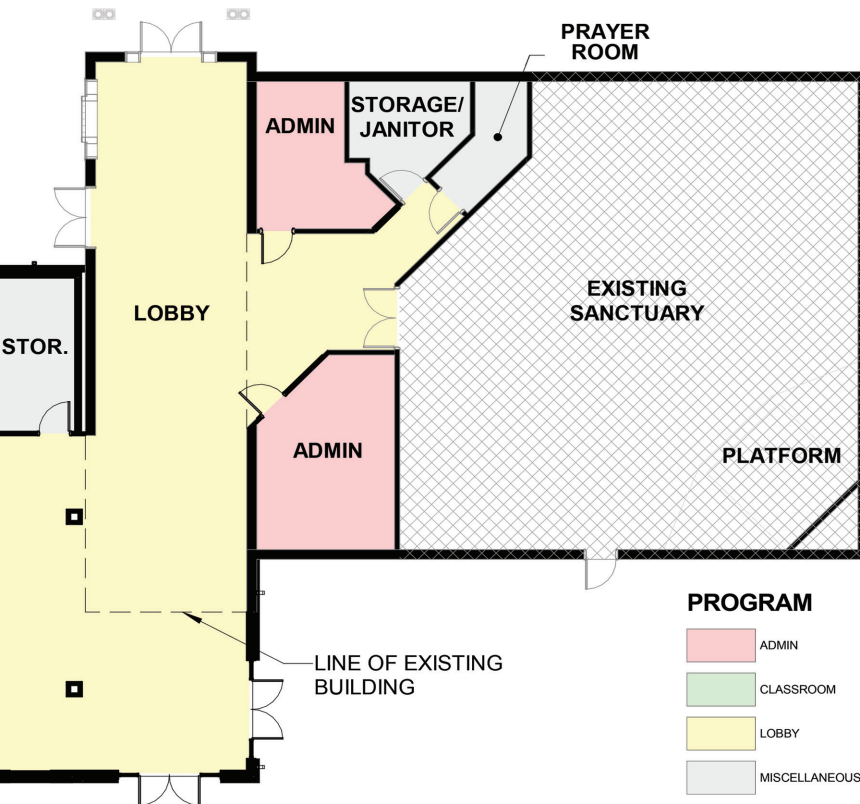


OVERVIEW

What the Legacy Initiative Will Build

The Legacy Initiative focuses on addressing our most immediate ministry needs and creating a foundation for future growth. While architectural plans will continue to develop, this project includes:

- **A redesigned foyer** that improves flow, hospitality, and connection
- **Dedicated children's classrooms** that are safe, quiet, and purpose built
- **A relocated nursery** positioned to better support families and reduce distractions
- **Flexible ministry rooms** for Bible studies, youth gatherings, and mid week discipleship
- **Improved circulation and layout** that supports families and newcomers
- **Additional storage space** for ministry materials
- **A more coherent, functional building footprint** that brings ministry back under one roof



This project is about creating a building that supports the ministry God has already given us—and prepares us to serve those who will come after us.

FREQUENTLY ASKED

Why are we doing the Legacy Initiative now?

Our ministries have grown, and our current arrangement of classrooms and meeting spaces is no longer sustainable. The Legacy Initiative allows us to create a building that supports the ministry God has already given us and prepares us to serve those who will come after us.

How much will the project cost?

We are in the process of obtaining a detailed cost estimate based on the architectural plans; however, we expect the cost of this project to be around \$2.5M. More details will be shared as they become available.

When will we be asked to make our commitment?

Everyone at our church will be asked to consider how they might participate in the campaign prayerfully. Our commitments will be received in a special service on March 29, 2026.

What will happen to the classroom trailer annex and the Duplex?

The Annex will be replaced by this project, but we will retain the Duplex to provide office and ministry meeting spaces during construction. Afterwards we will primarily use the Duplex to support ministry through its kitchen and storage spaces.

Are campaign gifts over and above my usual giving?

Yes! They must be! Our current ministry expenses must continue to be met by your faithful support through our Sunday offerings. These additional gifts will enable us to achieve the Legacy Initiative's special goals.

What is the length of time for campaign commitments?

The campaign commitments will run for three years, from April 2026 to March 2029.

ASKED QUESTIONS

How long will construction take?

Timelines depend on permitting, contractor availability, and final architectural plans. We will communicate updates as soon as they are available.

Will ministries be disrupted during construction?

We will do everything we can to minimize disruption. Some adjustments may be necessary, but we will plan carefully to keep ministry strong throughout the process.

Can my gift involve stocks or other assets in addition to cash?

Yes, see Karen Metz for details on how to give non-cash gifts of any kind.

How can I participate if I'm not able to give financially?

Everyone can participate. You can pray, serve, encourage, and walk with us through this season. The Legacy Initiative is about the whole church family growing in faith together.

How should I pray during this season?

Pray for unity, wisdom, provision, and a deepening trust in the Lord. Pray for the discipleship of current and future generations who will benefit from this space. Pray that God would use this moment to strengthen our church for years to come.

GENEROSITY JOURNEY

The Generosity Journey is a tool designed to help you move money from being an idol to money being a tool for God's kingdom. The Journey focuses on the condition of our hearts further transforming us into the likeness of Christ. Each step of the journey represents growth in a lifestyle of generosity and sacrifice. These are not steps you slowly ascend to get to God, but rather a way to evaluate your growth in generosity. The Apostle Paul encourages us to grow in every facet of our walk with Christ, including the grace of giving. (2 Corinthians 8:7)

Consistent Giver

This type of giver is someone who decides to give something and to give it on a consistent basis. This often requires planning, and sometimes this might be a reason for someone to set up recurring gifts online or to become disciplined in giving through the weekly offering.

Initial Giver

This type of giver is someone who decides to give for the first time. This is someone who decides to give something and trust God and the leaders of the church with this gift.





Sacrificial Giver

This type of giver begins to ask the question, “Am I giving in a way that changes me? Am I giving in a way that causes my lifestyle to be different to reflect the transformation Christ is making in me?” A Sacrificial Giver’s commitment to giving actually governs the rest of his/ her lifestyle. A Sacrificial Giver has a giving commitment that is “larger than their current situation” so that they have to adjust the rest of their expenditures to meet that commitment.

Intentional Giver

This type of giver begins asking the question, “Why am I giving more to my cell phone bill than I am giving to God? Should I be giving to God more than I give for my mortgage each month?” This giver starts to make their giving an intentional choice that reflects on how they feel about it in relation to other things they spend their money on.

Lifetime Giver

A Lifetime giver is no longer asking the question, “God, how much are you asking me to give?” A Lifetime Giver is asking the question, “God how much are you asking me to keep?” They ask this so that they can release the rest into Kingdom purposes. Much like a Sacrificial Giver makes a commitment that will govern his/ her monthly and annual decisions, a Lifetime giver makes a lifetime or longterm giving commitment that governs his/ her larger decisions like homes, cars, investments, and the likes.

THE GIVING PROCESS

You will be receiving a Commitment Card in this packet [pictured on opposite page].

The giving period for the **LEGACY** initiative is April 2026 through March 2029.

Commitment Cards will be received on **Commitment Sunday, March 29, 2026.**

Commitments Can Look Very Different:

- A lump sum while the stock market is at record levels
- Using funds from required minimum distributions each year out of retirement accounts
- End-of-the-year donations from once-a-year compensation
- Or a monthly commitment

This chart breaks down typical commitments that can be made over a 3-year period.

Monthly Pledge	Yearly Pledge	3-Year Pledge Total
6,389	76,667	230,000
4,000	48,000	144,000
2,778	33,333	100,000
2,000	24,000	72,000
1,667	20,000	60,000
1,333	16,000	48,000
1,000	12,000	36,000
667	8,000	24,000
500	6,000	18,000
333	4,000	12,000
250	3,000	9,000
125	1,500	4,500

[Approximately]

[Approximately]



COMMITMENT CARD

In faith and dependence on God's grace, I/we rejoice at the opportunity to participate in the Legacy Initiative beginning in April 2026.

Name(s) _____

Address _____

Email(s) _____

My/Our Commitment Is:

After prayerful consideration, I/we agree to support our church's Legacy Initiative for the next 3 years with my/our financial contribution.

At this time I/we cannot contribute, but will pray for the Legacy Initiative.

\$ _____	3-Year Total
----------	---------------------

I intend to contribute:

\$ _____ **Monthly**

\$ _____ **Yearly**

\$ _____ **Other**

I intend to give through a donor advised fund, RMD, or other non-personal account

Note: This is a statement of intent and may be altered as circumstances warrant.

HARVEST FELLOWSHIP

PRAY

Earnestly seek the Lord's guidance in this important matter.

ENGAGE

Attend a small group and explore what it means to "Live Life Backwards" with your brothers and sisters.

GIVE

Make a three-year pledge. A small gift, given regularly, can add up to a substantial donation over time. You can give monthly, quarterly, annually, or all at once, depending on your situation. Please contact Karen Metz if you would like to make a gift of an appreciated asset (stocks, bonds, real estate, LLC, bitcoin, or other valuable property).

You don't need to pledge to give to the Legacy Generosity Initiative, but your pledge helps us to plan as we move into the building phase of this effort.

Typical commitments made over a 3-year period:

Monthly Pledge	Yearly Pledge	3-Year Pledge Total
6,389	76,667	230,000
4,000	48,000	144,000
2,778	33,333	100,000
2,000	24,000	72,000
1,667	20,000	60,000
1,333	16,000	48,000
1,000	12,000	36,000
667	8,000	24,000
500	6,000	18,000
333	4,000	12,000
250	3,000	9,000
125	1,500	4,500

This giving schedule is for quick calculation of monthly, yearly and three-year giving. No one should feel confined to this schedule.

Harvest Fellowship, PCA

9905 H G Trueman Road, Lusby MD 20657
(410) 326-0033 • hfpc.org

JOIN A SMALL GROUP

The Legacy Initiative is more than a building project—it is a spiritual journey for our whole church family. One of the best ways to walk through this season together is by joining a small group. For four weeks, our groups will focus on Scripture, prayer, and meaningful conversation about what it means to live with a legacy mindset.

If you are not currently part of a small group, we invite you to join one during this special season. These gatherings are simple and welcoming. You don't need to prepare anything or know anyone ahead of time. Just come, listen, share as you feel comfortable, and grow with us.

Our hope is that every person in our church will have a place to reflect, ask questions, and seek the Lord together. We believe God will use these conversations to deepen our faith, strengthen our relationships, and unite us as we follow Him into the future.



FAITHFULNESS IN THIS MOMENT

We do not know everything the future holds, but we do know what God has placed in front of us today. The Legacy Initiative is our opportunity to respond with wisdom and faith—to build a space that serves our children, strengthens our ministries, and welcomes our neighbors.

We are not undertaking this project in our own strength. We are trusting the Lord to provide what we need for this season, and to guide us as we take the next step. Our prayer is simple: that God would use this moment to deepen our faith, unify our church, and prepare us for the work He has yet to do.

We invite you to pray, to engage, and to consider how the Lord may be calling you to participate in the Legacy Initiative.

IMPORTANT DATES

Reflection Prayer & Praise

March 1

Advanced Commitment & Vision-Casting Prayer

March 15

Commitment & Celebration Sunday

March 29

Announcement Sunday

April 12





YOU WILL BE *blessed*
WHEN YOU COME IN AND
blessed WHEN YOU GO OUT

Deuteronomy 28:6

Harvest Fellowship, PCA

9905 H G Trueman Road, Lusby MD 20657

(410) 326-0033 • hfpc.org