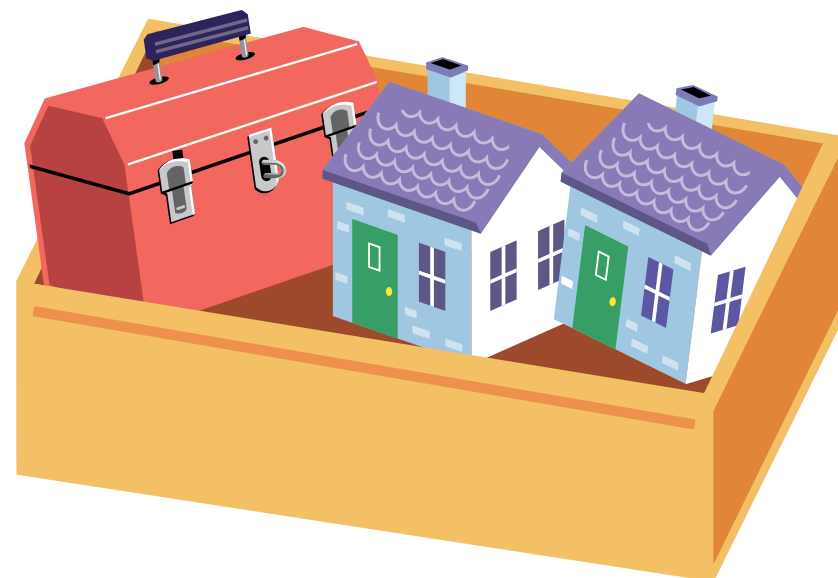
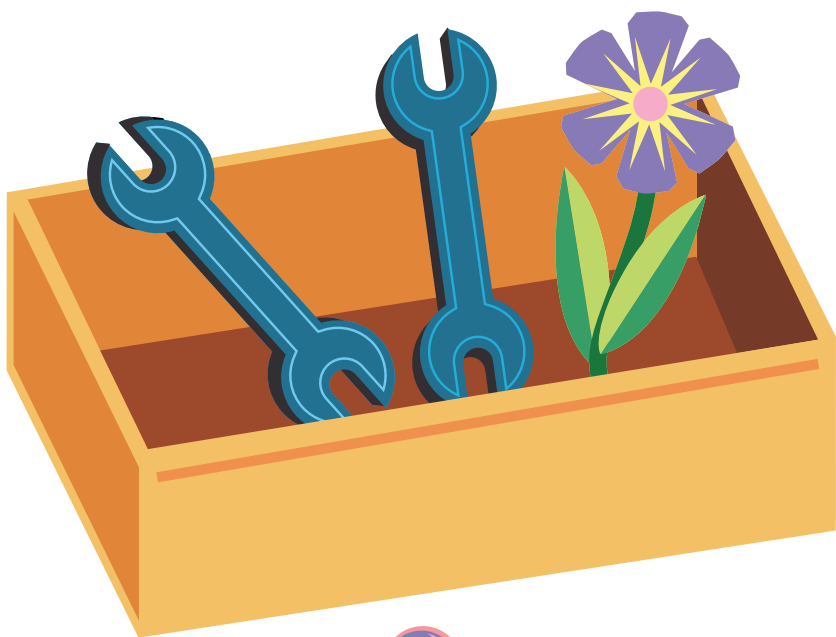


# What Doesn't Belong

**INSTRUCTIONS:** Draw a line through what is different in each box.



NAME: \_\_\_\_\_



## People Rebel Against God

### BIBLE STORY SUMMARY:

- God had told Noah's family to spread out and fill the earth, but they stayed in one place.
- They decided to build a tower so others would think they were great instead of God.
- God mixed up their words, so they had to stop building.
- God made them spread out all over the earth.

### CHRIST CONNECTION:

People disobeyed God, so God mixed up their words and spread the people over the earth. One day, Jesus will bring His people back together. People will worship Him together.

### KEY PASSAGE PHRASE:

Everyone makes wrong choices.  
Romans 3:23

### BIG PICTURE QUESTION:

What does it mean to sin? We sin when we disobey God.