

MONTHLY PRAYER MEETINGS
EVERY 4TH SUNDAY
8:30 AM, 11 AM



8:30 AM in the Teaching Room (Second Floor)
11 AM in the Main Sanctuary (First Floor, by the stairs)

living hope

COMMUNITY CHURCH

November 17, 2024

LIVING HOPE COMMUNITY CHURCH

WORSHIP SERVICES

8:00 AM | 9:30AM | 11:30AM

November 17, 2024

PRELUDE

CALL TO WORSHIP

Albert Kae

SONGS OF PRAISE

Robby Jung

SCRIPTURE READING

Eunice Youm

MESSAGE

The King of My Heart, Part 7

“When Yahweh Chooses a Man”

1 Samuel 16:1-13

John Kim

BAPTISM

SONGS OF REFLECTION AND OFFERING

CLOSING PRAYER

Pastor Ben Tabbal

living hope

COMMUNITY CHURCH

November 17, 2024

THANKSGIVING

Join Us on Nov 24th
for Sunday Worship & Lunch

Services at 8am, 9:30am & 11:30am
Lunch after the 9:30 & 11:30 services

 LIVING HOPE

LH BABIES VOLUNTEERS NEEDED!

LH BABIES IS IN NEED OF VOLUNTEERS
TO HELP OUT IN THE NURSERY
DURING 9:30 AM SERVICE!

IF INTERESTED, PLEASE EMAIL
LHCC.BABIES@LIVINGHOPECC.ORG

ANNOUNCEMENTS

1. Guest Speaker– Pastor John Kim | Today

We will be closing the King of My Heart (1 Samuel 1-16) sermon series with a message from a guest speaker, Pastor John Kim! Pastor John is currently the senior pastor at Lighthouse Bible Church Los Angeles. He has been married to Angela since 1984 and has four daughters. He also has two grandkids, Benny and JJ. Pastor John has been in pastoral ministry since 1987, planting Lighthouse San Diego, Lighthouse San Jose, and Lighthouse LA. Pastor John also serves as the Director of Pastoral Care and Asian American Ministries at the Master's Fellowship. Fun fact - Pastor Steve Chang was John's roommate at Alpha Gamma Omega/UCLA in 1984 and has known him for 40 years!

2. Thanksgiving Sunday Worship & Lunch | Nov 24

Invite your friends and family to join us for Thanksgiving Sunday Worship and fellowship over our Thanksgiving Meal ~ Living Hope style! Our services are at 8AM, 9:30AM & 11:30AM. Lunch will be served after the 9:30AM & 11:30AM services. So in preparation for Thanksgiving Sunday, we are also seeking volunteers for directing parking, serving food, and helping with the final take down. Let's come together to serve and bless our church family! Please sign up through [THIS LINK](#).

3. The Next Chapter Prayer Meeting | Nov 24

We are hosting monthly prayer opportunities during this time of transition: every 4th Sunday of the Month at 8:30 AM in the teaching room (second floor) and 11 AM in the main sanctuary (first floor, by the stairs). These meetings are in addition to the monthly Prayer Chapel (first Tuesday nights). Please come gather to pray for the next chapter of Living Hope!

4. Prime Christmas | Dec 8

Calling all single adults to celebrate the baby Jesus together! Sunday, December 8 at 5pm to 7pm at the Porch. Prime Christmas is the final event of the year, one that is filled with food, fun, prizes, laughter, and more! Ugly sweater is recommended but not required. \$15 per person with raffle tickets for \$1 each. Register TODAY! [REGISTER FOR PRIME CHRISTMAS 2024](#)

5. Neighbor's Pantry | Dec 14

Every second Saturday of the month, our church hosts a no-cost food pantry for anyone in our area. Neighbor's Pantry is an opportunity for us as a church family to share the love of Christ with our neighbors. If you're looking to get involved or have any questions, please contact Pastor Albert Kae (albert.kae@livinghopecc.org).

6. LH Babies Volunteer Request | Nov+

LH Babies is looking for more volunteers! If you are interested in serving in our nursery during 9:30 AM service, please email lhcc.babies@livinghopecc.org.



living hope

COMMUNITY CHURCH

November 17, 2024

SERMON NOTES

The King of My Heart, Part 7
“When Yahweh Chooses a Man”

1 Samuel 16:1-13

John Kim

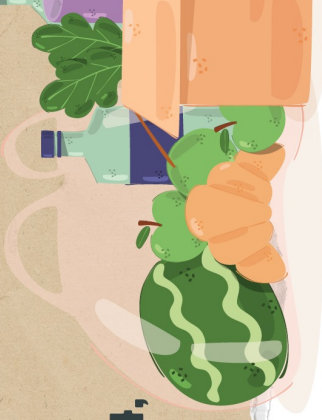


NO-COST FOOD PANTRY

Come and receive free groceries.
No residency requirement.



JULY 13, AUG. 10, SEPT. 14,
OCT. 12, NOV. 9, DEC. 14



EARN MORE ON SOCIAL   @THENEIGHBORSPANTRY

living hope

COMMUNITY CHURCH

November 17, 2024

Cell Group Discussion Questions

- Why is it easy to choose man-centered ways of thinking when evaluating potential leaders? What does it mean that God rejects someone and why would He reject someone?
- Why do you think someone as godly and experienced as Samuel was corrected by God for the way he assessed Eliab, the son of Jesse, as a future king?
- What does it mean that God looks at the heart instead of the outward appearance? What are some of the key components of the heart that God is looking for?
- In what other ways do you see the application of the principle drawn from this text have a role in choosing someone?