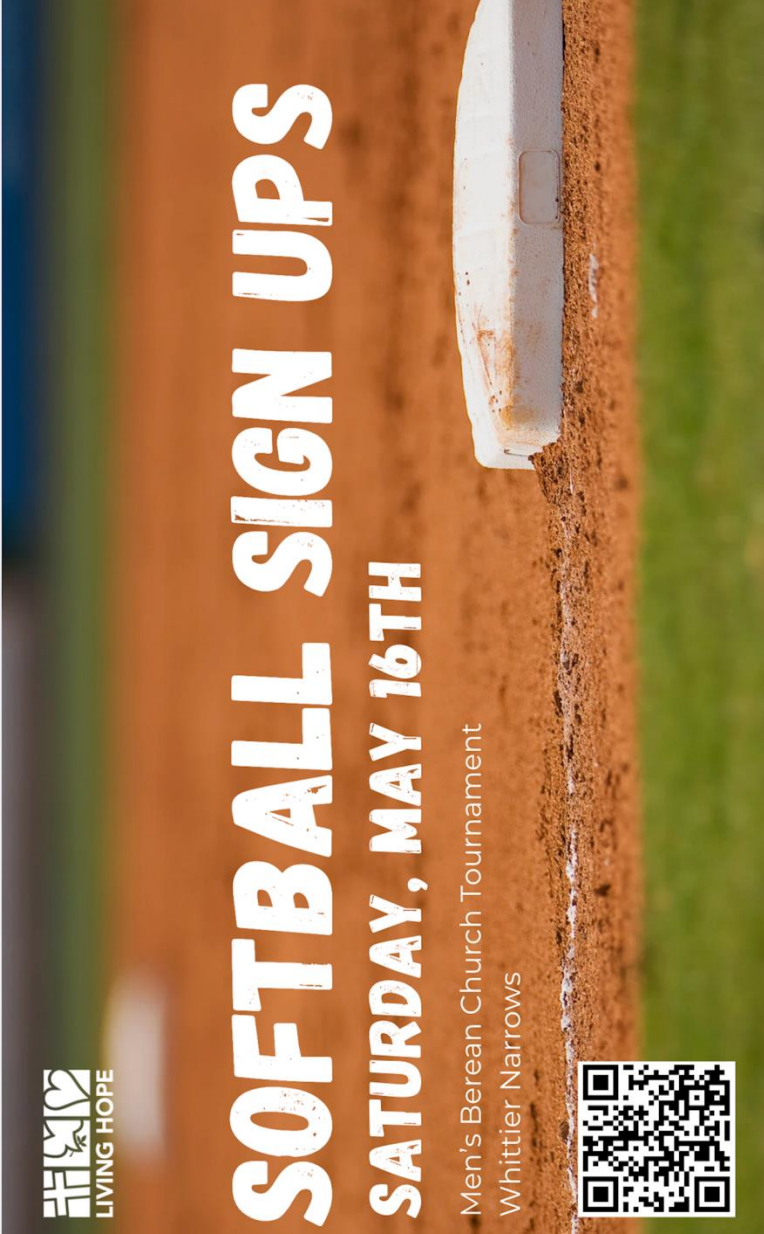




SOFTBALL SIGN UPS

SATURDAY, MAY 16TH

Men's Berean Church Tournament
Whittier Narrows



MARCH 30-APRIL 2
5PM-9PM

passion week

PRAYER ROOM EXPERIENCE
PRE-REGISTER TODAY

APRIL 3
7PM-8PM

good friday

KIDS & TOTS
SPECIAL ACTIVITIES

APRIL 5
8AM / 9:30AM / 11:30AM

easter sunday

ALL-CHURCH LUNCH
AFTER THE 9:30AM & 11:30AM SERVICES

KIDS & TOTS
SPECIAL ACTIVITIES

living hope

COMMUNITY CHURCH

March 15, 2026

LIVING HOPE COMMUNITY CHURCH

WORSHIP SERVICES

8:00 AM | 9:30AM | 11:30AM

March 15, 2026

PRELUDE

CALL TO WORSHIP

Pastor Ben Tabbal

SONGS OF PRAISE

Evan Lee

SCRIPTURE READING

Seong Oh

MESSAGE

A Prayer Shaped Life, Part 5

“The Crisis of Prayer”

2 Chronicles 20:1-4

Jin Ahn

CLOSING PRAYER

Pastor Jeff Hyun

**contentment
without
complacency**

Sp. Retreat | March 20-22 | Philippians 4:11-13

lh college
university

Union Rescue Mission

**PASSION WEEK
OUTREACH TRIP**

APR 2ND - APR 3RD

Open to Prime & Homebuilders



living hope

COMMUNITY CHURCH

March 15, 2026

ANNOUNCEMENTS

1. Passion Week 2026

Passion Week is a sacred time when we remember the love of Jesus shown through His death and celebrate the hope of His resurrection. Join us at Living Hope as we remember the story of the cross and celebrate the risen Christ together throughout Passion Week (3/29 to 4/5).

3/29 (Sun) - Palm Sunday services 8am, 9:30am, 11:30am + PROJECT: People of Prayer

3/30 (Mon) to 4/2 (Thu) - [Passion Week Prayer Room Experience](#) 6-9pm

4/3 (Fri) – Good Friday service at 7pm

4/5 (Sun) – Easter Sunday services at 8am, 9:30am, 11:30am; Kids Festivities after 9:30am service; Lunch served after 9:30am & 11:30am services

[Click here](#) to learn more about Easter Season at Living Hope!

2. LH College Spring Retreat | March 20-22

COLLEGIANS!!! Join us for our 2026 Spring Retreat "CONTENTMENT WITHOUT COMPLACENCY". We will be spending our time connecting with God, bonding with our community, and learning how to be confident that what God has provided is more than enough for us to be courageous for our future! [Click here](#) to register!

3. SALT Ministry Kick Off | March 21

SALT Ministry is having a kick off dinner on Saturday, March 21 from 5-8pm. \$15 per person (Dinner will be provided). Please RSVP by March 16. [Click here](#) to register!

4. You Matter – Men's Breakfast | March 28

Join us on Saturday, March 28 from 8-10am, as we kick off the 1st Men's Breakfast of the year! Entry fee of \$5. [Click here](#) to register!

5. Passion Week Outreach Trip | April 2-3

Every year, we have an opportunity as a church to do an outreach during Passion Week. This year, we will be spending two days at Union Rescue Mission: helping out on Skid Row, and serving one of the recovery programs for men, women and children. The trip will be on April 2-3, from morning through afternoon, with no overnight stay. Please fill the form if you're interested. [Click here](#) to register!

6. Living Hope Men's Softball Team | May 16

Living Hope Sports Ministry will be fielding a couple teams to sign up and participate in the Berean Softball Tournament.

To learn more about more additional things happening in the life of our church, please visit <https://www.livinghopecc.org/>.

living hope

COMMUNITY CHURCH

March 15, 2026

SERMON NOTES

A Prayer Shaped Life, Part 5

“The Crisis of Prayer”

2 Chronicles 20:1-4

Jin Ahn

PRAYER MUST BE THE PRIORITY OUR OF LIVES

#1 – Prayer is an opportunity to rely on God’s character:

2 Chronicles 20:5-12

#2 – Prayer is the doorway to experience God’s faithfulness:

2 Chronicles 20:15-22

#3 – Corporate prayer is the context where God’s power is revealed

2 Chronicles 20:1-23

Big Idea: We must be a people where prayer is our priority and our first response because it is through prayer that God reveals his faithfulness and builds up His people.



SALT MINISTRY
You rise the walls of the earth... You rise the light of the world.

KICK OFF

Saturday, March 21 2026, 5-8pm
Location: LHCC Porch
\$15 per person
RSVP by 3/16/2026

JOIN US FOR FOOD + FELLOWSHIP



Saturday, March 28 | 8-10am | LHCC Patio

MEN'S BREAKFAST



living hope

COMMUNITY CHURCH

March 15, 2026

CELL GROUP DISCUSSION QUESTIONS

Breaking the Ice:

- What are your instinctive reactions and behaviors when you have to navigate through moments of overwhelming stress or are experiencing a sense of panic?

Digging Deeper:

Point #1: Prayer is an opportunity to rely on God's character

- Read 2 Chronicles 20:1-4
 - Would you say that God's character is the number one thing you rely on throughout life? If yes, what are some things you do that help keep you relying on God. If not, what do you find yourself relying on more often and why?

Point #2: Prayer is the doorway to experience God's faithfulness

- Read 2 Chronicles 20:15-17
 - In this passage, though God says that he will fight and win for them, he also commands them to still go into the battlefield. Where is a "battlefield" of your life where you need to let God fight on but still need to show up at?
 - How do we people that can stay focused on just worshipping God while we're standing in the middle of a hectic, scary "battlefield"?

Point #3: Corporate prayer is the context where God's power is revealed

- Notice all throughout the passage the call to prayer and the power of prayer is experienced not in individual prayer but in corporate prayer
 - How can our people grow in our conviction and our evaluation of the importance and power of corporate prayer
 - What is something our group can collectively come together to pray as one body right now?

PRAYER PRACTICE FOR THE WEEK:

Assessing our prayer priority

This week's practice invites you to take inventory of how vital and how much of a priority prayer actually is in our lives

Step 1: De-compartmentalize

Most likely we have things we will pray for and things we will just do on our own without prayer. Identify what are the things you do on your own without prayer (work, certain problems, etc). Meditate to discern why you don't pray over these things? As you start to discern lift up these reasons to God in prayer

Step 2: How much do you trust?

There is a difference between believing in God and believing God. Both are very important and necessary, but oftentimes Christians believe in God (believing God exists), but do you believe God (accepting what he says as absolutely true). Oftentimes when you have something you don't pray intensely about, it means in your heart you don't believe God's input matters in it.

Meditate on this: where is an area of your life where you don't trust or don't believe in God's goodness and faithfulness?

Step 3: Make time for Corporate Prayer

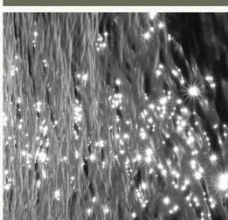
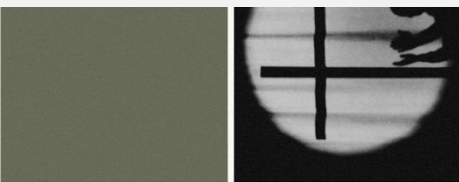
The crux of the passage from this sermon was that the power and potential of prayer was experienced not in individual prayer but in corporate prayer. Schedule time this week where you will meet with at least 2-3 other believers (in person or over phone/zoom) to pray together corporately, not just FOR each other, but WITH each other for the same heart. Praying out loud is encouraged

CALL TO ACTION: Sign Up for Passion Prayer Week

As we move toward Passion Week, you are invited to take a next step into corporate prayer by signing up for Passion Prayer Week. This will be a focused time for our church to gather, pray, and depend on God together as we remember Christ's journey to the cross.

Sign Up Link:

<https://livinghopecc.cbcchurch.com/goto/forms/257/responses/new>



A Prayer Shaped Life