

GIVE.GROW.GO. >>>

GIVE TO HELP MHBC GROW AND GO FOR THE GLORY OF GOD

GROW

God is at work in MHBC--we are growing in maturity and in numbers (over 50% of our regularly attending members have joined in the last 4 years). We are quickly outgrowing our space. Beyond MHBC, central Texas is quickly growing with no signs of slowing. We desire to wisely steward what God has entrusted to us so that we would be a blessing to the people of MHBC now and in the future.

We believe God has providentially placed MHBC in South Belton, at the intersection of the busy I-35 corridor and a sea of houses and apartment complexes, in a quickly growing neighborhood with few churches.

Our Master Plan (see back) maximizes the property entrusted to us with these key features: 315 seat sanctuary, new nursery space, enhanced children's security, connects youth to main building, a clear main entrance for new people, and a central ministry hub.

KEY FEATURES



Clarify main entrance



Increase security for kids, youth, & nursery



Create central hub



Build 315 person sanctuary

GO

Because God has blessed us to be a blessing, alongside asking God to provide for our property needs, we are seeking to increase our fruitfulness in missions and outreach.

Here are some of the initiatives MHBC plans to implement:

- Meet needs in our community with new monthly outreaches
- Increase giving to reach unreached people groups
- Train the next generation of church leaders by utilizing the youth house for Pastoral Interns
- Multiply ourselves through church planting

GIVE

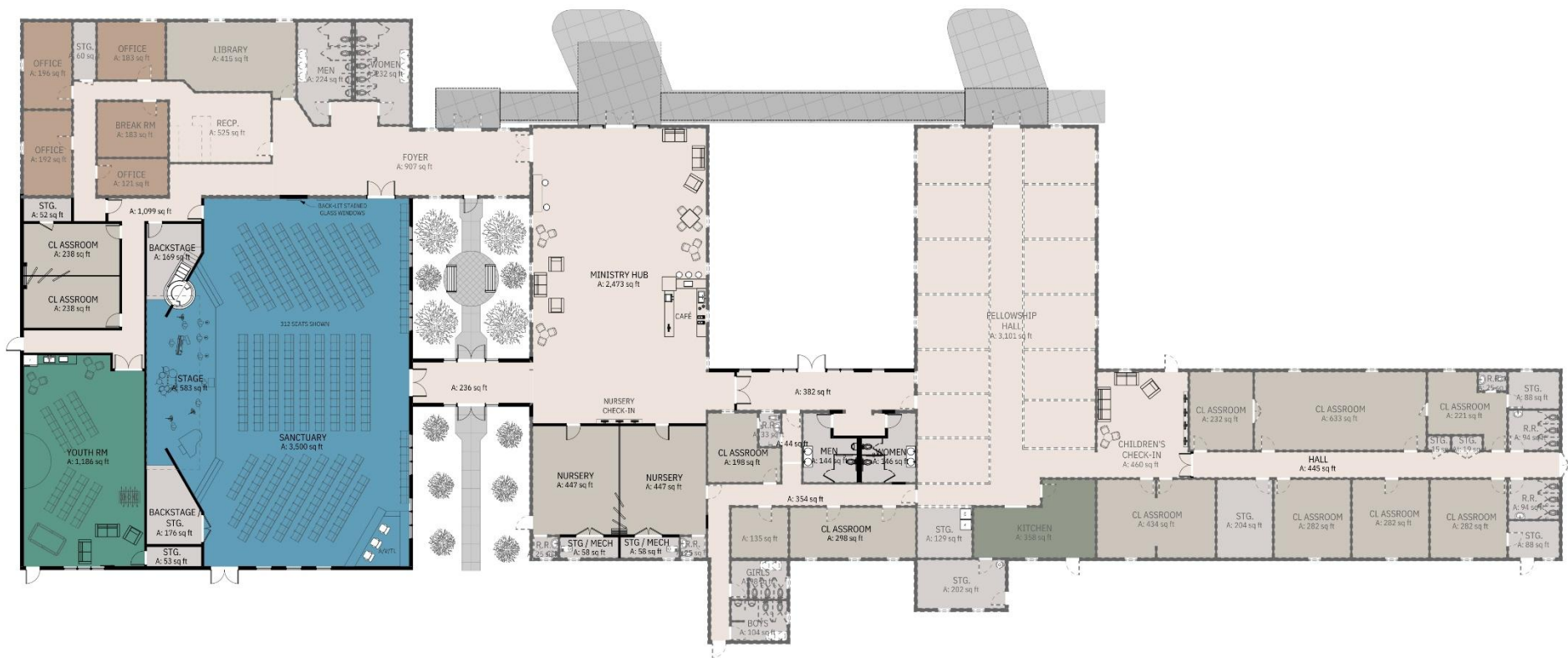
As we seek to raise \$500,000 over the next year, we are asking each church member to prayerfully consider what faithful, sacrificial giving looks like--in terms of one-time gifts and increased monthly giving.

Ways to give:

- By Cash/Check (in person or mail)
- Online (www.mhbcbelton.com/give)
- Investments (contact us for details)







FIRST FLOOR PLAN

EXISTING: 17,424 SF
 PROPOSED: 7,140 SF
 REMODEL: 3,330 SF



0' 20' 40' 60'











