



**FEBRUARY 2024**  
**CONGREGATIONAL**  
**MEETING**

SPRING RUN PRESBYTERIAN CHURCH

# OUR MISSION WHY DO WE EXIST?

to be an authentic, worshiping community  
proclaiming and embodying  
the gospel of Jesus Christ.



Since July 1, 2023

2

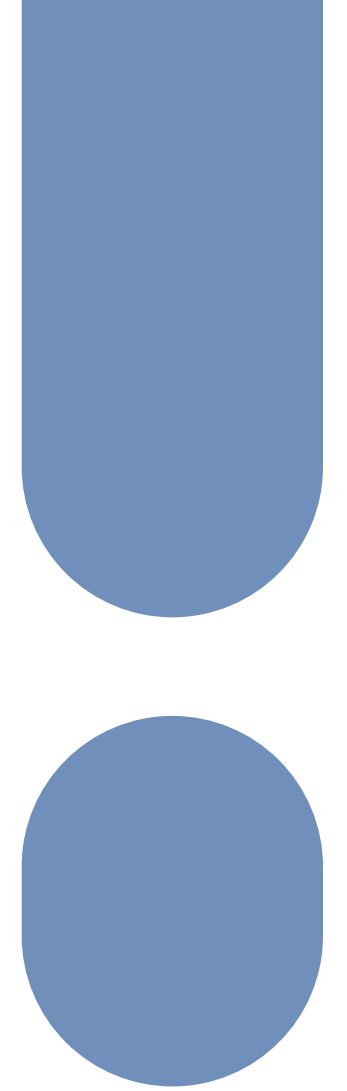
**BAPTISMS**

18

**NEW MEMBERS**

33

**SENT OUT**



Since July 1, 2023

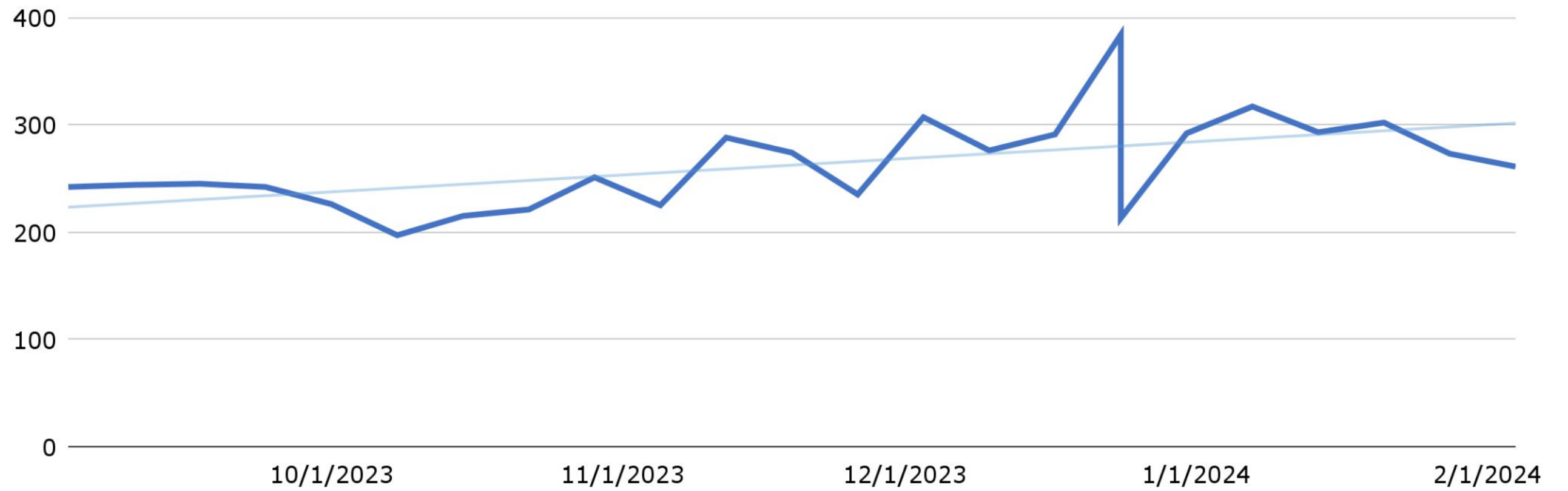
**130**

## **SUNDAY NEWCOMERS**

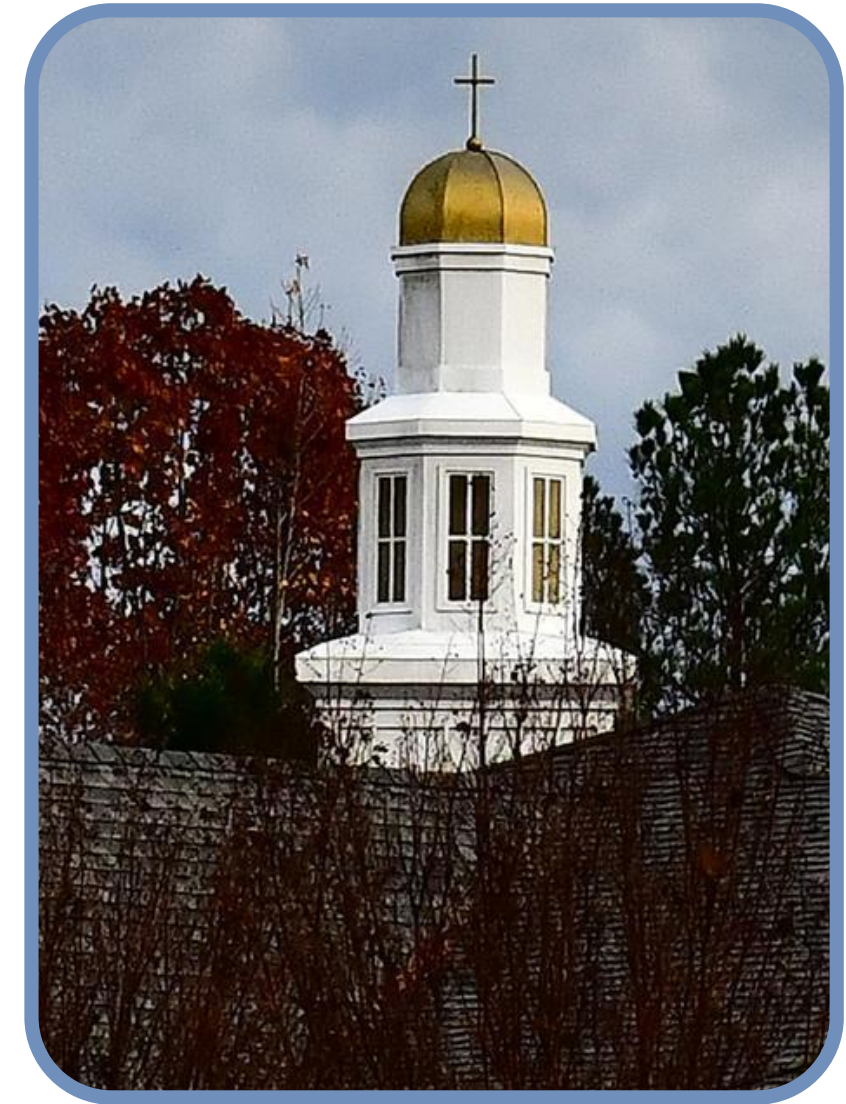
worship, sunday school, 345 +  
youth group

# CURRENT ATTENDANCE

since September 09, 2023



# CURRENT FINANCIALS



# FINANCIAL SUMMARY

through

December 31, 2023

	Actual	Budget	+/-
Giving	\$460,151	\$385,000	+\$75,151
Interest Income	\$11,145	\$6,000	+\$5,145
Rental Income	\$700	\$494	+\$206
Expenses	-\$412,375	-\$438,946	-\$26,571
Net Income/Loss	\$59,621	-\$47,452	



## CASH AND INVESTMENTS

as of

December 31, 2023

Cash & Investments:	
Operating Account	\$243,071
Deacons Account	\$8,776
Money Market Accounts	\$214,788
Investment Cash Account	\$51,886
US Treasury Bills - 1 Year	\$87,422
US Treasury Bills - 2 Year	\$238,830
US Treasury Bills - 3 Year	\$32,357
Undeposited Funds (online giving)	\$22,856
<b>Total Cash &amp; Investment Balances</b>	<b>\$899,986</b>





## GENERAL RESERVES

as of  
December 31, 2023

Total Cash & Investment Balances	\$899,986
Less Donor/Session Restricted Funds:	
Amelia Church Plant Fund	\$79,683
Church Plant Fund	\$76,923
Building Fund	\$100,000
Maintenance Accrual Fund	\$164,226
Missions & Mission Trip Fund	\$10,342
Deacons Fund	\$8,776
Education Fund	\$24,959
Speaker Fund	\$4,070
Staff Christmas Gift Fund	\$7,923
Ministry Event Asst. Fund	\$1,840
<b>Cash Available - General Reserves</b>	<b>\$421,244</b>



**CURRENT  
DEBT**

as of  
December 31, 2023

1<sup>st</sup> Mortgage balance  
as of December 31, 2023

**\$486,699**

Matures October 2029



# CHILDREN'S + YOUTH MINISTRY

# CHILDREN'S MINISTRY

- 345 turns one!
- Opened a new nursery room for 2+3 year olds.
- Cooper's Buddies
- 130+ Sunday Volunteers



# YOUTH MINISTRY

- Began 1825 ministry
- Youth Leadership Team
- 18 students + 4 adults going to Bahamas for mission trip
- 35+ average Youth Group
- 95+ students engaged in 2023



















# ADULT MINISTRY

# YOU ARE CREATED FOR COMMUNITY GROUPS!

 <p><b>CG: Braughton</b> Every Other Friday (with one social special event per month) <a href="#">Open</a></p>	 <p><b>CG: Brown</b> Meets weekly on Fridays from 6-8pm <a href="#">Open</a></p>	 <p><b>CG: Browning</b> <a href="#">Open</a></p>
 <p><b>CG: Conrad Community Group</b> Meets every other week on Sundays from 4-6pm <a href="#">Open</a></p>	 <p><b>CG: Fletcher</b> Meets weekly on Tuesdays from 6:30-8:30pm <a href="#">Open</a></p>	 <p><b>CG: Herrick</b> <a href="#">Open</a></p>
 <p><b>CG: Ruefer</b> Meets weekly on Thursdays from 6:30-8:30pm <a href="#">Open</a></p>	 <p><b>CG: Sheppard</b> Meets weekly on Sundays from 6-8pm <a href="#">Open</a></p>	 <p><b>CG: Smith</b> <a href="#">Open</a></p>
 <p><b>CG: Tinsley/Webb</b> Weekly, Bi-weekly, or Monthly <a href="#">Open</a></p>	 <p><b>CG: Wiersma</b> Meets every other week on Sundays from 5-7pm <a href="#">Open</a></p>	 <p><b>CG: Wiley</b> Meets weekly on Tuesdays from 7-9pm <a href="#">Open</a></p>



**FLOURISHING  
FOR THE NEXT DECADE**



# STORY

What began as a dream of planting a church became a reality with a growing, vibrant, and fruitful church.

## Seasons and Stages of our Church

- Planting a new church (2005-2009)
- Rooting in our community (2010-2013)
- Blossoming ministries and staff (2014-2019)
- Sending new church plants (2020-2023)
- Growing ministries and staff (2022-2023)





# VISION

*Flourishing* for the next decade means we focus on...

**MAKING** growing followers of Jesus who influence others with the gospel as we

- go out to serve and share our faith,
- gather people in for hospitable worship, and
- grow together in authentic relationships.

# VISION

*Flourishing* for the next decade means we focus on...

## **EXPANDING** facilities

- place for all ages and stages of life reflecting the diversity of our community
- space for those who are not yet here
- 400 average attendance in one Sunday service





# VISION

*Flourishing* for the next decade means we focus on...

**SENDING** - a healthy church is not only measured by its seating capacity but by its sending capacity

- Sending mission teams and long term missionaries
- Partners in a movement of our presbytery to start 10 new churches in the greater metro RVA area.

The image is a collage of autumn-themed photographs. The top half features a misty landscape with trees and a church steeple with a golden dome. The bottom half shows a brick building with a circular window and a banner flying in the air. The text 'FACILITY EXPANSION' is overlaid on the left side.

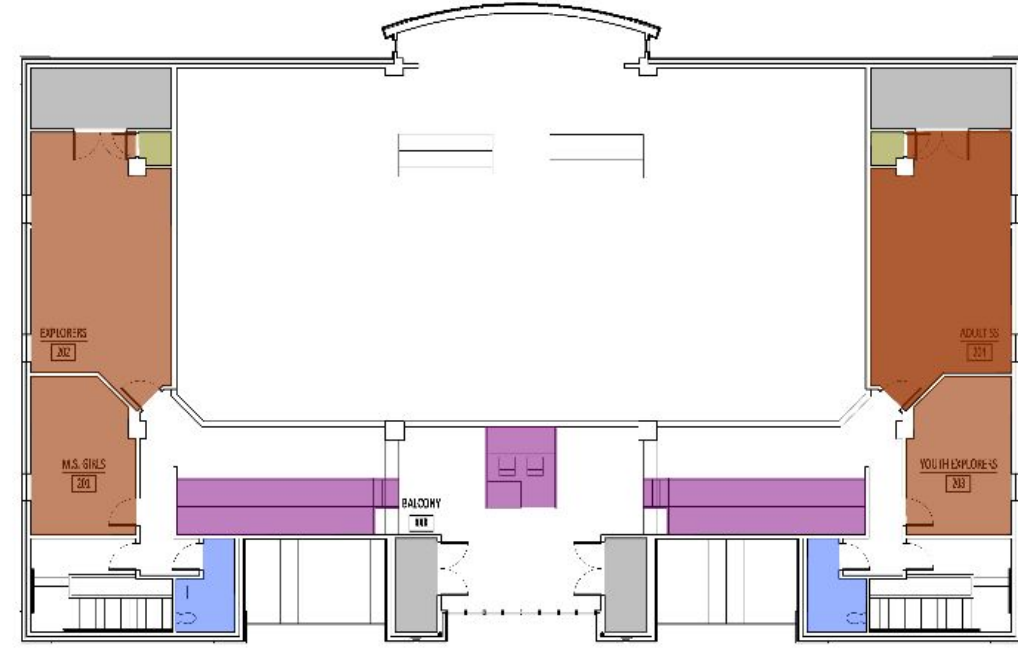
# **FACILITY EXPANSION**

The General Contractor is responsible for all bidders reviewing all the contract documents. All bids shall state that the bidder reviewed all the contract documents for coordination with their work.  
HUFFMORRIS ARCHITECTS P.C. IS THE AUTHOR AND OWNER OF THESE INSTRUMENTS OF SERVICE



**A** EXISTING  
**FIRST FLOOR PLAN**  
SCALE: 1/8" = 1'-0"

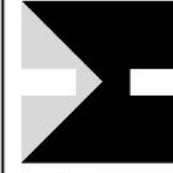
**B** EXISTING  
**SECOND FLOOR PLAN**  
SCALE: 1/8" = 1'-0"



**AO.1**

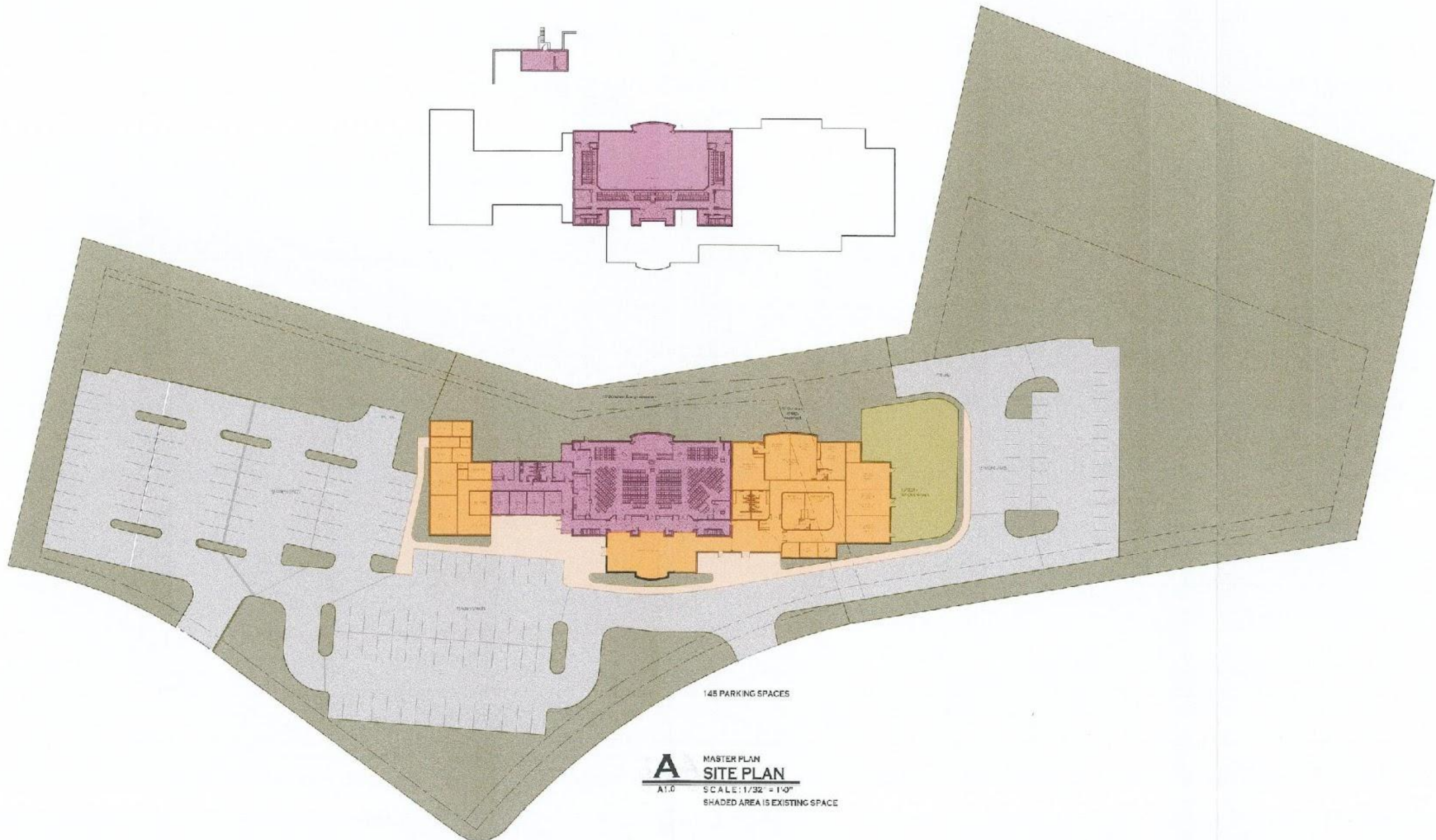
9 March 2023  
Existing Floor Plans

**SPRING RUN PRESBYTERIAN CHURCH**  
6901 WOODLAKE PARKWAY, CHESTERFIELD COUNTY, VIRGINIA



**HUFFMORRIS ARCHITECTS**  
1516 MILL LAWN DRIVE SUITE 108 RICHMOND, VIRGINIA 23230  
WWW.HUFFMORRIS.COM  
804.343.1505

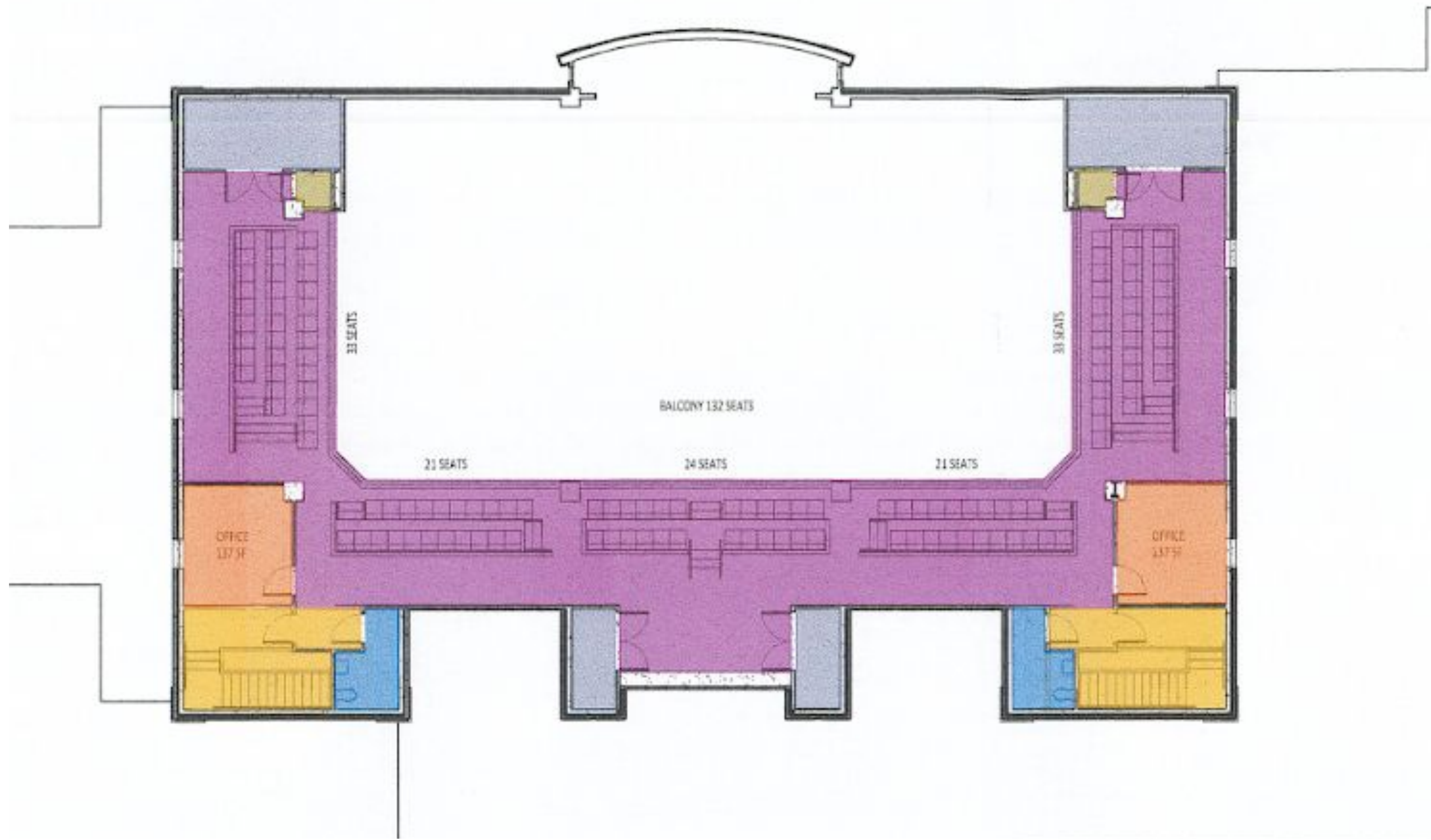
Established 1930

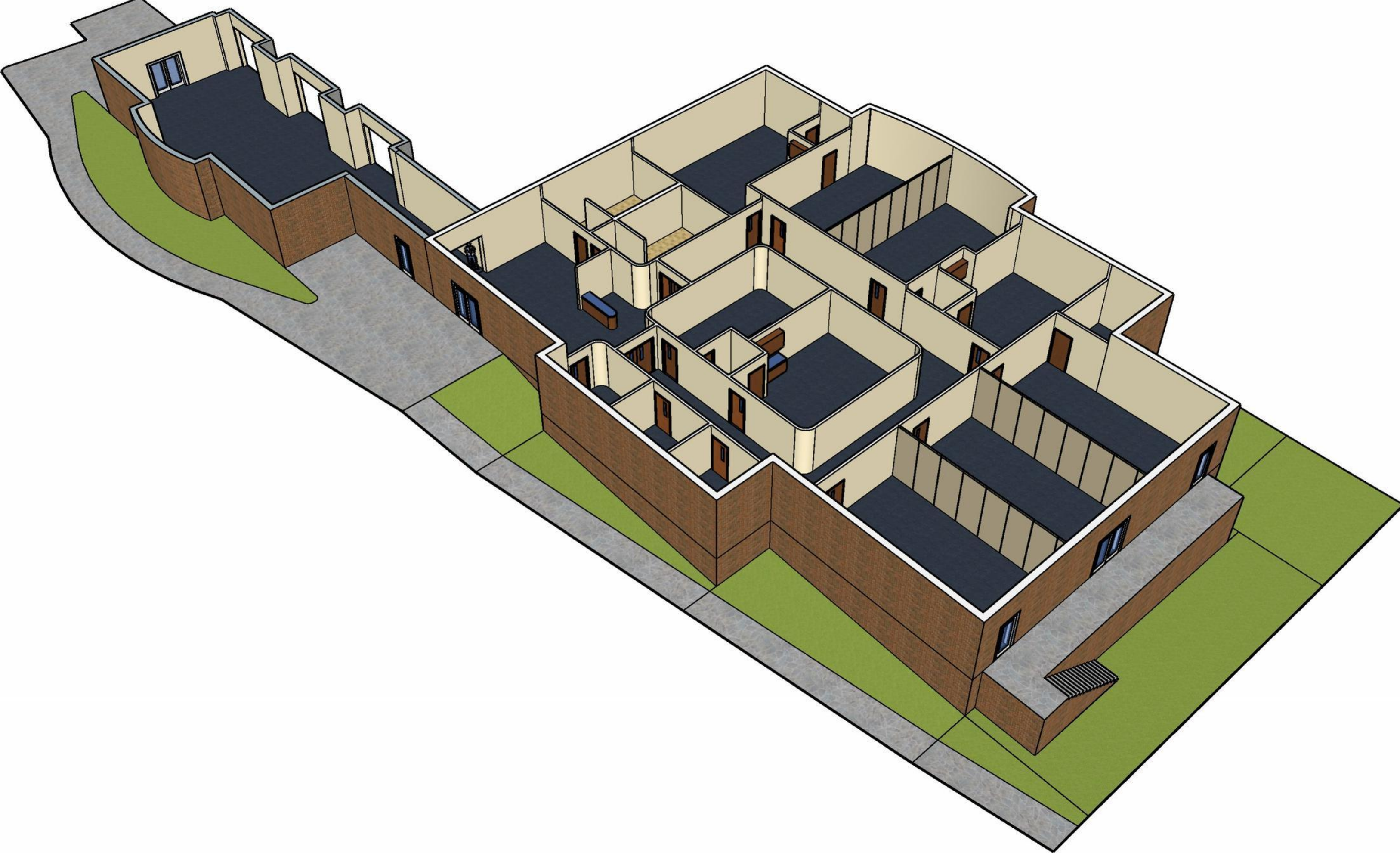


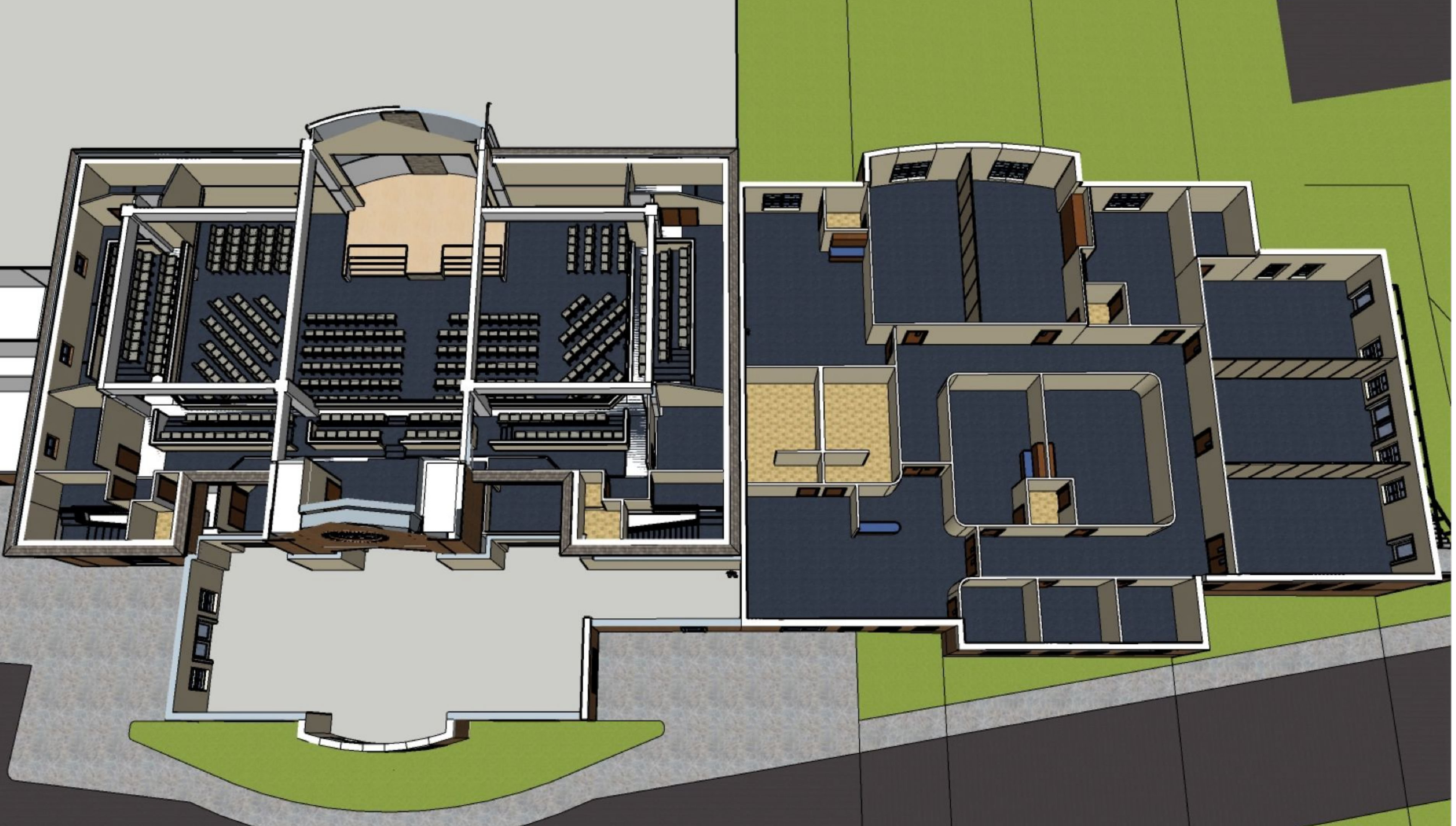
**A** MASTER PLAN  
**SITE PLAN**  
A1.0 SCALE: 1/32" = 1'-0"  
SHADED AREA IS EXISTING SPACE













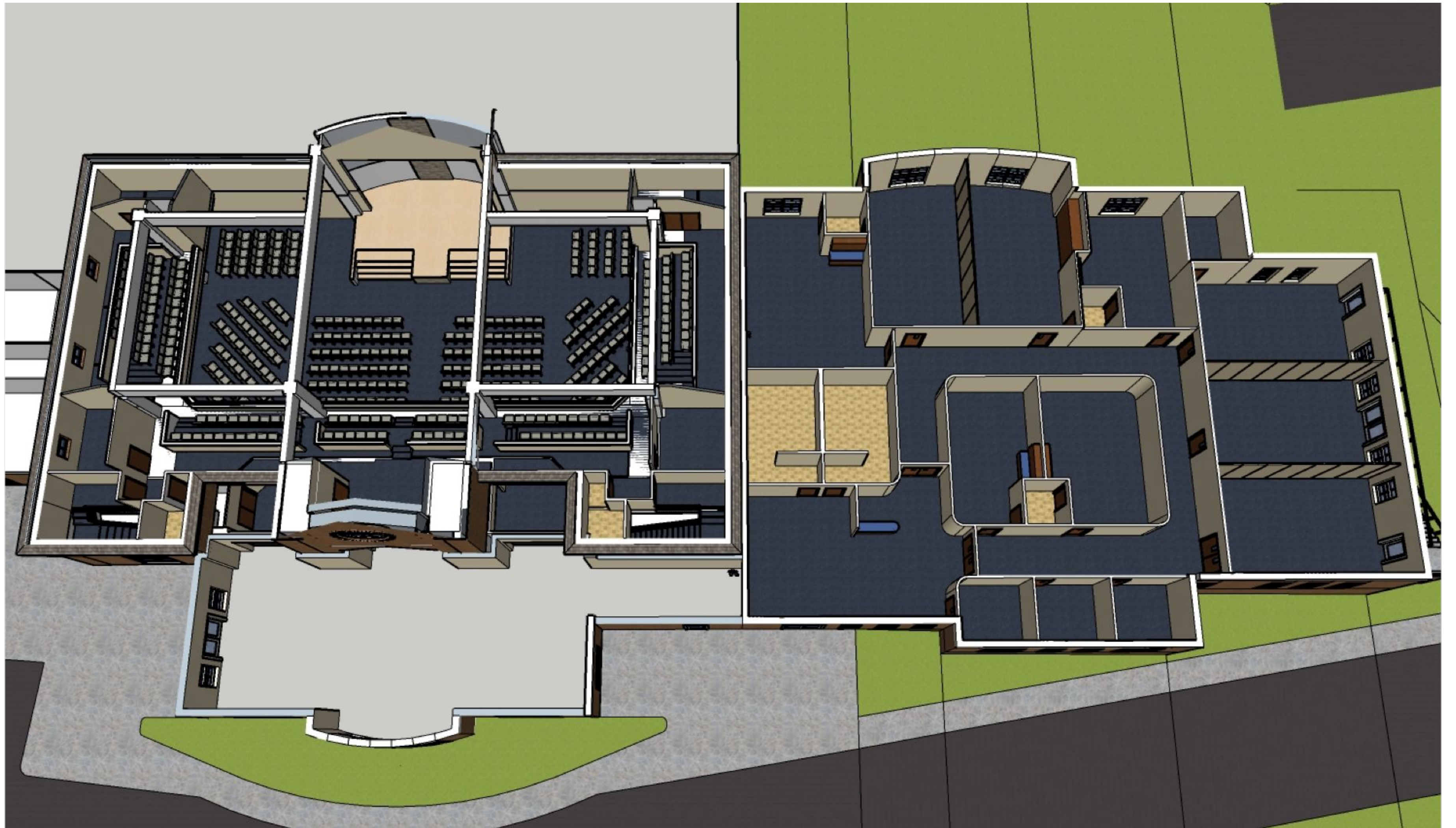
























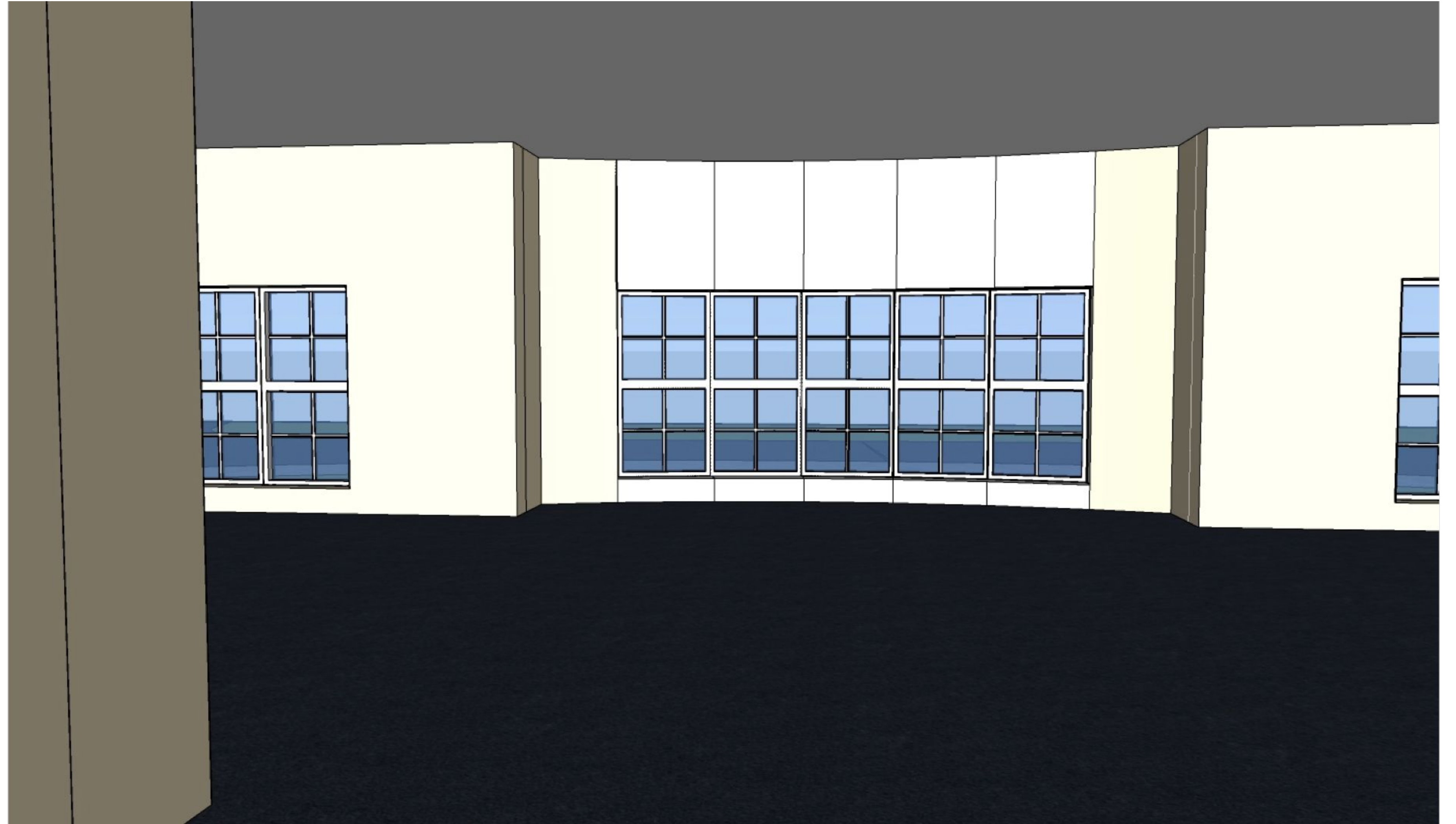


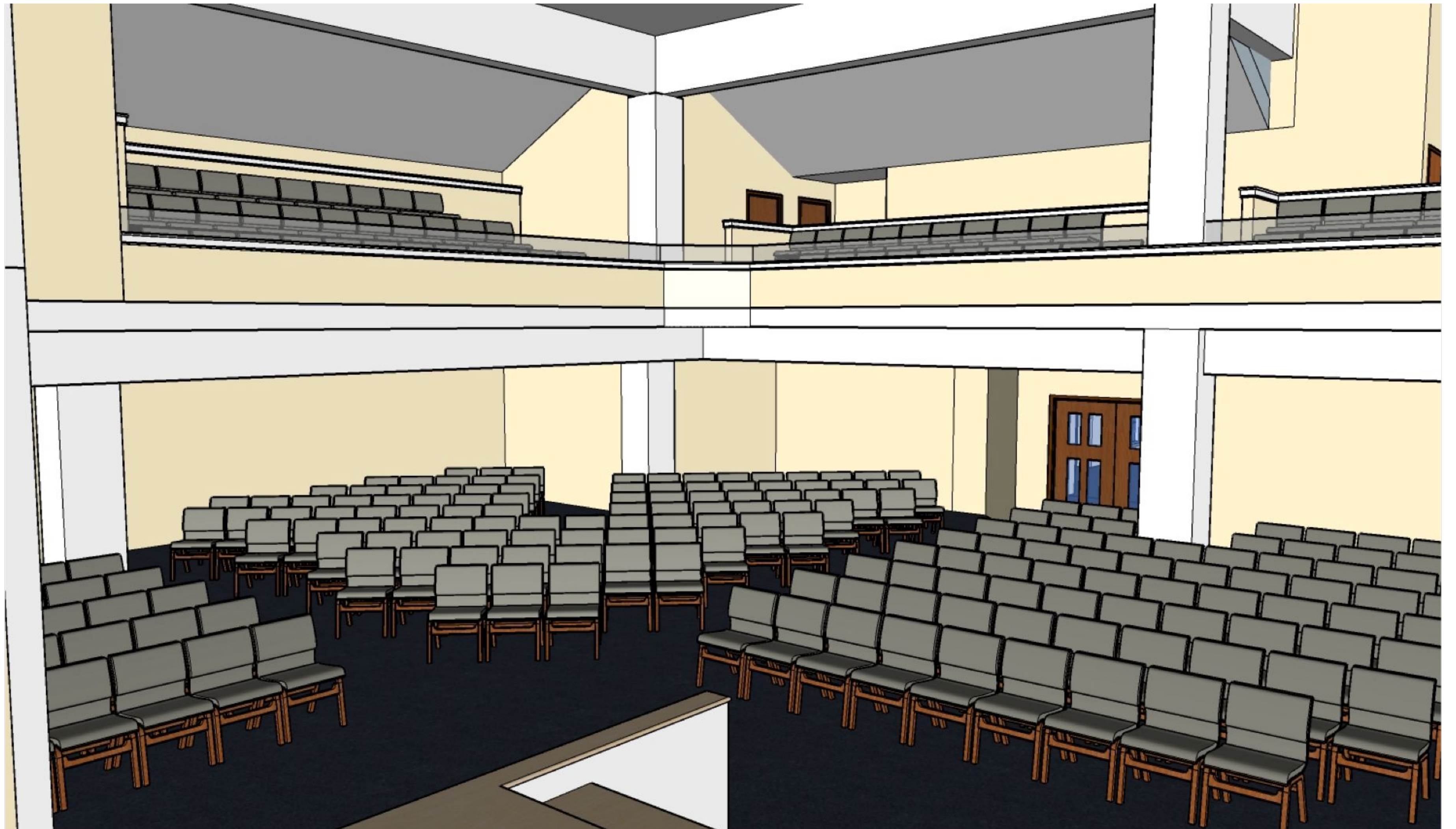


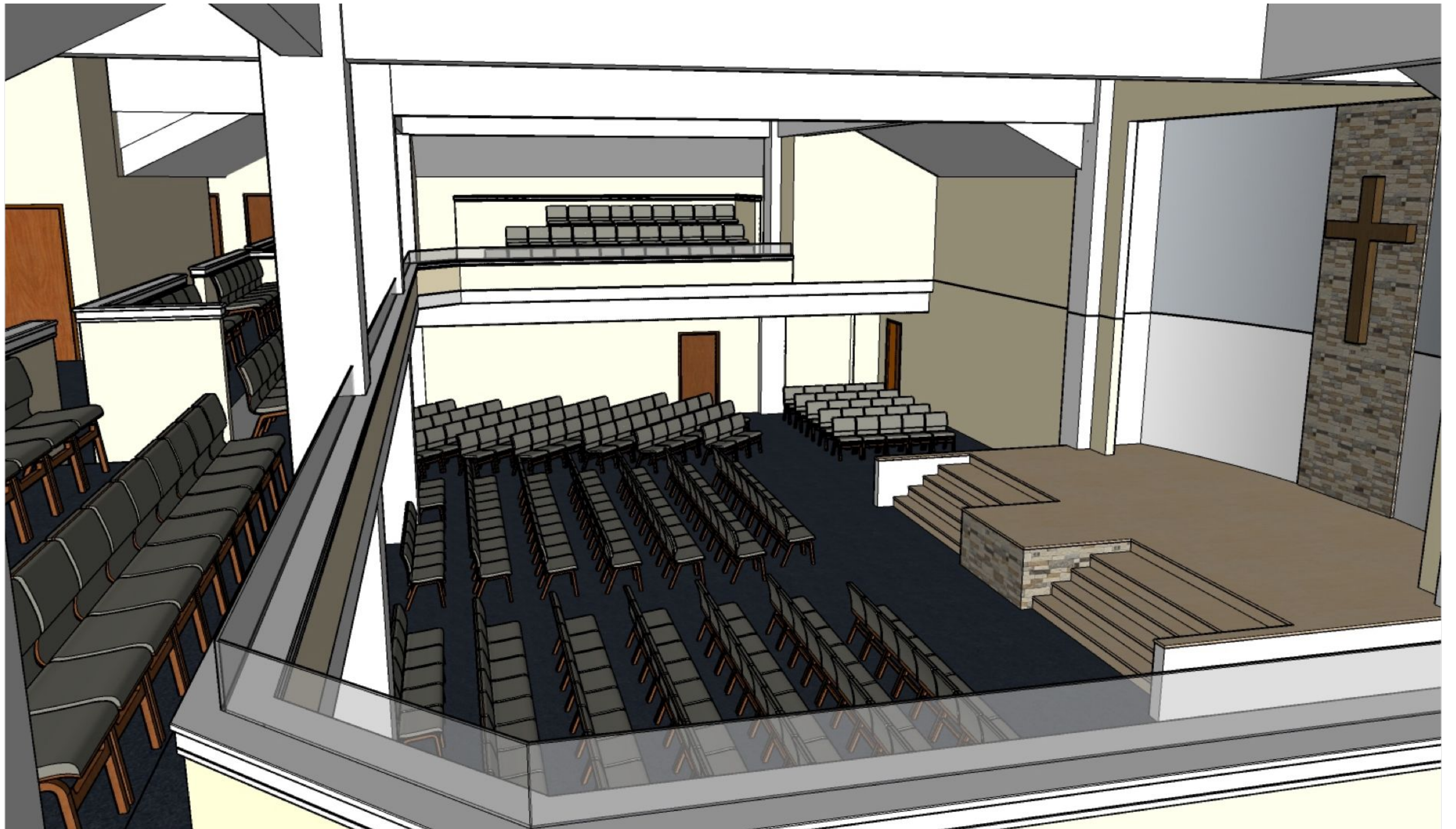


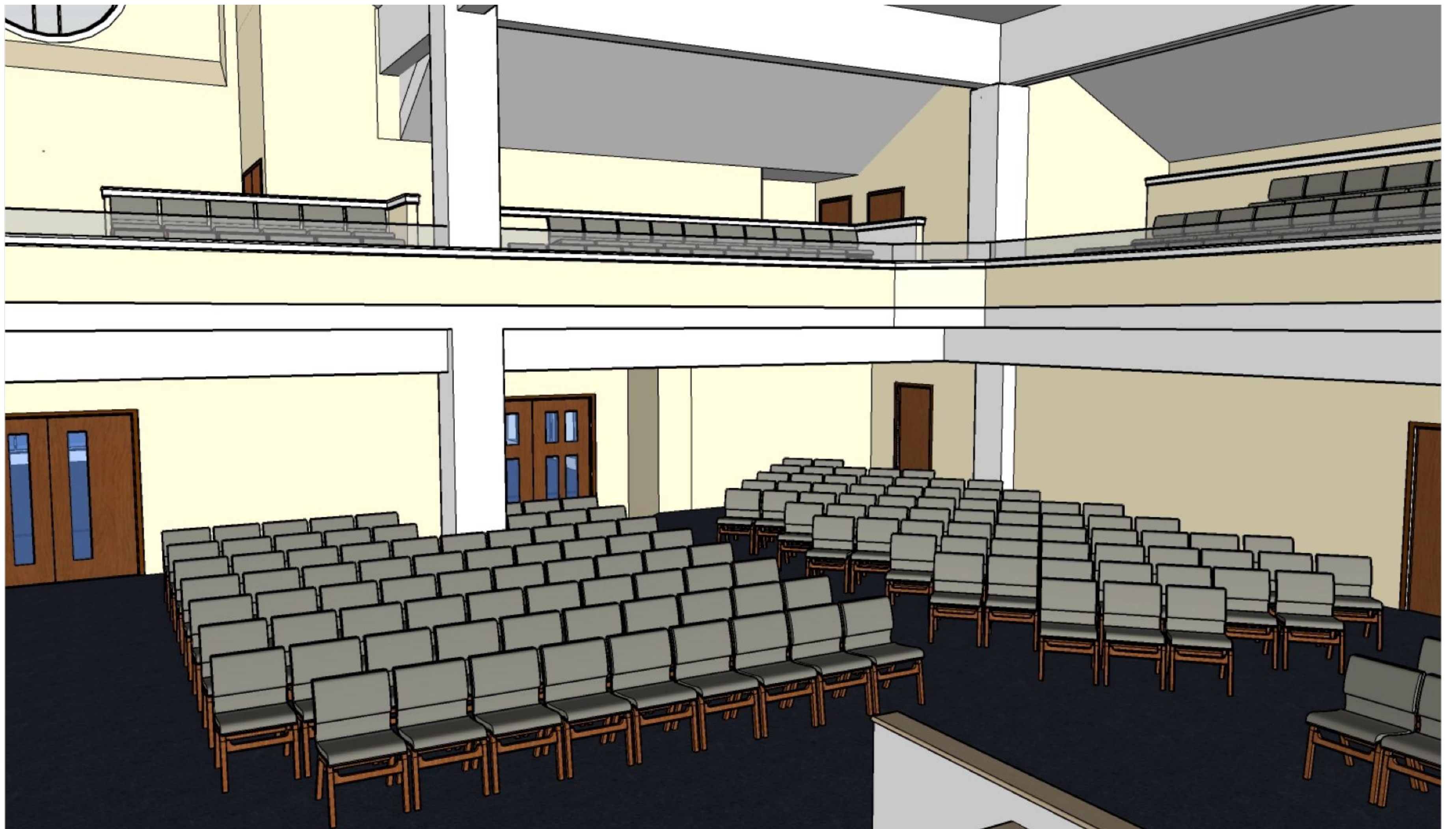






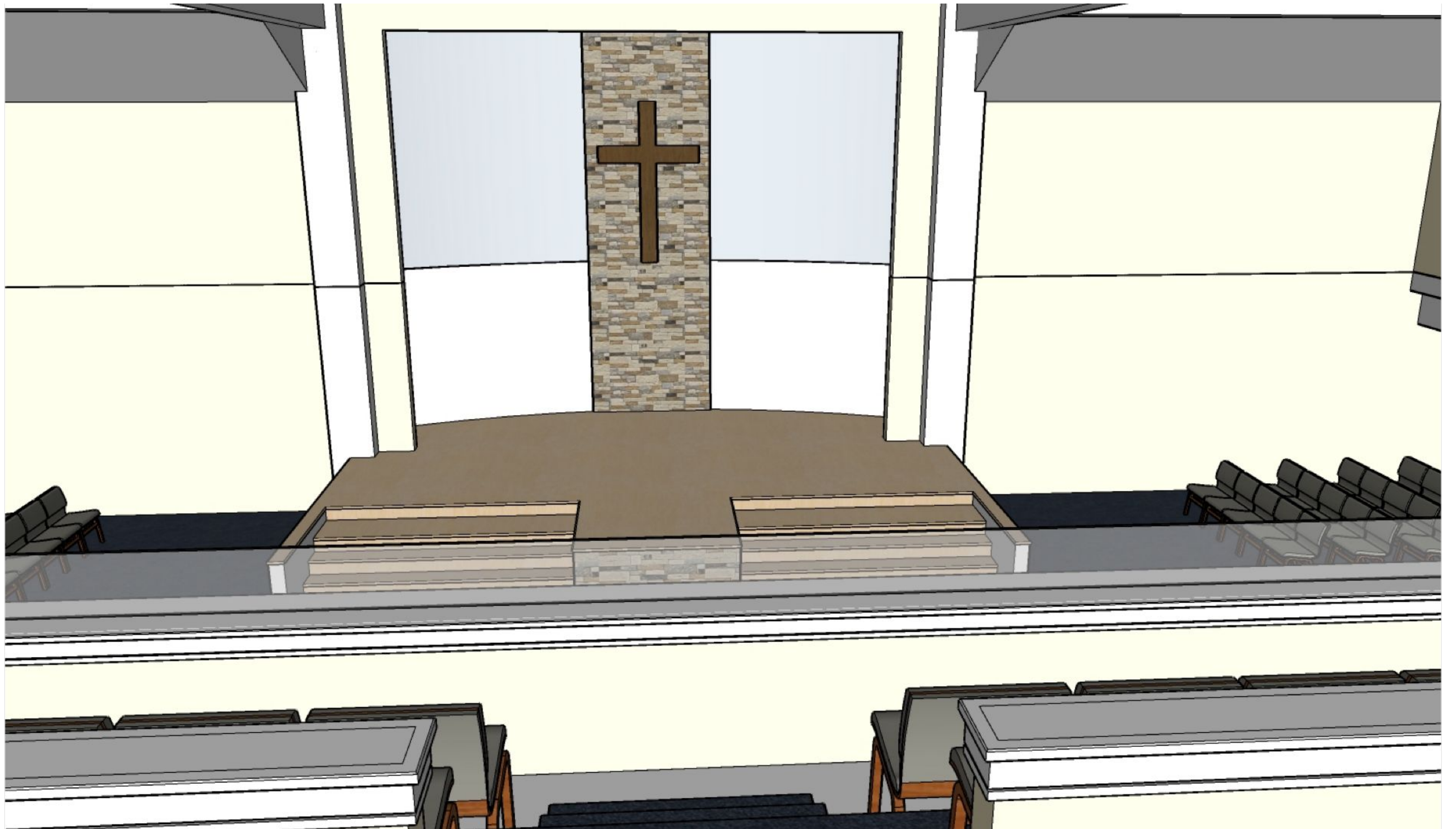




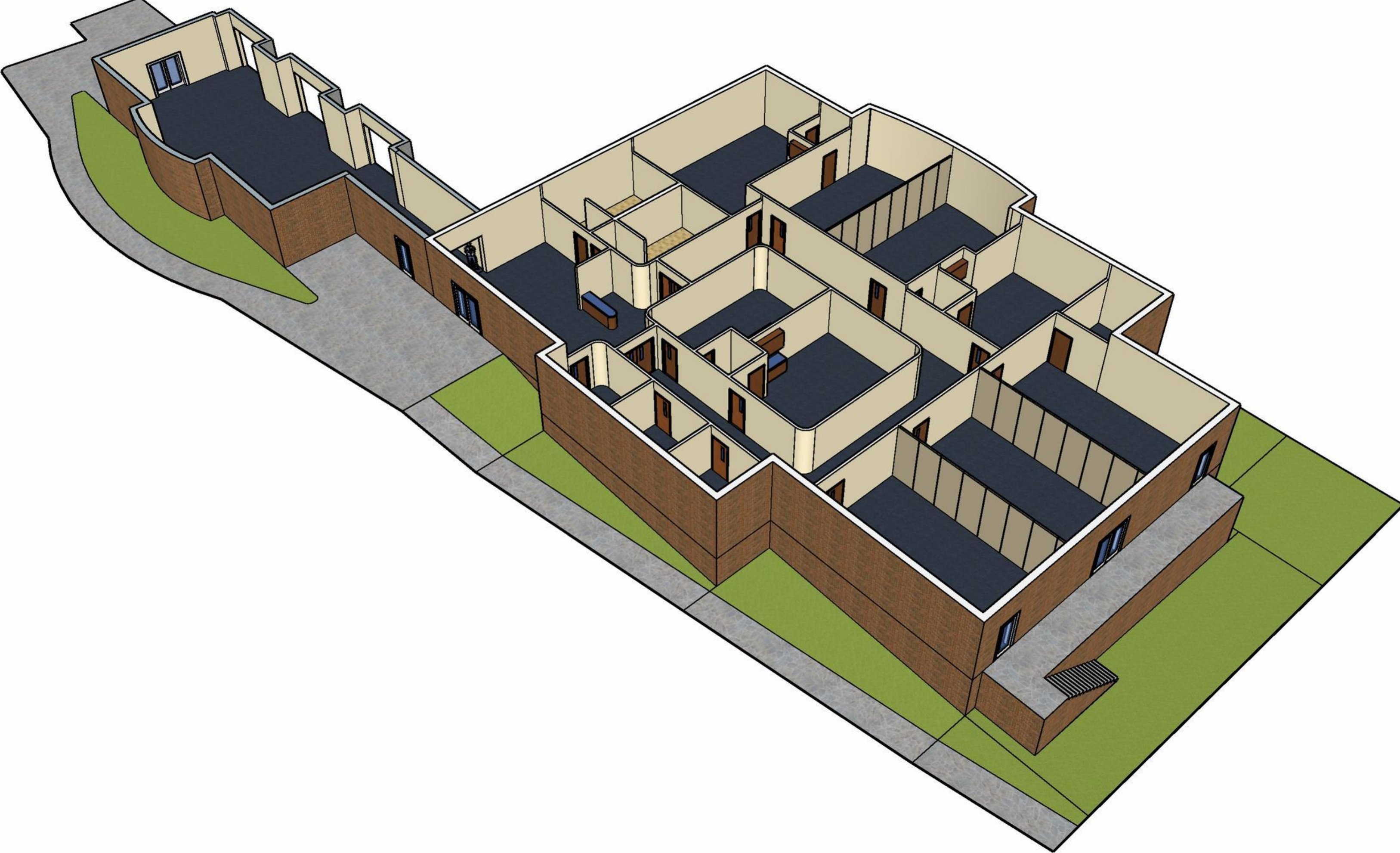












**WHAT'S  
NEXT?**





## BECOME A MEMBER

There are many benefits to membership in the body of Christ. Helping us to make thoughtful decisions is one of them.



**ATTEND A  
TOWN HALL**

**02/20@7:00P**

OR

**02/25@11:15A**



# FEASIBILITY STUDY

A feasibility study is a detailed analysis that considers all of the critical aspects of a proposed project in order to determine the likelihood of it succeeding.

The background of the slide features a photograph of a church with a prominent steeple, partially obscured by trees with vibrant autumn foliage in shades of orange, yellow, and red. The church has a dark roof and a white steeple with a gold dome. The scene is set against a clear blue sky. A semi-transparent white rectangular box is overlaid on the left side of the image, containing the text.

**QUESTIONS?**



# STAY INFORMED

This presentation +  
further updates on our  
Facility Plans will be in  
the Weekly News.

