




# Campaign Launch

Spring Run Presbyterian Church

May 18, 2025



Praise God from whom all blessings flow  
Praise him all creatures here below  
Praise him above, ye heavenly host  
Praise Father, Son, and Holy Ghost  
Amen Amen Amen

# IMMEASURABLY MORE

*rooted in faith,  
growing for the future*



*Praying for*

**IMMEASURABLY  
MORE**

*rooted in faith,  
growing for the future*



*Part 2*



**IMMEASURABLY  
MORE** *rooted in faith,  
growing for the future*

# Where We've Come

- Our Growth
- Our Challenges
- Our Vision



# Study & Campaign Counsel

**Dan Nielson**

*Canaan Group Church*





# Why the Campaign?



- Our facilities are stretched.
- We are steadily approaching maximum capacity for our worship service.
- Ministries are growing, for all ages, and we lack the space to accommodate it.
- We lack space to gather for fellowship, before and after services, and for other education and ministry events.



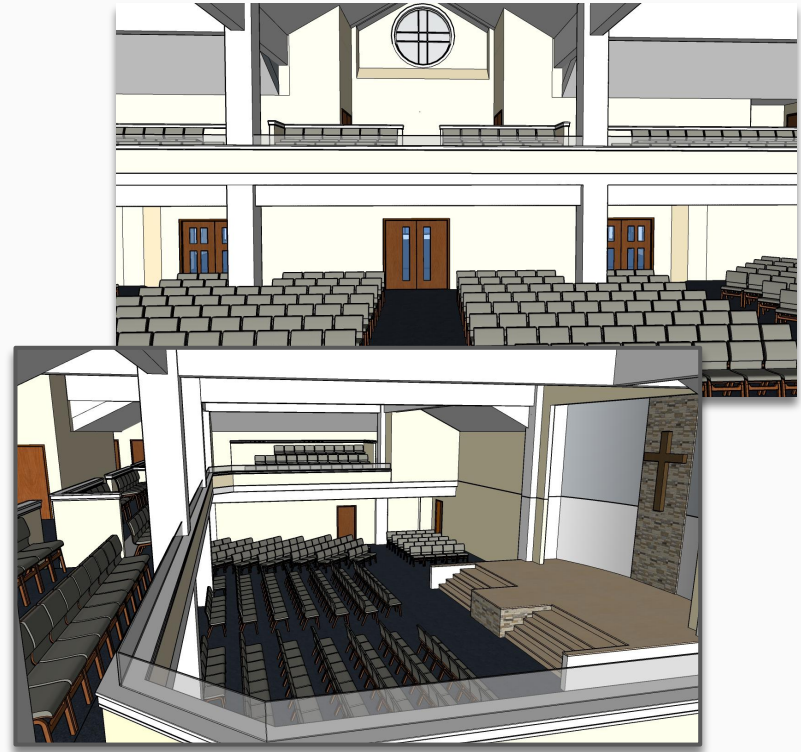
# 1. Gathering Place

We will construct a 3,000 square foot gathering place on the front side of the church that will serve as a multi-use area for **fellowship** and **education**. It will be used in every facet of our church life, not only exponentially improving a place to gather and **connect on Sunday mornings**, but providing new and flexible space for education and activities **for our children**, all the way up to adults. In addition, this space provides greater functionality for events like weddings and funerals.



## 2. Sanctuary Expansion

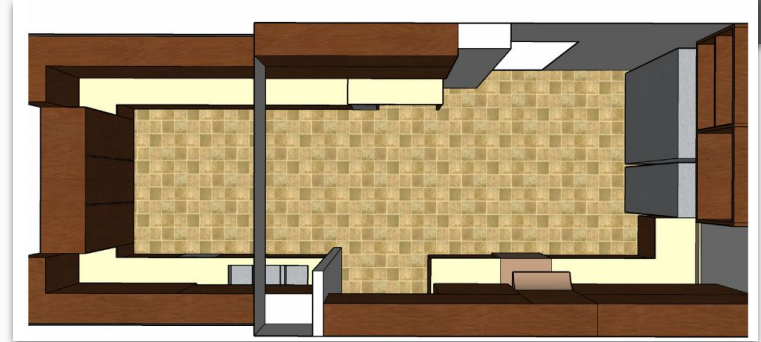
We will increase the capacity of our sanctuary to approximately **520 chairs** by opening the sides of the balcony. In addition to the additional seating capacity, this will also greatly improve the open feel of the space, and sight lines to the stage.



### 3. Various Renovations

We will complete several key projects that will improve the function, maintenance, and efficiency of our church space, including:

- Moving the **audio/visual booth** downstairs for better visibility and functionality;
- Expanding and **updating the kitchen**, while creating a new office by dividing an existing one;
- Implementing **updates to the upstairs and downstairs bathrooms**;
- **Upgrading sanctuary lighting** with more efficient and effective LED bulbs and controls; and
- Replacing the **outdated fire alarm system**.





# Building Steering Committee

**Stephen Bowers (Chair)**

**Andrew Conrad**

**Ralph Carrell**

**Jeff Green**

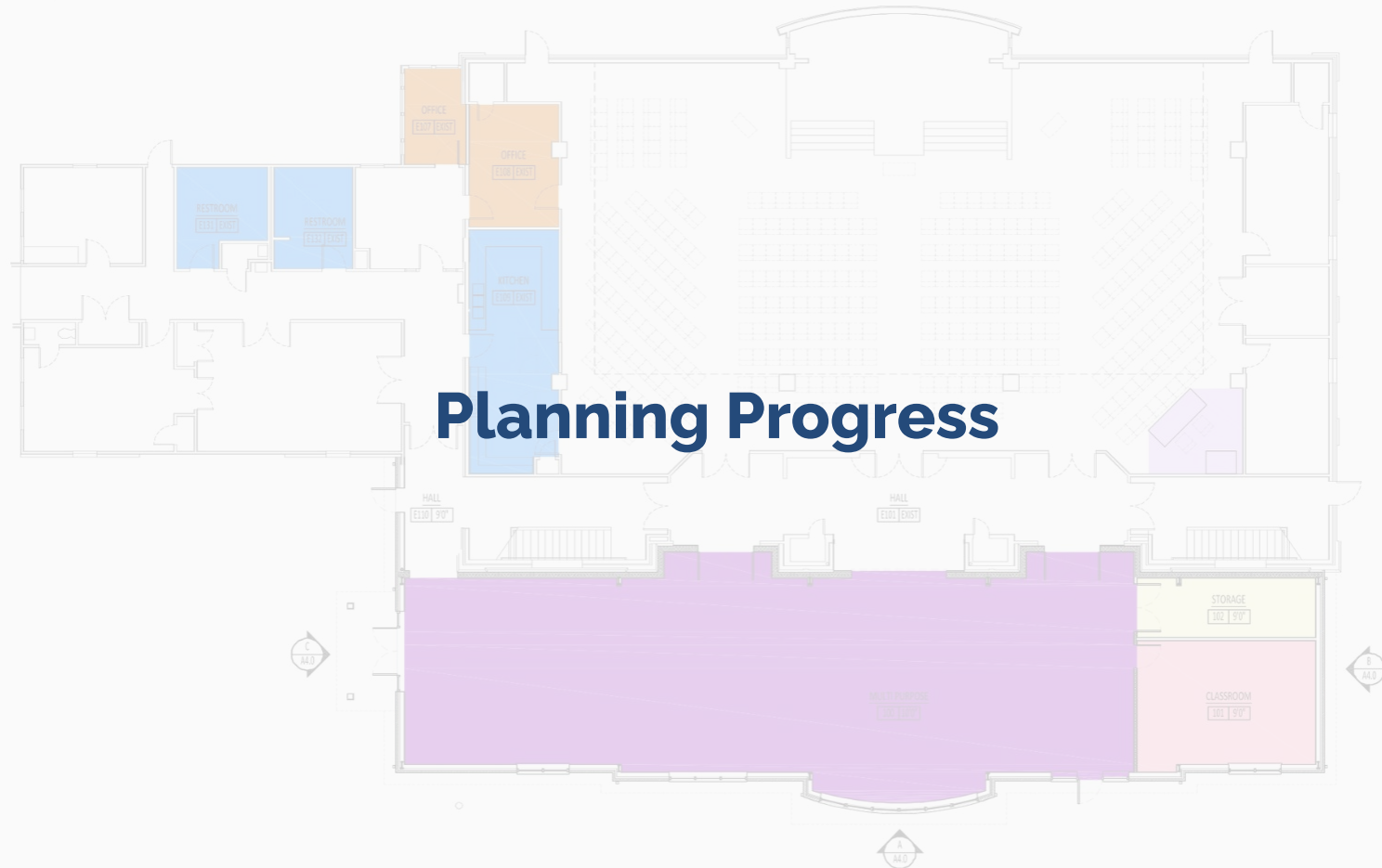
**Bruce McCloy**

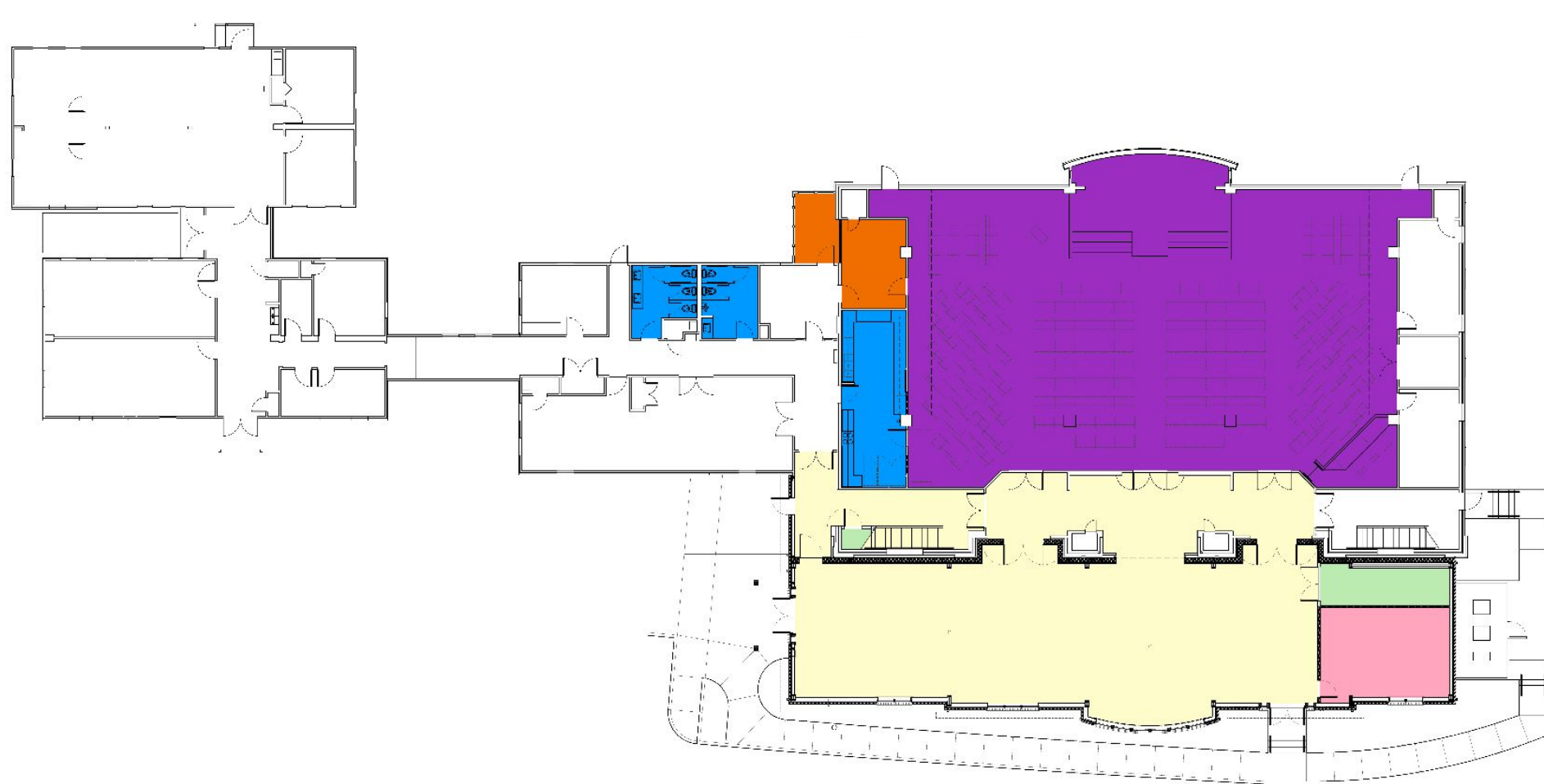
**Randy Patterson**

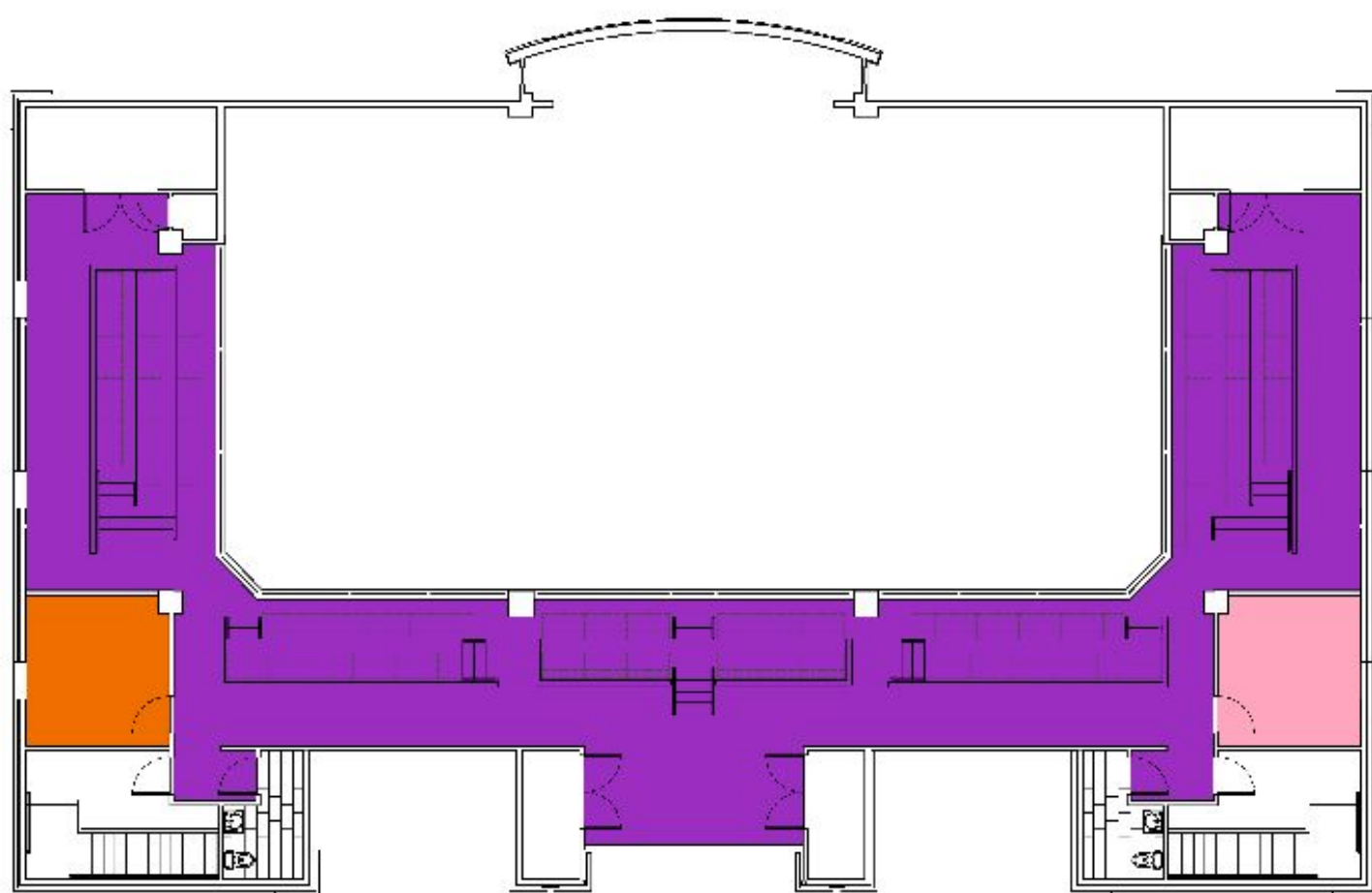
**Joy Roberts**



# Planning Progress



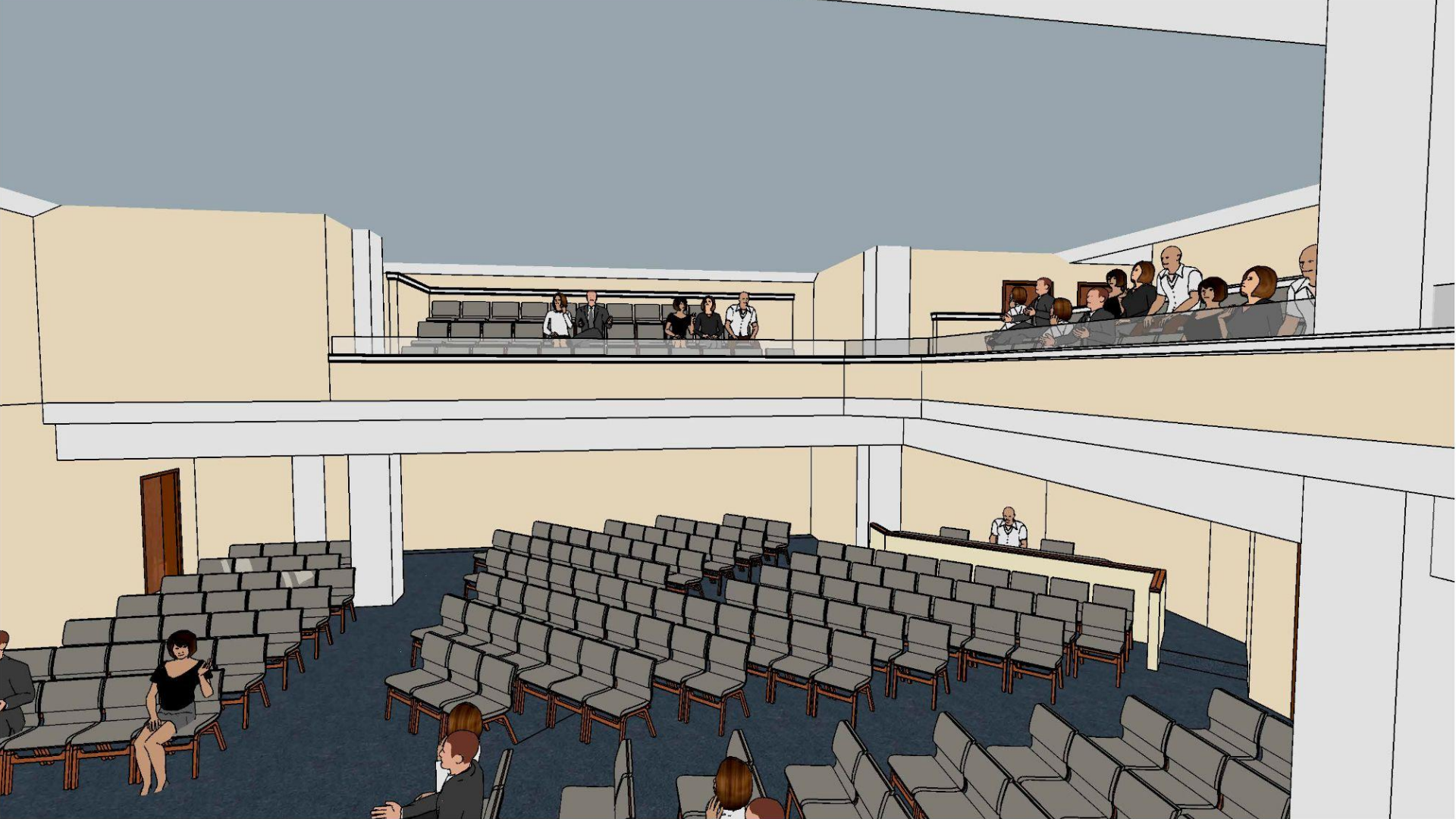




**B** SECOND FLOOR PLAN















2 Corinthians 8:7

But since you excel in everything—in faith, in speech, in knowledge, in complete earnestness and in the love we have kindled in you—see that you also **excel in this grace of giving.**

# IMMEASURABLY MORE

*rooted in faith,  
growing for the future*





# IMMEASURABLY MORE

*rooted in faith,  
growing for the future*





# Capital Campaign Committee

**Andrew Conrad**

**Jen DeStefano**

**John Hirschman**

**Gary Huff**

**Dave Kozlowski**

**Doug McDonough**

**Joy Roberts**

**Wayne Roberts**

**Ralph Saunders**

**Larry Simpson**

**(Chair)**

**Kathryn Wiley**





## CAMPAIGN GOAL

We set a minimum goal to raise **\$2,500,000** in single commitments and **3-year pledges.**





## HUMBLING PROGRESS

Over the past few months, **51 households**, including church leaders, elders, deacons, campaign committee members, and others in the congregation, have stepped forward to make early commitments to the campaign.

**Together, they have pledged...**





# \$1,682,100

pledged toward our \$2.5 million goal!





# Congregational Invitation


## REQUEST

All members of the SRPC Community are invited to make a **pledge of up to 3 years** to the *Immeasurably More* campaign.

## MATERIALS

We are providing materials today that outline the campaign's goals and priorities, and pledge information.

You can view the full campaign Case Statement and other materials on the campaign webpage.



# Pledge Form



At **Spring Run Presbyterian Church**, we believe God has called us to be faithful stewards of the resources He provides, ensuring our church continues to grow, serve, and impact our community for generations to come. Through this campaign, we have the opportunity to **invest in the future of our worship, fellowship, and ministry space**—creating a place where lives are transformed by the gospel.

Your commitment, whether large or small, is an expression of faith and partnership in what God is doing at Spring Run. **Prayerfully consider** how you can be a part of this exciting season in our church's story.

Please complete the form below as you commit to supporting this vision.

**Name:** \_\_\_\_\_

**Address:** \_\_\_\_\_

**Phone:** \_\_\_\_\_ **Email:** \_\_\_\_\_

**Total Campaign Commitment (over and above tithes and offerings):** \$ \_\_\_\_\_

**Commitment Fulfillment Preference:**

- ☐ One-time gift – I/we plan to give this commitment in full in 2025.
- ☐ Two-year – I/we will fulfill this commitment over 2025 and 2026.
- ☐ Three-year – I/we will fulfill this commitment over 2025, 2026, and 2027.
- ☐ Extended – I/we will fulfill this commitment over 2025 through June 2028.
- ☐ Other: \_\_\_\_\_

**Additional commitment details:** \_\_\_\_\_

**How would you like to fulfill your commitment moving forward?**

- |   |   |
|---|---|
| <input type="checkbox"/> One-time gift in 2025        | <input type="checkbox"/> Quarterly Contributions                |
| <input type="checkbox"/> Monthly Contributions        | <input type="checkbox"/> Annual Contribution (please note qtr.) |
| <input type="checkbox"/> Other (please specify) _____ |   |





# What's Next?

**May 18:** Campaign Kick-off (today!)

**June 1:** Campaign Town Hall

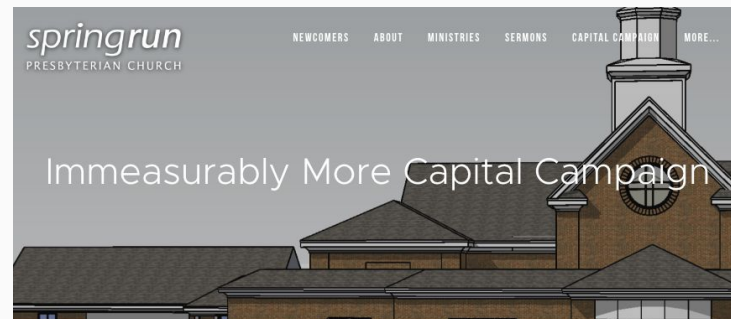
**June 19:** Prayer & Commitment Event #1

**July 20:** Prayer & Commitment Event #2

**July 27:** Annual Congregational Meeting & Campaign Culmination



# Resources & Updates



*A Message from Pastor Andrew:*

*"As we seek to serve our **growing church** family and extend our **impact for Christ**, we believe God is calling us to step forward in faith. Through the Immeasurably More Capital Campaign, we aim to expand our facilities, enhance our ministries, and prepare for the **next generation of gospel-centered growth**. We invite you to join us in this journey!"*

## The Vision

Why are we expanding? Because our **growth is outpacing our space**. We want to continue fostering deep community, equipping families, and reaching more people for Christ. This campaign will enable us to:

- Build a **3,000 sq. ft. Gathering Place** for fellowship and ministry
- Expand our **Sanctuary Seating** to 520 for worship growth
- Renovate our **kitchen, restrooms, and A/V booth**
- Upgrade our **lighting and fire safety systems**

**Goal: \$2.5 Million**

## Why It Matters

Since our founding, Spring Run has been committed to making disciples and serving our community. This expansion will:

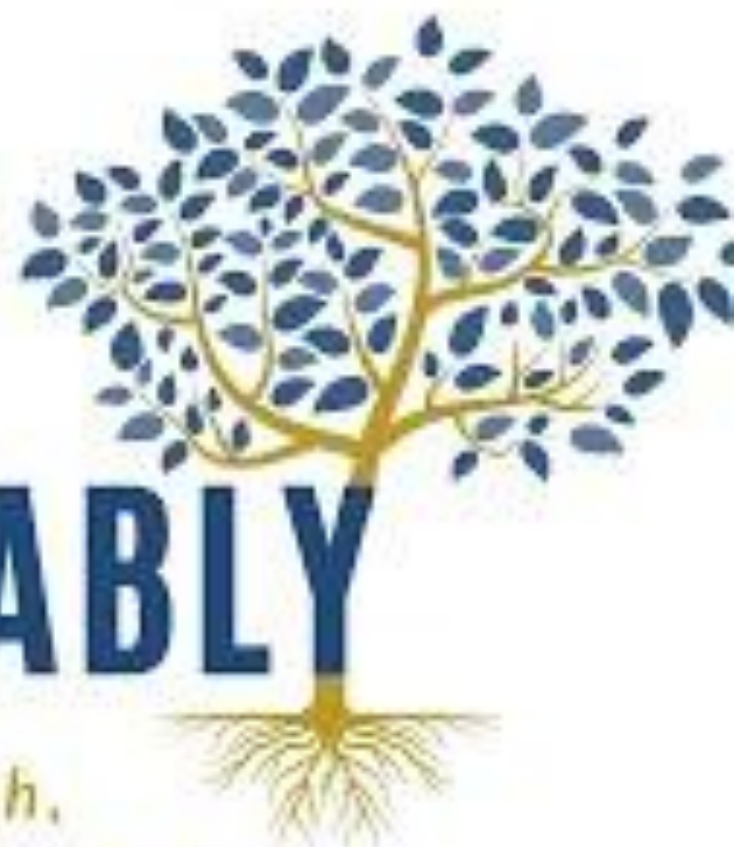
- **Strengthen Our Ministry** – Provide much-needed space for youth, families, and adult discipleship.
- **Enhance Worship + Fellowship** – More seating and improved facilities to welcome new members.
- **Prepare for the Future** – Position our church for sustainable growth and church planting.

## How You Can Help

- **Pray** – Seek God's guidance on how He is calling you to participate

# IMMEASURABLY MORE

*rooted in faith,  
growing for the future*



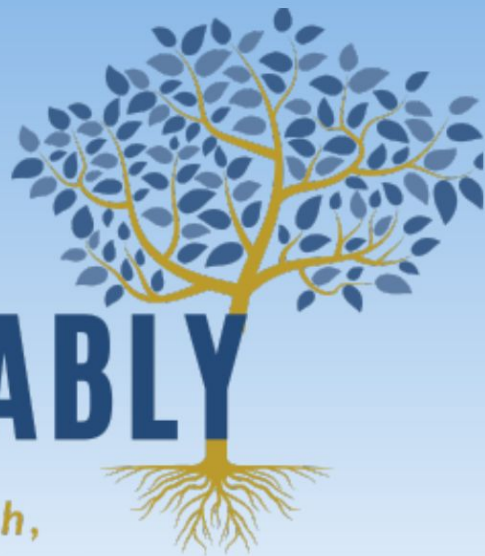
# QUESTIONS?



*Praying for*

**IMMEASURABLY  
MORE**



*rooted in faith,  
growing for the future*



# IMMEASURABLY MORE

*rooted in faith,  
growing for the future*





“Now to Him who is able to do  
immeasurably more than all we ask or  
imagine, according to his power that is at  
work within us, to him be glory in the church  
and in Christ Jesus throughout all  
generations, for ever and ever! Amen.”



**Ephesians 3:20-21**





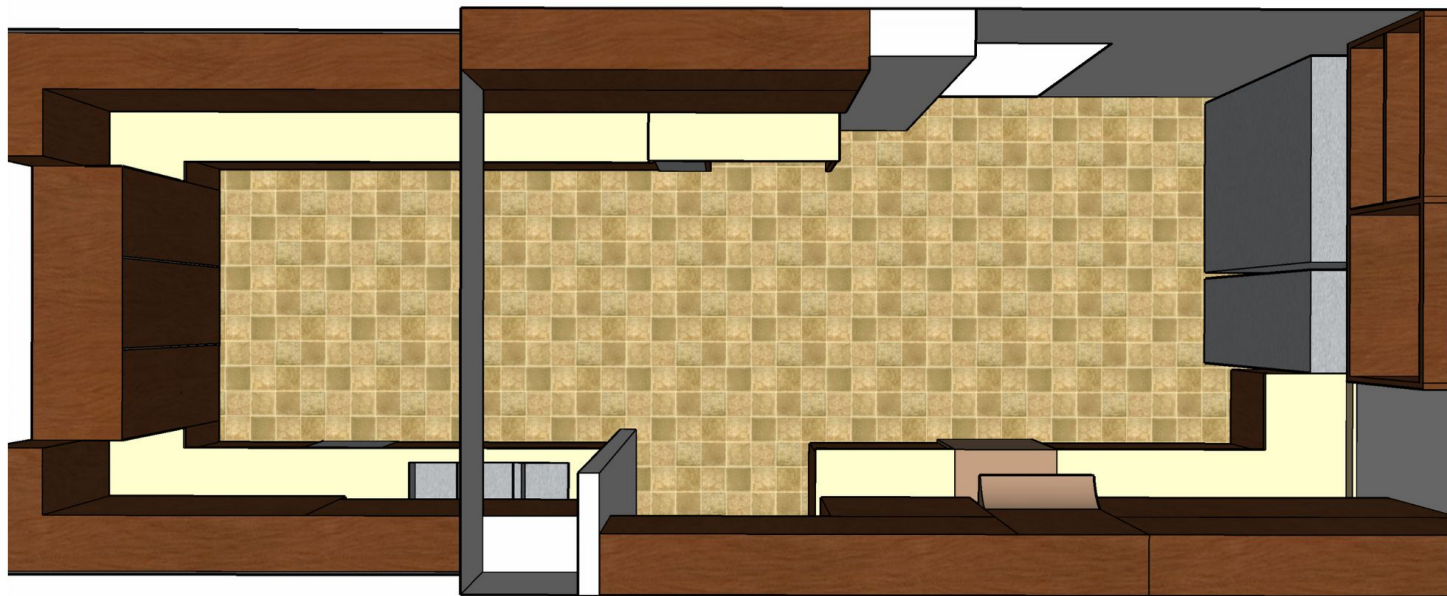
**Reference Slides Only**



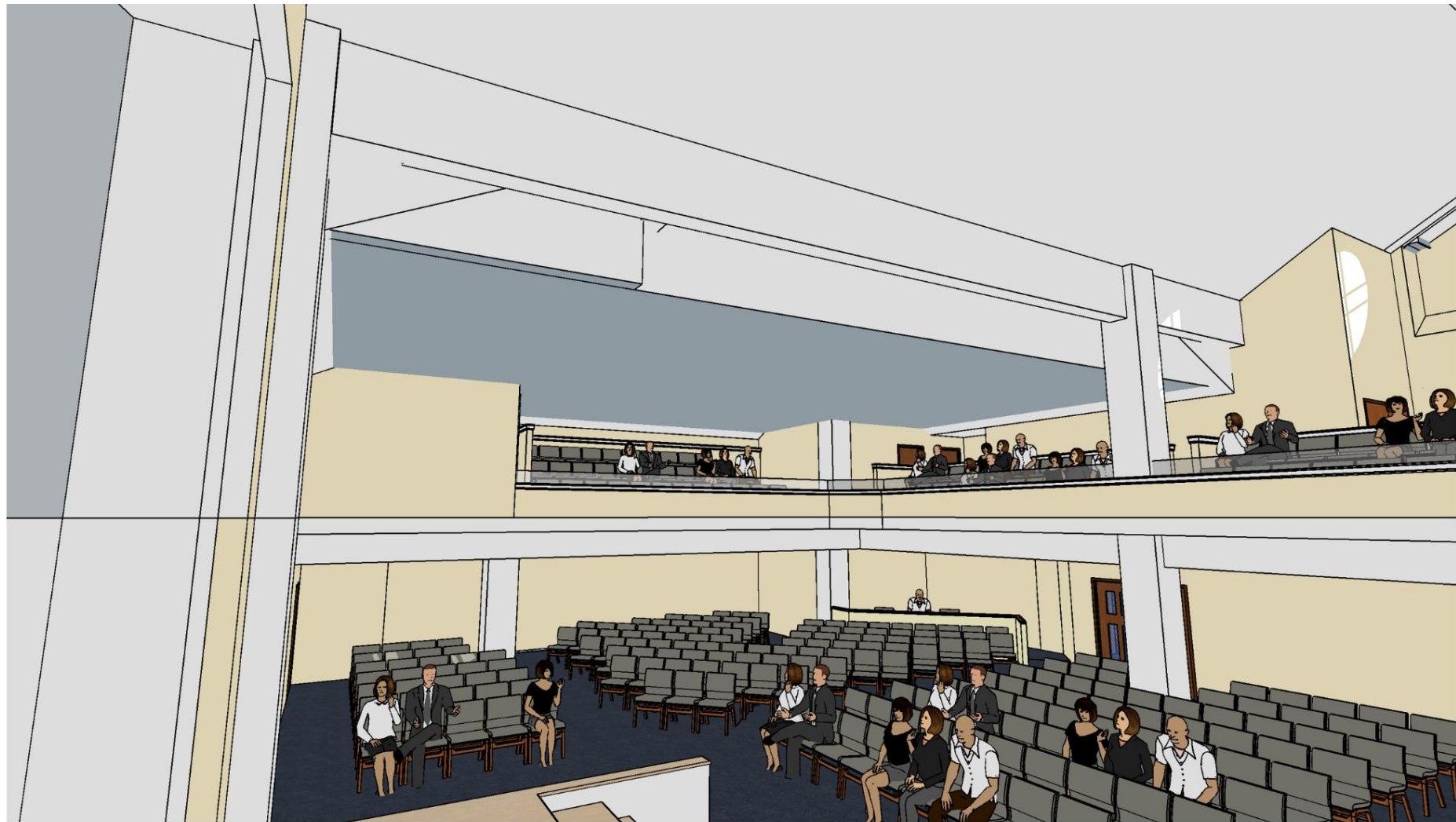






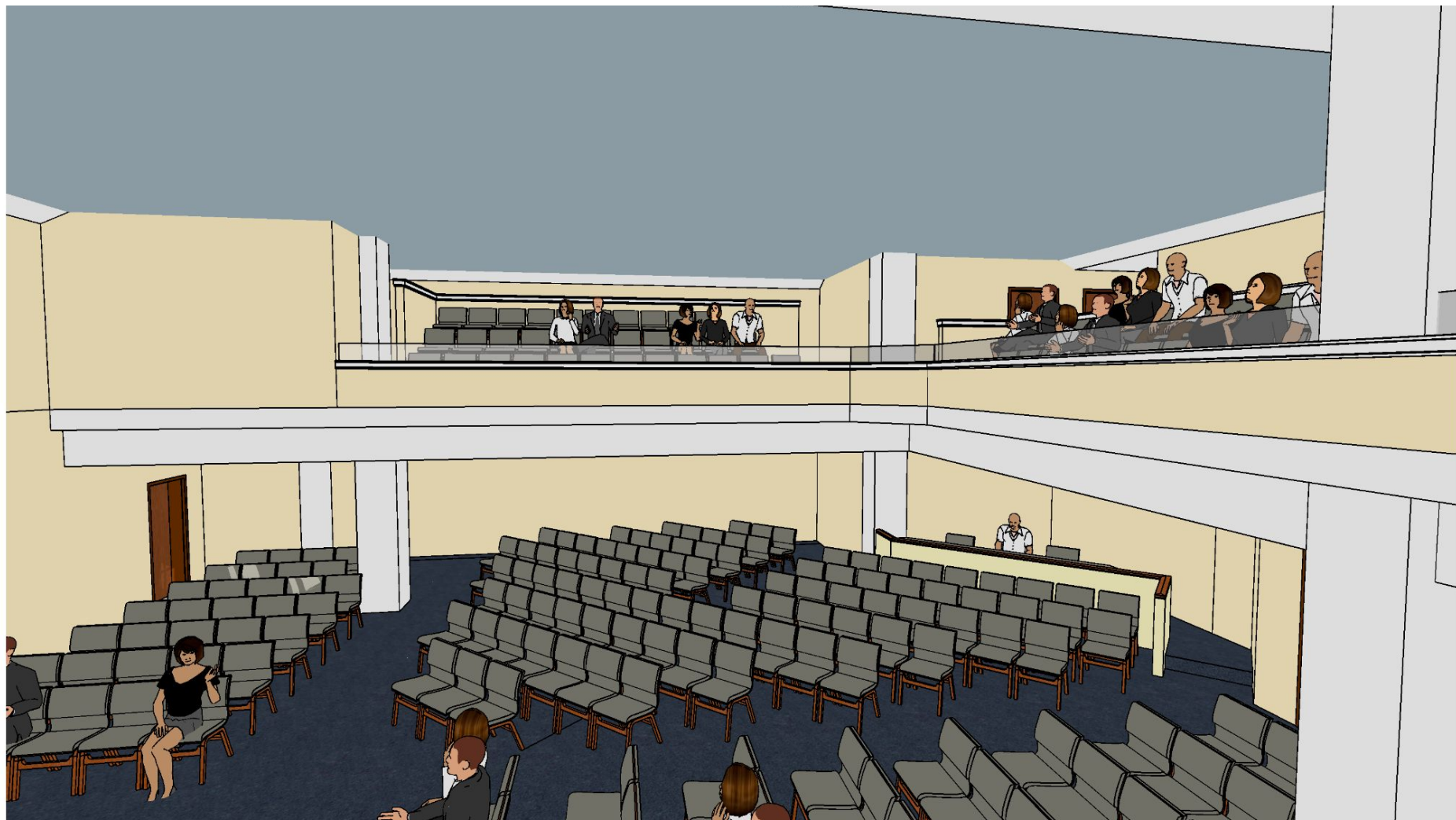


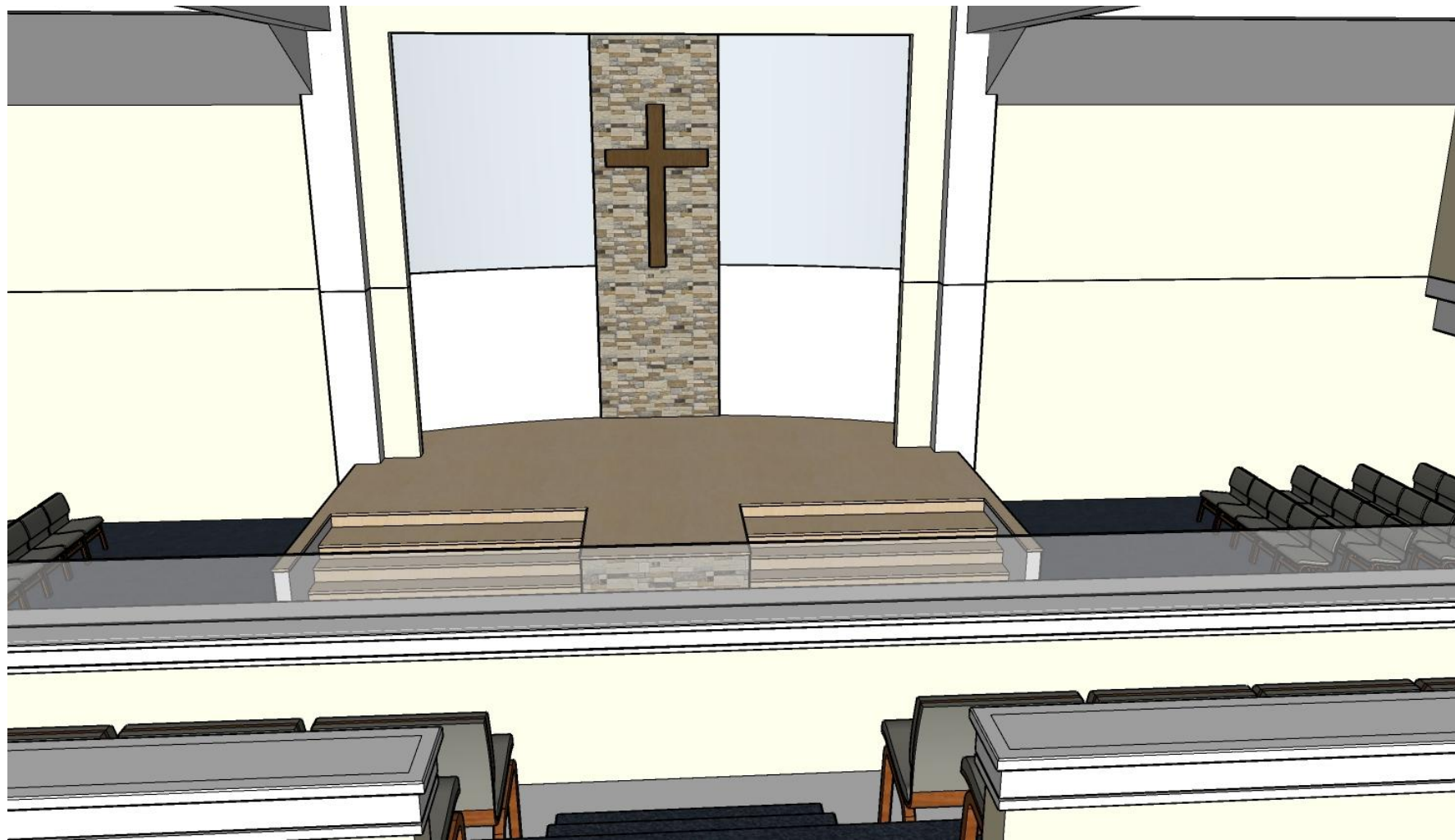




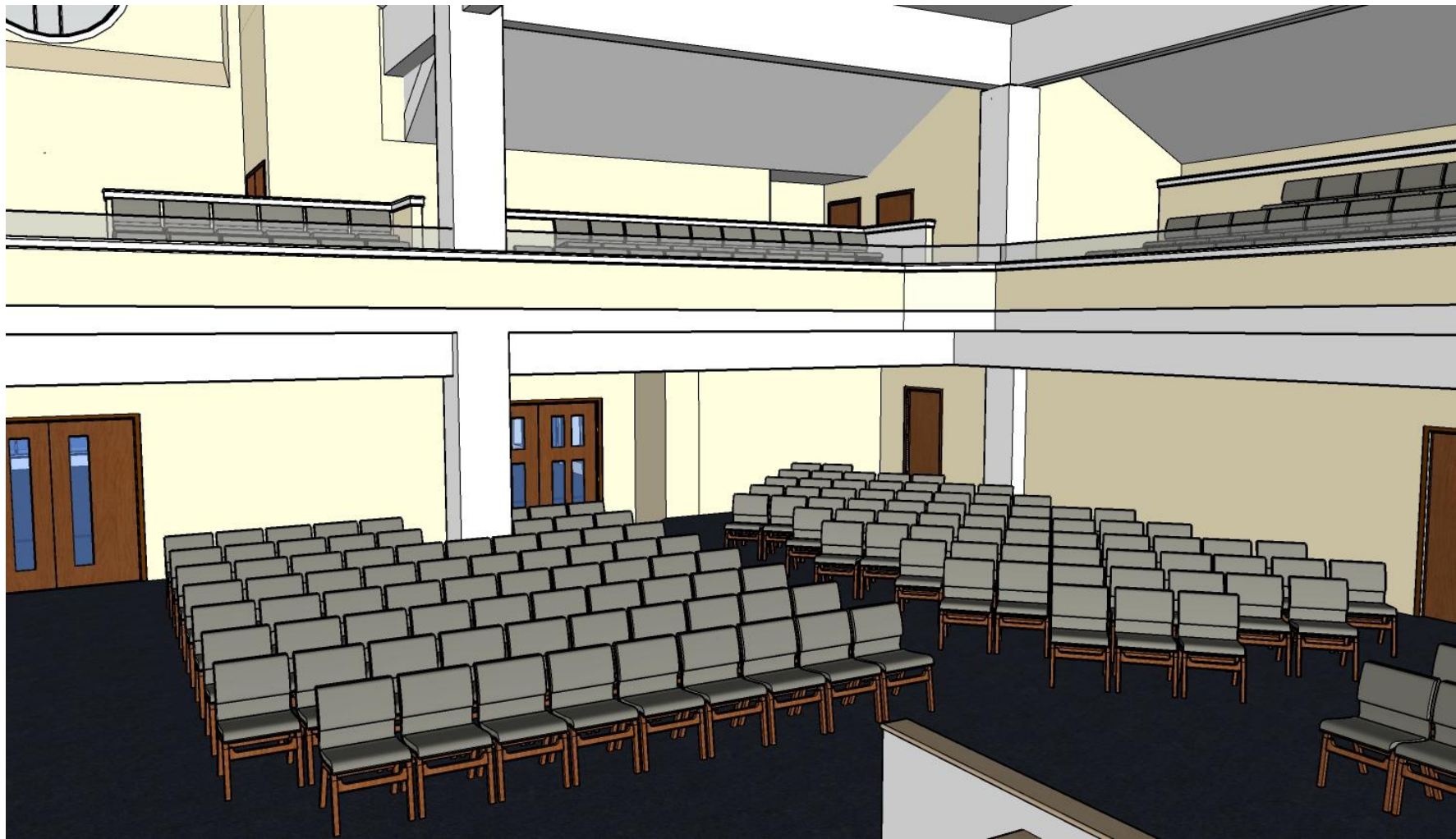
























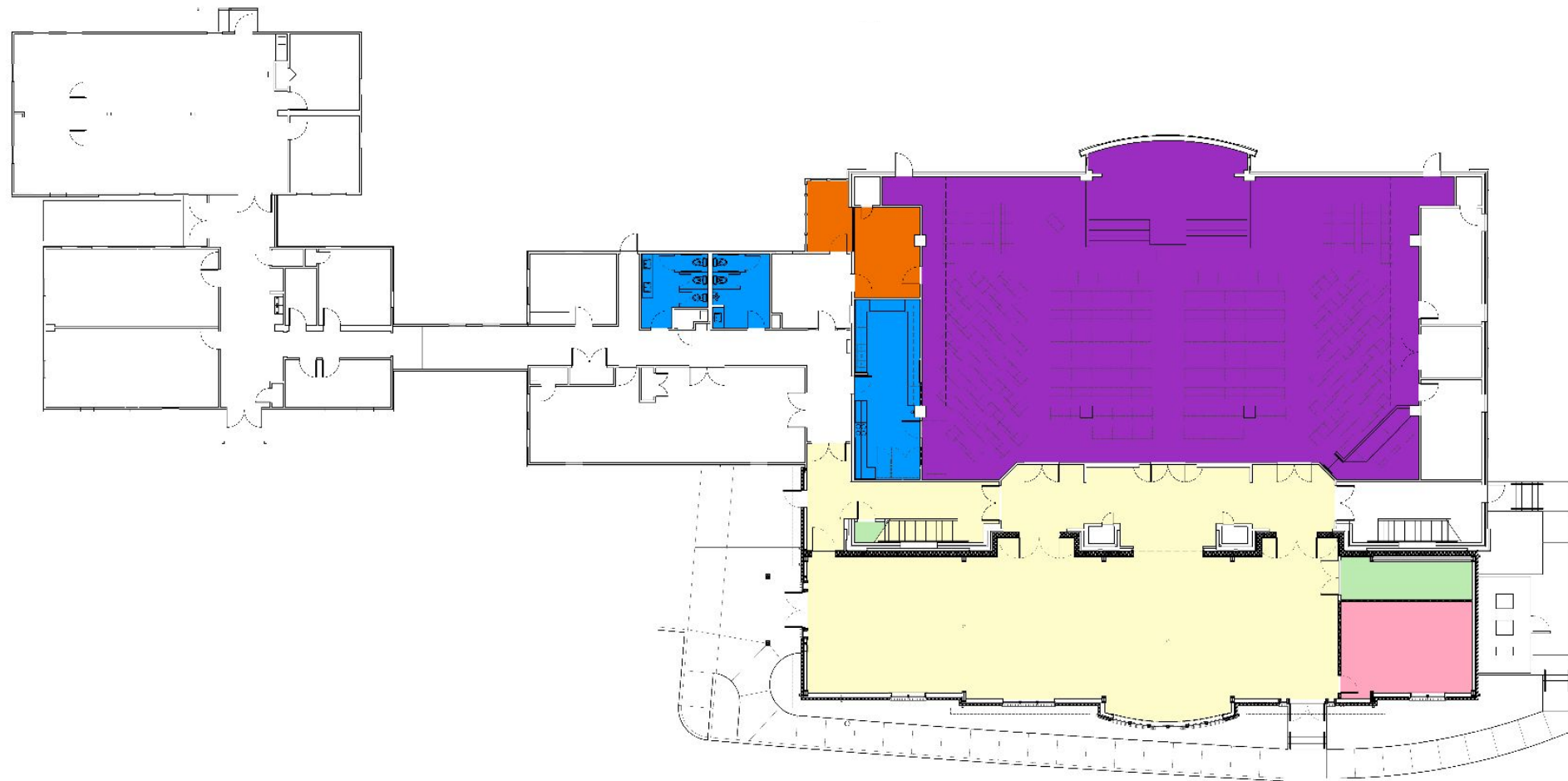


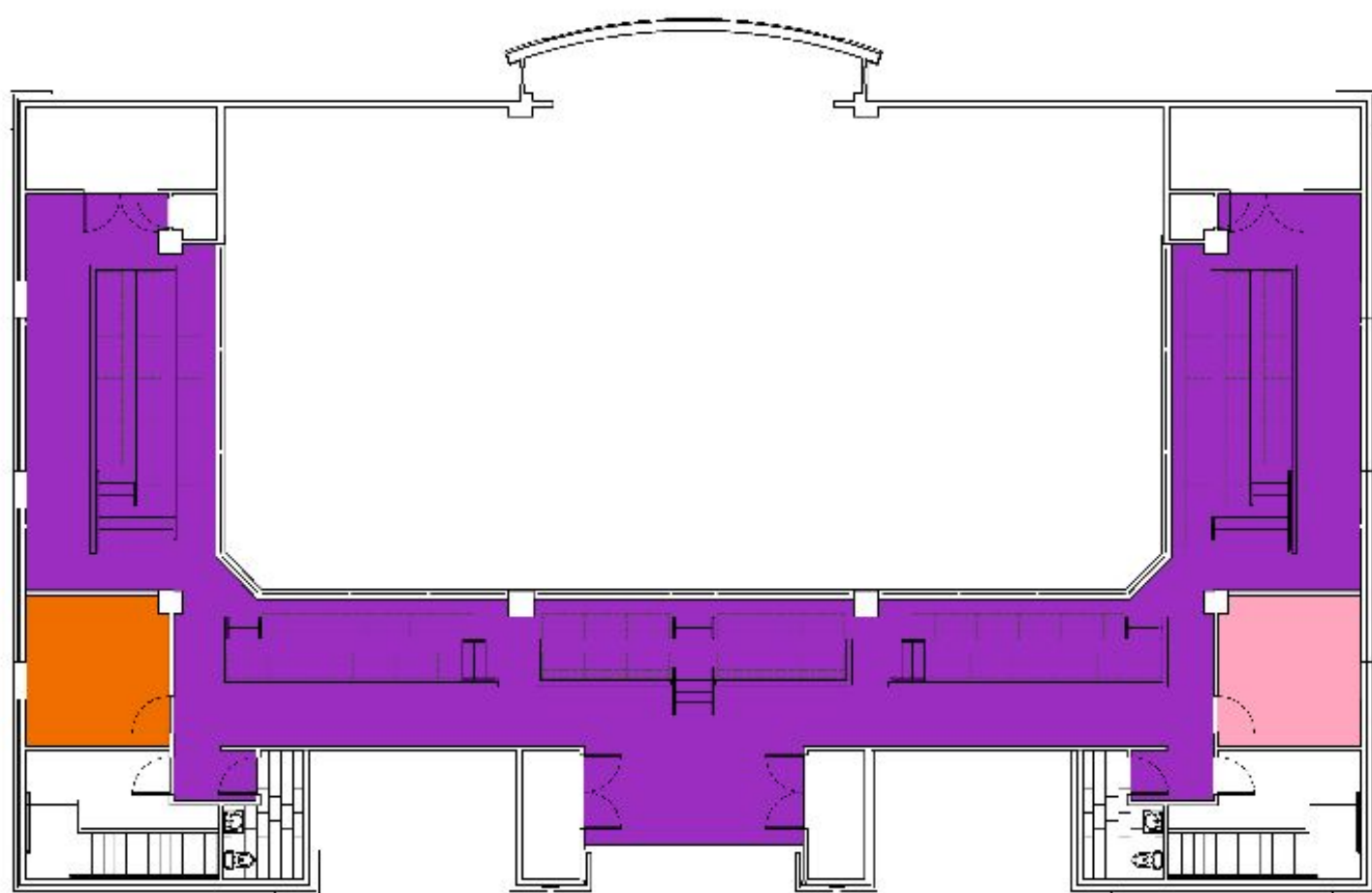












**B** SECOND FLOOR PLAN