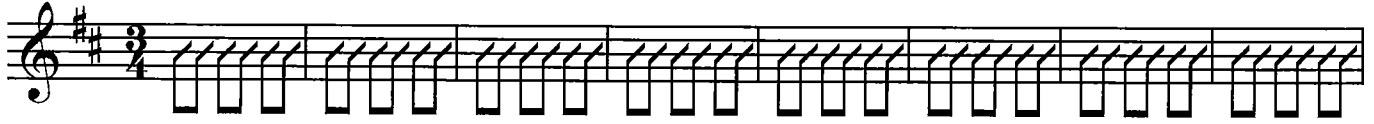


Come Thou Long Expected Jesus

Charles Wesley

♩ = 132

D B m7 G 2 A sus4 D B m7 G 2 A sus4 D



Verses 1 & 2

D B m7 G 2 A sus4 D B m7 G 2 A sus4



Come Thou long ex - pect - ed Je - sus, Born to set Thy peo - ple
Joy to those who long to see Thee Day - spring from on high ap

D D B m7 G 2 A sus4 D B m7



free; From our fears and sins re lease us: Let us find our
pear; Come Thou pro - mised Rod of Jes - se of Thy birth we

G 2 A sus4 D D G 2 D



rest in Thee. Is - rael's Strength and Con - so - la - tion, Hope of
long - to hear. O'er the hills the an gels sin - ging news, glad

B m7 A sus4 D A sus4/C# B m7 A sus4



all the earth Thou art; Dear De - sire - of ev - ery na - tion,
ti - dings of a birth; Go to Him your prai - ses rin - ging

G 2 D/F# Em7(add1) D D sus4



Joy of ev - ery long - ing heart.
Christ the Lord has come to earth.

Verses 3 & 4

44

D B m7 G 2 A sus4 D B m7 G 2 A sus4

Come to earth__ to taste our sad__ ness He whose glo ries knew no
 Born Thy peo__ ple to de li__ ver born a child and yet__ a

51

D D B m7 G 2 A sus4 D B m7

end; By His life__ He brings us glad ness Our Re deem er
 King; Born to reign__ in us for ev__ er Now Thy gra cious

58

G 2 A sus4 D D G 2 D

Shep__ herd Friend. Leav - ing rich__ es with - out num ber born with
 King__ dom bring. By Thine own e ter nal Spir it Rule in

65

B m7 A sus4 D A sus4/C# B m7 A sus4

in__ a cat__ tle stall; This the e__ ver last__ ing won der,
 all__ our hearts a lone; By__ Thine all__ suf fi__ cient mer__ it

72

G 2 D/F# Em7(add11) D D sus4

Christ was born__ the Lord of all.
 Raise us to__ Thy glor__ ious throne.

79

D D sus4 D