

# Psalm 150 (Praise the Lord)

Key: G - A $\flat$

(based on the recording from the Keith and Kristyn Getty/Matt Boswell/Matt Papa single "Psalm 150 (Praise the Lord)")  
www.praisecharts.com/75351

Matt Boswell & Matt Papa

Arr. by Grant Wall

Orch. by Dan Galbraith

$\text{♩} = 77$

G



*mp* Piano lead (cues)  
Pads/Bass diamonds, Sn. cadence

1 Verse

*Pads/Bass/Sn. sim.*  
*Piano simplify*



1. You made the star - ry host; You traced the moun - tain peaks. You  
*Octaves*



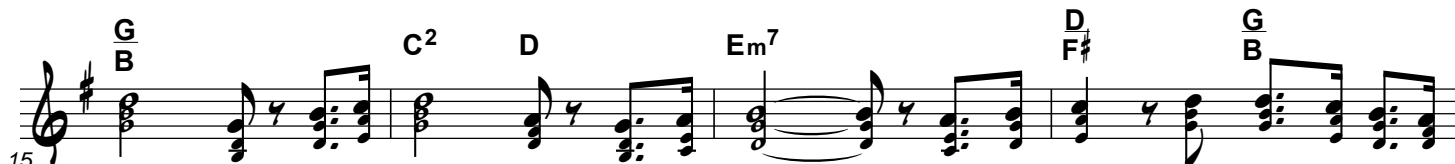
paint the ev - 'ning skies with won - ders. The earth, it is Your throne from des - ert to the sea. All

2 Chorus

*mp - mf*  
1X - Band sim. (Sn. cadence)  
2X - Band in groove



na - ture tes - ti - fies Your splen - dor. Praise the Lord, praise the Lord; Sing His



great - ness all cre - a - tion. Praise the Lord. Raise your voice, you heights and all you



depths from furth - est east to west. Let ev - 'ry - thing that has breath praise the Lord.

+Bass

3 Verse

22 *G* *Gsus* *Drum fill* *m $\sharp$*  *G* *Band in groove* *G $\supset$ <sub>2</sub>*

2. You reached in-to the dust; with love Your Spi-rit breathed. You

26 *G* *G/B* *C* *G* *G*

formed us in Your ver - y like - ness. To know Your won - drous works, to

29 *G $\supset$ <sub>2</sub>* *D* *F $\sharp$*  *Em $^7$*  *G* *B* *C* *D* *D.S. al Coda*

tell Your might - y deeds, to join the ev - er-last - ing chor - - us. Praise the

Coda

32 *Am $^7$*  *D* *Em $^7$*  *m $\sharp$*  *C $^2$*  *Bm* *D*

has breath praise the Lord.

35 *Em $^7$*  *G/B* *C $^2$*  *Sus. Cym.* *m $\sharp$*  *4 Verse* *A $\flat$*

3. Let sym - pho-nies re - sound; let

38 *A $\flat$ sus* *A $\flat$*  *D $\flat$*  *A $\flat$*  *A $\flat$*

drums and choirs ring out. All heav-en hear the sound of wor - ship. Let ev-'ry na-tion bring its

42 *A $\flat$ sus* *E $\flat$*  *G* *Fm $^7$*  *A $\flat$*  *C* *D $\flat$*  *E $\flat$*

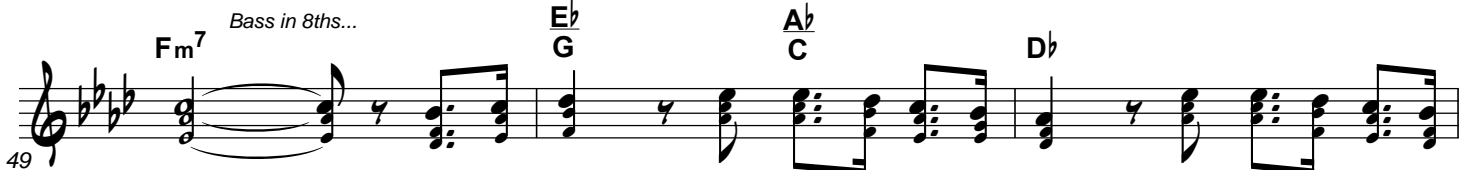
hon - ors to the King: a roar of har - mo-nies, e - ter - - - nal. Praise the

5 Chorus


Band in 4's...


45  *Band in 4's...*  
Lord, praise the Lord; Sing His great - ness all cre - a - tion. Praise the

Bass in 8ths...

49  *Bass in 8ths...*  
Lord. Raise your voice, you heights and all you depths from furth - est east to

Kick in 8ths...

52  *Kick in 8ths...*  
west. You dis - tant burn - ing stars, all crea - tures near and far, from sky to sea to

55  *Drum fill* *Rit.*  
shore, sing out for-ev - er - more. Let ev - 'ry-thing that has breath praise the Lord.

Piano-Vocal  
(SATB)

# Psalm 150 (Praise the Lord)

Key: G - A $\flat$

(based on the recording from the Keith and Kristyn Getty/Matt Boswell/Matt Papa single "Psalm 150 (Praise the Lord)")  
www.praisecharts.com/75351

Matt Boswell & Matt Papa

Arr. by Grant Wall

Orch. by Dan Galbraith

$\text{♩} = 77$

G

1 Verse

Octaves

1. You made the star-ry host; You

3

traced the moun - tain peaks. You paint the ev - 'ning skies with won - ders. The

6

G<sup>4</sup> G C<sup>2</sup> G

9

earth, it is Your throne from des - ert to the sea. All na - ture tes - ti - fies Your

G G<sup>4</sup> Em<sup>7</sup> G/B

Detailed description: This system contains measures 9, 10, and 11. The vocal line features a melody with eighth and quarter notes. The piano accompaniment consists of chords and moving lines in both hands. Chord symbols G, G<sup>4</sup>, Em<sup>7</sup>, and G/B are placed above the piano staff.

12

ALL: *mf* Mel. in Ten. 2 Chorus  $\frac{3}{4}$

splen - dor. Praise the Lord, praise the Lord; Sing His

C D G Am<sup>7</sup>

*mf-m<sup>z</sup>*  
2X - play L.H. cues

Detailed description: This system contains measures 12, 13, and 14. It begins with a section for 'ALL: Mel. in Ten.' marked 'mf' and '2 Chorus' with a 3/4 time signature. The vocal line has a melodic line with some notes held over. The piano accompaniment includes chords and a repeated bass line in the left hand. Chord symbols C, D, G, and Am<sup>7</sup> are shown. A performance instruction '2X - play L.H. cues' is written in the piano staff.

15

great - - - ness all cre - a - - - tion. Praise the Lord. Raise your

G/B C<sup>2</sup> D Em<sup>7</sup>

Detailed description: This system contains measures 15, 16, and 17. The vocal line continues the melody. The piano accompaniment features chords and a repeated bass line. Chord symbols G/B, C<sup>2</sup>, D, and Em<sup>7</sup> are placed above the piano staff.

2nd X to Coda

voice, you heights and all you depths from furth - est east to west. Let ev - 'ry-thing that

18

D F# G B C G B

Detailed description: This system contains measures 18, 19, and 20. It features a vocal line with lyrics, a piano accompaniment, and a guitar chord chart. The lyrics are: "voice, you heights and all you depths from furth - est east to west. Let ev - 'ry-thing that". The guitar chords are D, F#, G, B, C, G, B.

has breath praise the Lord. 2. You

21

Am<sup>7</sup> D G Gsus

Detailed description: This system contains measures 21, 22, and 23. It features a vocal line with lyrics, a piano accompaniment, and a guitar chord chart. The lyrics are: "has breath praise the Lord. 2. You". The guitar chords are Am<sup>7</sup>, D, G, Gsus.

3 Verse

reached in - to the dust; with love Your Spi - rit breathed. You formed us in Your ver - y

24

G G<sup>4</sup> G B

Detailed description: This system contains measures 24, 25, and 26. It features a vocal line with lyrics, a piano accompaniment, and a guitar chord chart. The lyrics are: "reached in - to the dust; with love Your Spi - rit breathed. You formed us in Your ver - y". The guitar chords are G, G<sup>4</sup>, G, B.

like - ness. To know Your won - drous works, to tell Your might - y deeds, to

C G G G<sup>4</sup> D  
F $\sharp$

27

D.S. al Coda

This block contains the first system of music, measures 27-30. It features a vocal line with lyrics, a piano accompaniment, and a guitar part. The lyrics are: "like - ness. To know Your won - drous works, to tell Your might - y deeds, to". The guitar part includes chords C, G, G, G<sup>4</sup>, and D F $\sharp$ . Measure numbers 27, 30, and 32 are indicated. A "D.S. al Coda" instruction is present at the end of the system.

join the ev - er - last - ing chor - - - us. Praise the

Em<sup>7</sup> G B C D

30

Mel.

This block contains the second system of music, measures 30-32. The lyrics are: "join the ev - er - last - ing chor - - - us. Praise the". The guitar part includes chords Em<sup>7</sup>, G B, C, and D. Measure numbers 30 and 32 are indicated. The word "Mel." is written above the piano accompaniment.

has breath praise the Lord.

Am<sup>7</sup> D Em<sup>7</sup> C<sup>2</sup> Bm D Em<sup>7</sup> G B

32

This block contains the third system of music, measures 32-35. The lyrics are: "has breath praise the Lord.". The guitar part includes chords Am<sup>7</sup>, D, Em<sup>7</sup>, C<sup>2</sup>, Bm D, Em<sup>7</sup>, and G B. Measure numbers 32 and 35 are indicated.

4 Verse

3. Let sym - pho - nies re - sound; let drums and choirs ring out. All

Chords: C<sup>2</sup>, A $\flat$ , A $\flat$ sus

Measures 36-38: This system contains measures 36, 37, and 38. The vocal line begins with a rest in measure 36, followed by the lyrics. The piano accompaniment features a steady eighth-note accompaniment in the right hand and a bass line in the left hand. Chords are indicated above the piano staff.

heav - en hear the sound of wor - - ship. Let ev - 'ry na - tion bring its

Chords: A $\flat$ , D $\flat$ /A $\flat$ , A $\flat$ , A $\flat$

Measures 39-41: This system contains measures 39, 40, and 41. The vocal line continues with the lyrics. The piano accompaniment maintains the eighth-note accompaniment. Chords are indicated above the piano staff.

hon - ors to the King: a roar of har - mo - nies, e - ter - - nal. Praise the

Chords: A $\flat$ sus, E $\flat$ /G, Fm<sup>7</sup>, A $\flat$ /C, D $\flat$ , E $\flat$

Measures 42-44: This system contains measures 42, 43, and 44. The vocal line concludes with the lyrics. The piano accompaniment features a more active right hand in the final measure. Chords are indicated above the piano staff.



5 Chorus

45

Lord, praise the Lord; Sing His great - - - ness all cre-

A $\flat$  B $\flat$ m7 A $\flat$  C

This system contains measures 45, 46, and 47. It features a vocal line with lyrics, a bass line, and a piano accompaniment. The piano part includes a treble and bass clef with chords and a steady eighth-note accompaniment. Chord symbols A $\flat$ , B $\flat$ m7, A $\flat$ , and C are placed above the piano staff.

48

a - - - tion. Praise the Lord. Raise your voice, you heights and all you

D $\flat$ 2 E $\flat$  Fm7 E $\flat$  G A $\flat$  C

This system contains measures 48, 49, and 50. It features a vocal line with lyrics, a bass line, and a piano accompaniment. The piano part includes a treble and bass clef with chords and a steady eighth-note accompaniment. Chord symbols D $\flat$ 2, E $\flat$ , Fm7, E $\flat$  G, and A $\flat$  C are placed above the piano staff.

51

depths from furth - est east to west. You dis - tant burn - ing stars, all crea - tures near and

D $\flat$  A $\flat$  E $\flat$  D $\flat$  F

This system contains measures 51, 52, and 53. It features a vocal line with lyrics, a bass line, and a piano accompaniment. The piano part includes a treble and bass clef with chords and a steady eighth-note accompaniment. Chord symbols D $\flat$ , A $\flat$  E $\flat$ , and D $\flat$  F are placed above the piano staff.

54

far, from sky to sea to shore, sing out for - ev - er -

A $\flat$   
E $\flat$  B $\flat$ m<sup>7</sup>

Detailed description: This system contains measures 54 and 55. The vocal line (SATB) has lyrics: "far, from sky to sea to shore, sing out for - ev - er -". The piano accompaniment features a steady eighth-note bass line in the left hand and chords in the right hand. Chord changes are indicated as A $\flat$ /E $\flat$  and B $\flat$ m<sup>7</sup>.

56

more. Let ev - 'ry-thing that has breath praise the Lord.

A $\flat$   
C D $\flat$  Rit. E $\flat$  A $\flat$

Detailed description: This system contains measures 56 and 57. The vocal line has lyrics: "more. Let ev - 'ry-thing that has breath praise the Lord." The piano accompaniment continues with a steady eighth-note bass line. Chord changes are indicated as A $\flat$ /C, D $\flat$ , E $\flat$ , and A $\flat$ . A "Rit." (ritardando) marking is present above the vocal line and below the piano accompaniment.